

COMPREHENSIVE SERVICES

We offer competitive repair and calibration services, as well as easily accessible documentation and free downloadable resources.

SELL YOUR SURPLUS

We buy new, used, decommissioned, and surplus parts from every NI series. We work out the best solution to suit your individual needs.

 Sell For Cash  Get Credit  Receive a Trade-In Deal

OBSOLETE NI HARDWARE IN STOCK & READY TO SHIP

We stock **New, New Surplus, Refurbished, and Reconditioned** NI Hardware.



Bridging the gap between the manufacturer and your legacy test system.

 1-800-915-6216

 www.apexwaves.com

 sales@apexwaves.com

All trademarks, brands, and brand names are the property of their respective owners.

Request a Quote

 **CLICK HERE**

PCI-1408

IMAQ

Getting Started with Your IMAQ PCI-1408 and the NI-IMAQ Software for Mac OS

*High-Quality Monochrome Image Acquisition Board
for PCI*

June 1997 Edition
Part Number 321557A-01



Internet Support

support@natinst.com

E-mail: info@natinst.com

FTP Site: ftp.natinst.com

Web Address: <http://www.natinst.com>



Bulletin Board Support

BBS United States: (512) 794-5422

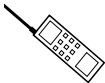
BBS United Kingdom: 01635 551422

BBS France: 01 48 65 15 59



Fax-on-Demand Support

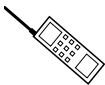
(512) 418-1111



Telephone Support (U.S.)

Tel: (512) 795-8248

Fax: (512) 794-5678



International Offices

Australia 03 9879 5166, Austria 0662 45 79 90 0, Belgium 02 757 00 20,
Canada (Ontario) 905 785 0085, Canada (Québec) 514 694 8521, Denmark 45 76 26 00,
Finland 09 725 725 11, France 01 48 14 24 24, Germany 089 741 31 30,
Hong Kong 2645 3186, Israel 03 5734815, Italy 02 413091, Japan 03 5472 2970,
Korea 02 596 7456, Mexico 5 520 2635, Netherlands 0348 433466, Norway 32 84 84 00,
Singapore 2265886, Spain 91 640 0085, Sweden 08 730 49 70, Switzerland 056 200 51 51,
Taiwan 02 377 1200, U.K. 01635 523545

National Instruments Corporate Headquarters

6504 Bridge Point Parkway Austin, TX 78730-5039 Tel: (512) 794-0100

Important Information

Warranty

The IMAQ PCI-1408 is warranted against defects in materials and workmanship for a period of one year from the date of shipment, as evidenced by receipts or other documentation. National Instruments will, at its option, repair or replace equipment that proves to be defective during the warranty period. This warranty includes parts and labor.

The media on which you receive National Instruments software are warranted not to fail to execute programming instructions, due to defects in materials and workmanship, for a period of 90 days from date of shipment, as evidenced by receipts or other documentation. National Instruments will, at its option, repair or replace software media that do not execute programming instructions if National Instruments receives notice of such defects during the warranty period. National Instruments does not warrant that the operation of the software shall be uninterrupted or error free.

A Return Material Authorization (RMA) number must be obtained from the factory and clearly marked on the outside of the package before any equipment will be accepted for warranty work. National Instruments will pay the shipping costs of returning to the owner parts which are covered by warranty.

National Instruments believes that the information in this manual is accurate. The document has been carefully reviewed for technical accuracy. In the event that technical or typographical errors exist, National Instruments reserves the right to make changes to subsequent editions of this document without prior notice to holders of this edition. The reader should consult National Instruments if errors are suspected. In no event shall National Instruments be liable for any damages arising out of or related to this document or the information contained in it.

EXCEPT AS SPECIFIED HEREIN, NATIONAL INSTRUMENTS MAKES NO WARRANTIES, EXPRESS OR IMPLIED, AND SPECIFICALLY DISCLAIMS ANY WARRANTY OF MERCHANTABILITY OR FITNESS FOR A PARTICULAR PURPOSE. CUSTOMER'S RIGHT TO RECOVER DAMAGES CAUSED BY FAULT OR NEGLIGENCE ON THE PART OF NATIONAL INSTRUMENTS SHALL BE LIMITED TO THE AMOUNT THEREOF PAID BY THE CUSTOMER. NATIONAL INSTRUMENTS WILL NOT BE LIABLE FOR DAMAGES RESULTING FROM LOSS OF DATA, PROFITS, USE OF PRODUCTS, OR INCIDENTAL OR CONSEQUENTIAL DAMAGES, EVEN IF ADVISED OF THE POSSIBILITY THEREOF. This limitation of the liability of National Instruments will apply regardless of the form of action, whether in contract or tort, including negligence. Any action against National Instruments must be brought within one year after the cause of action accrues. National Instruments shall not be liable for any delay in performance due to causes beyond its reasonable control. The warranty provided herein does not cover damages, defects, malfunctions, or service failures caused by owner's failure to follow the National Instruments installation, operation, or maintenance instructions; owner's modification of the product; owner's abuse, misuse, or negligent acts; and power failure or surges, fire, flood, accident, actions of third parties, or other events outside reasonable control.

Copyright

Under the copyright laws, this publication may not be reproduced or transmitted in any form, electronic or mechanical, including photocopying, recording, storing in an information retrieval system, or translating, in whole or in part, without the prior written consent of National Instruments Corporation.

Trademarks

LabVIEW®, RTSI®, IMAQ™, and MITE™ are trademarks of National Instruments Corporation. Product and company names listed are trademarks or trade names of their respective companies.

WARNING REGARDING MEDICAL AND CLINICAL USE OF NATIONAL INSTRUMENTS PRODUCTS

National Instruments products are not designed with components and testing intended to ensure a level of reliability suitable for use in treatment and diagnosis of humans. Applications of National Instruments products involving medical or clinical treatment can create a potential for accidental injury caused by product failure, or by errors on the part of the user or application designer. Any use or application of National Instruments products for or involving medical or clinical treatment must be performed by properly trained and qualified medical personnel, and all traditional medical safeguards, equipment, and procedures that are appropriate in the particular situation to prevent serious injury or death should always continue to be used when National Instruments products are being used. National Instruments products are NOT intended to be a substitute for any form of established process, procedure, or equipment used to monitor or safeguard human health and safety in medical or clinical treatment.

FCC/DOC Radio Frequency Interference Class A Compliance

This equipment generates and uses radio frequency energy and, if not installed and used in strict accordance with the instructions in this manual, may cause interference to radio and television reception. Classification requirements are the same for the Federal Communications Commission (FCC) and the Canadian Department of Communications (DOC). This equipment has been tested and found to comply with the following two regulatory agencies:

Federal Communications Commission

This equipment has been tested and found to comply with the limits for a Class A digital device, pursuant to part 15 of the FCC Rules. These limits are designed to provide reasonable protection against harmful interference when the equipment is operated in a commercial environment. This equipment generates, uses, and can radiate radio frequency energy and, if not installed and used in accordance with the instruction manual, may cause harmful interference to radio communications. Operation of this equipment in a residential area is likely to cause harmful interference in which case the user will be required to correct the interference at his own expense.

Notices to User: *Changes or modifications not expressly approved by National Instruments could void the user's authority to operate the equipment under the FCC Rules.*

This device complies with the FCC rules only if used with shielded interface cables of suitable quality and construction. National Instruments used such cables to test this device and provides them for sale to the user. The use of inferior or nonshielded interface cables could void the user's authority to operate the equipment under the FCC rules.

If necessary, consult National Instruments or an experienced radio/television technician for additional suggestions. The following booklet prepared by the FCC may also be helpful: *Interference to Home Electronic Entertainment Equipment Handbook*. This booklet is available from the U.S. Government Printing Office, Washington, DC 20402.

Canadian Department of Communications

This Class A digital apparatus meets all requirements of the Canadian Interference-Causing Equipment Regulations.

Cet appareil numérique de la classe A respecte toutes les exigences du Règlement sur le matériel brouilleur du Canada.



*Table
of
Contents*

About This Manual

Organization of This Manual	ix
Conventions Used in This Manual	x
National Instruments Documentation	xi
Related Documentation	xi
Customer Communication	xi

Chapter 1

Introduction

About the PCI-1408	1-1
What You Need to Get Started	1-2
Software Programming Choices	1-3
National Instruments Application Software	1-3
NI-IMAQ Driver Software	1-4
Optional Equipment	1-5
Unpacking	1-6
How to Set up Your IMAQ System	1-6

Chapter 2

Configuration and Installation

Board Configuration	2-1
VIDEO0 Input Mode	2-2
External CLK and Synchronization Input Mode	2-3
Switch S1	2-4
Installation	2-4

Chapter 3

Hardware Overview

Functional Overview	3-1
Video Mux	3-2
Antichrominance Filter	3-2
Programmable Gain and Offset	3-2
8-Bit ADC and LUT	3-3

CSYNC Mux.....	3-3
Genlock and Synchronization Circuitry.....	3-3
VCO and PLL Circuitry.....	3-3
Pixel Aspect Ratio Circuitry.....	3-3
PCLK, HSYNC, VSYNC Mux.....	3-4
RTSI Bus.....	3-4
Trigger Control and Mapping Circuitry.....	3-4
Acquisition and Region-of-Interest Control.....	3-4
FIFO Buffer.....	3-4
Scatter-Gather DMA Controllers.....	3-5
SRAM.....	3-5
PCI Interface.....	3-5
Board Configuration NVRAM.....	3-5
Video Acquisition.....	3-6
Start/Stop Conditions.....	3-6
Acquisition Window Control.....	3-6
Programming Video Parameters.....	3-8
Acquisition Modes.....	3-10

Chapter 4

Signal Connections

BNC Connector.....	4-1
I/O Connector.....	4-1
I/O Connector Signal Connection Descriptions.....	4-2

Chapter 5

Configuration Utility

Introduction.....	5-1
Using IMAQconf.....	5-1
Menu Bar.....	5-2
File Menu.....	5-2
Edit Menu.....	5-2
Scaling Menu.....	5-3
AutoSnap Menu.....	5-4
Display Menu.....	5-4
Interface Panel.....	5-5
Camera Type Panel.....	5-6
Basic Settings Panel.....	5-7
Camera Acquisition Panel.....	5-9
Advanced Panel (1).....	5-10
Advanced Panel (2).....	5-12

Advanced Panel (3)	5-13
Operating Mode Panel.....	5-15
Hardware Lookup Table Panel.....	5-17
Video Sequence Recording Panel	5-22
Saving Your Configuration.....	5-24
Testing Your Configuration.....	5-24
Image Storage	5-25

Appendix A Specifications

Appendix B Custom Cables

Appendix C Customer Communication

Glossary

Index

Figures

Figure 1-1. The Relationship between the Programming Environment, NI-IMAQ, and Your Hardware	1-5
Figure 1-2. How to Set up Your IMAQ System.....	1-7
Figure 2-1. Parts Locator Diagram	2-2
Figure 2-2. Configuring VIDEO0 with Jumper W1	2-3
Figure 2-3. Configuring PCLK, VSYNC, HSYNC, and CSYNC with Jumper W3	2-3
Figure 2-4. Switch S1	2-4
Figure 3-1. PCI-1408 Block Diagram	3-2
Figure 3-2. Video Line	3-7
Figure 3-3. Video Field	3-8
Figure 4-1. BNC Connector Pin Assignment	4-1
Figure 4-2. I/O Connector Pin Assignments	4-2

Figure 5-1.	File Menu	5-2
Figure 5-2.	Edit Menu	5-3
Figure 5-3.	Scaling Menu	5-3
Figure 5-4.	Autosnap Menu	5-4
Figure 5-5.	Display Menu	5-4
Figure 5-6.	Interface Panel Settings	5-5
Figure 5-7.	Camera Type Panel Settings.....	5-6
Figure 5-8.	Basic Settings Panel	5-8
Figure 5-9.	Camera Acquisition Panel Settings	5-10
Figure 5-10.	Advanced Panel (1)	5-11
Figure 5-11.	Advanced Panel (2)	5-12
Figure 5-12.	Advanced Panel (3)	5-14
Figure 5-13.	Operating Mode Panel Settings	5-15
Figure 5-14.	Hardware Lookup Table Panel.....	5-18
Figure 5-15.	Normal LUT	5-19
Figure 5-16.	Inverse LUT	5-19
Figure 5-17.	Log LUT.....	5-20
Figure 5-18.	Exponential LUT	5-20
Figure 5-19.	Binary LUT	5-21
Figure 5-20.	Inverse Binary LUT.....	5-22
Figure 5-21.	Video Sequence Recording Panel	5-23
Figure B-1.	25-Pin DSUB Receptacle	B-1

Tables

Table 4-1.	I/O Connector Signals	4-2
------------	-----------------------------	-----

Getting Started with Your IMAQ PCI-1408 and the NI-IMAQ Software for Mac OS describes the features, functions, and operation of the PCI-1408. The PCI-1408 is a high-accuracy, monochrome PCI image acquisition (IMAQ) board that supports RS-170, CCIR, NTSC, and PAL video standards from any of four inputs. *Getting Started with Your IMAQ PCI-1408 and the NI-IMAQ Software for Mac OS* is intended for users with a basic knowledge of image acquisition.

Organization of This Manual

Getting Started with Your IMAQ PCI-1408 and the NI-IMAQ Software for Mac OS is organized as follows:

- Chapter 1, *Introduction*, describes the PCI-1408; lists what you need to get started; describes software programming choices, optional equipment, and custom cables; and explains how to unpack and set up the PCI-1408.
- Chapter 2, *Configuration and Installation*, explains how to configure and install your PCI-1408 board.
- Chapter 3, *Hardware Overview*, presents an overview of the hardware functions on your PCI-1408 board and explains the operation of each functional unit making up the PCI-1408.
- Chapter 4, *Signal Connections*, describes cable connections for the PCI-1408.
- Chapter 5, *Configuration Utility*, describes the basic functions of IMAQCONF, the configuration and diagnostic utility included with the PCI-1408.
- Appendix A, *Specifications*, lists the specifications of the PCI-1408.
- Appendix B, *Custom Cables*, lists specifications for building custom cabling for your PCI-1408.
- Appendix C, *Customer Communication*, contains forms you can use to request help from National Instruments or to comment on our products and manuals.

- The *Glossary* contains an alphabetical list and description of terms used in this manual, including abbreviations, acronyms, metric prefixes, mnemonics, and symbols.
- The *Index* contains an alphabetical list of key terms and topics in this manual, including the page where you can find each one.

Conventions Used in This Manual

The following conventions are used in this manual:

- < > Angle brackets containing numbers separated by an ellipses represent a range of values associated with a bit or signal name (for example, ACH<0..7>).
- A hyphen between two or more key names enclosed in angle brackets denotes that you should simultaneously press the named keys—for example, <Control–Alt–Delete>.
- » The » symbol leads you through nested menu items and dialog box options to a final action. The sequence
File»Page Setup»Options»Substitute Fonts
directs you to pull down the **File** menu, select the **Page Setup** item, select **Options**, and finally select the **Substitute Fonts** options from the last dialog box.
- bold** Bold text denotes menus, menu items, or dialog box buttons or options.
- italic* Italic text denotes emphasis, a cross reference, or an introduction to a key concept. This font also denotes text for which you supply the appropriate word or value, such as in Windows 3.x.
- bold italic*** Bold italic text denotes a note, caution, or warning.
- monospace Lowercase text in this font denotes text or characters that are to be literally input from the keyboard, sections of code, programming examples, and syntax examples. This font is also used for the proper names of disk drives, paths, directories, programs, subprograms, subroutines, device names, functions, variables, filenames and extensions, and for statements and comments taken from programs.
- Abbreviations, acronyms, metric prefixes, mnemonics, symbols, and terms are listed in the *Glossary*.

National Instruments Documentation

Getting Started with Your IMAQ PCI-1408 and the NI-IMAQ Software for Mac OS is one piece of the documentation set for your image acquisition system. You could have any of several types of manuals, depending on the hardware and software in your system. Use the different types of manuals you have as follows:

- Software documentation—You may have both application software and NI-IMAQ software documentation. National Instruments application software includes LabVIEW. After you set up your hardware system, use either the application software (LabVIEW) documentation or the NI-IMAQ documentation to help you write your application. If you have a large and complicated system, it is worthwhile to look through the software documentation before you configure your hardware.
- Accessory installation guides or manuals—If you are using accessory products, read the terminal block and cable assembly installation guides or accessory board user manuals. They explain how to physically connect the relevant pieces of the system. Consult these guides when you are making your connections.

Related Documentation

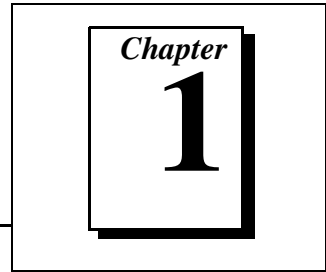
The following document contains information that you may find helpful as you read this manual:

- Your computer technical reference manual

Customer Communication

National Instruments wants to receive your comments on our products and manuals. We are interested in the applications you develop with our products, and we want to help if you have problems with them. To make it easy for you to contact us, this manual contains comment and configuration forms for you to complete. These forms are in Appendix C, *Customer Communication*, at the end of this manual.

Introduction



This chapter describes the PCI-1408; lists what you need to get started; describes software programming choices, optional equipment, and custom cables; and explains how to unpack and set up the PCI-1408.

About the PCI-1408

The PCI-1408 is a high-accuracy, monochrome, PCI-based IMAQ board that supports RS-170, CCIR, NTSC, and PAL video standards from any of four input sources. The board features an 8-bit flash analog-to-digital converter (ADC) that converts video signals to digital formats. The PCI-1408 acquires frames in real time and transfers them directly to system memory.

The PCI-1408 is simple to configure and is factory calibrated so that you can easily install the board and begin your image acquisition. The PCI-1408 ships with NI-IMAQ, the National Instruments complete IMAQ driver software you can use to directly control the PCI-1408. Using NI-IMAQ, you can quickly and easily start your application without having to program the board at the register level.

Featuring low cost and high accuracy, the PCI-1408 is ideal for both industrial and scientific environments. As a standalone board, the PCI-1408 supports four video sources and four external I/O lines that you can use as triggers or digital I/O lines. If you require more advanced triggering or additional I/O lines (either digital or analog), you can use the PCI-1408 and NI-IMAQ with the National Instruments data acquisition (DAQ) product line.

A common problem with image acquisition boards is that you cannot easily synchronize several functions to a common trigger or timing event. The PCI-1408 uses its Real-Time System Integration (RTSI) bus to solve this problem. The RTSI bus consists of the National Instruments RTSI bus interface and ribbon cable to route additional timing and trigger signals between the PCI-1408 and up to four National Instruments DAQ boards in your computer. The RTSI bus can even synchronize multiple PCI-1408 image captures.

Detailed specifications of the PCI-1408 are in Appendix A, *Specifications*.

What You Need to Get Started

To set up and use your PCI-1408, you will need the following:

- PCI-1408
- NI-IMAQ for Mac OS Release Notes*
- Getting Started with Your IMAQ PCI-1408 and the NI-IMAQ Software for Mac OS*
- NI-IMAQ for Mac OS and online documentation
- Optional software packages and documentation:
 - LabVIEW
 - IMAQ Vision for G
- IMAQ BNC-1 shielded, 75 Ω BNC cable for VIDEO0 (included with the PCI-1408)
- IMAQ A2504-1 video cable (optional—for trigger and additional camera support)
- IMAQ A2514-1 video cable (optional—for complete trigger, additional camera, and external synchronization support)
- BNC-to-RCA adapter (included with the PCI-1408)
- Your PowerPC-based PCI computer running Mac OS version 7.0 or later
- A video camera or other video source

Software Programming Choices

You have several options to choose from when programming your National Instruments IMAQ hardware. You can use National Instruments application software such as LabVIEW, National Instruments image analysis software such as IMAQ Vision, or the NI-IMAQ driver software.

National Instruments Application Software

LabVIEW features interactive graphics, a state-of-the-art user interface, and a powerful graphical programming language. The LabVIEW IMAQ VI Library, a series of virtual instruments (VIs) for using LabVIEW with the PCI-1408, is included with the NI-IMAQ software kit. The LabVIEW IMAQ VI Library is functionally equivalent to the NI-IMAQ software.

IMAQ Vision for G is an image acquisition, processing, and analysis library that consists of more than 400 VIs for using the PCI-1408 with LabVIEW. You can use IMAQ Vision for G functions directly or in combination for unique image processing. There are two versions of IMAQ Vision for G. The Base version gives you the ability to acquire, display, manipulate, and store images. The Advanced version is a complete set of functions for image analysis, processing, and interpretation. Using IMAQ Vision for G, an imaging novice or expert can perform graphical programming of the most basic or complicated image applications without knowledge of any algorithm implementations.

NI-IMAQ Driver Software

The NI-IMAQ driver software is included at no charge with the PCI-1408. NI-IMAQ has an extensive library of functions that you can call from your application programming environment. These functions include routines for video configuration, image acquisition (continuous and single-shot), memory buffer allocation, trigger control, and board configuration. The NI-IMAQ driver software performs all functions required for acquiring and saving images. The NI-IMAQ software does not perform any image analysis. For image analysis functionality, refer to the *National Instruments Application Software* section earlier in this chapter.

NI-IMAQ has both high-level and low-level functions for maximum flexibility and performance. Examples of high-level functions include the functions to acquire images in single-shot or continuous mode. An example of a low-level function, which requires advanced understanding of the PCI-1408 and image acquisition, is configuring an image sequence.

NI-IMAQ also internally resolves many of the complex issues between the computer and the PCI-1408, such as programming interrupts and DMA controllers. NI-IMAQ is the interface path between LabVIEW or a conventional programming environment and the PCI-1408.

Any platform that supports NI-IMAQ also supports NI-DAQ and a variety of National Instruments DAQ boards, so your PCI-1408 and NI-IMAQ development can integrate with National Instruments DAQ products.

Whether you are using conventional programming languages or National Instruments software, your application uses the NI-IMAQ driver software, as illustrated in Figure 1-1.

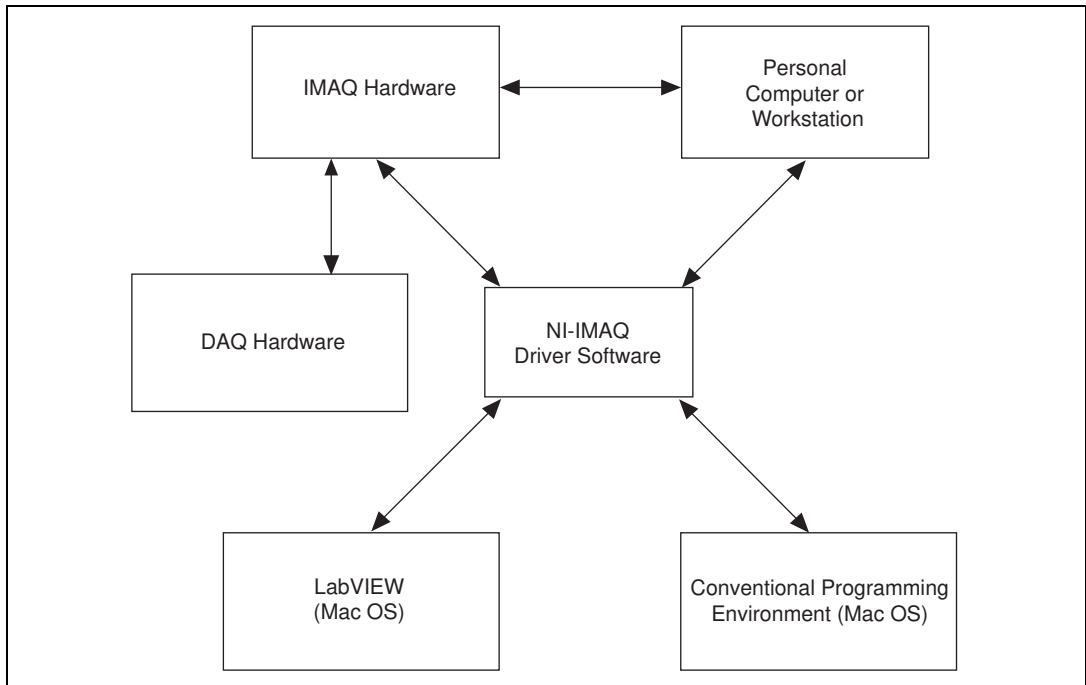


Figure 1-1. The Relationship between the Programming Environment, NI-IMAQ, and Your Hardware

Optional Equipment

National Instruments offers a variety of products for use with your PCI-1408 board, including cables and other National Instruments products:

- A four-pod BNC cable, which routes video and trigger signals to a BNC connector block (IMAQ A2504-1)
- A 14-pod BNC cable, which routes all video, trigger, and synchronization signals to a BNC connector block (IMAQ A2514-1)

- RTSI bus cables, for connecting the PCI-1408 to other DAQ hardware
- Other National Instruments DAQ devices for enhanced triggering, timing, or input/output

For more specific information about these products, refer to your National Instruments catalogue or call the office nearest you.

Unpacking

Your PCI-1408 board is shipped in an antistatic package to prevent electrostatic damage to the board. Electrostatic discharge can damage several components on the board. To avoid such damage in handling the board, take the following precautions:

- Ground yourself via a grounding strap or by holding a grounded object.
- Touch the antistatic package to a metal part of your computer chassis before removing the board from the package.
- Remove the board from the package and inspect the board for loose components or any other signs of damage. Notify National Instruments if the board appears damaged in any way. *Do NOT* install a damaged board in your computer.
- *Never* touch the exposed pins of connectors.

How to Set up Your IMAQ System

Use Figure 1-2 to install your hardware and software, configure your hardware, and begin using NI-IMAQ in your application programs.

If you will be accessing the NI-IMAQ device drivers through LabVIEW, you should read the NI-IMAQ release notes and *NI-IMAQ VIs for G Reference Manual* to help you get started.

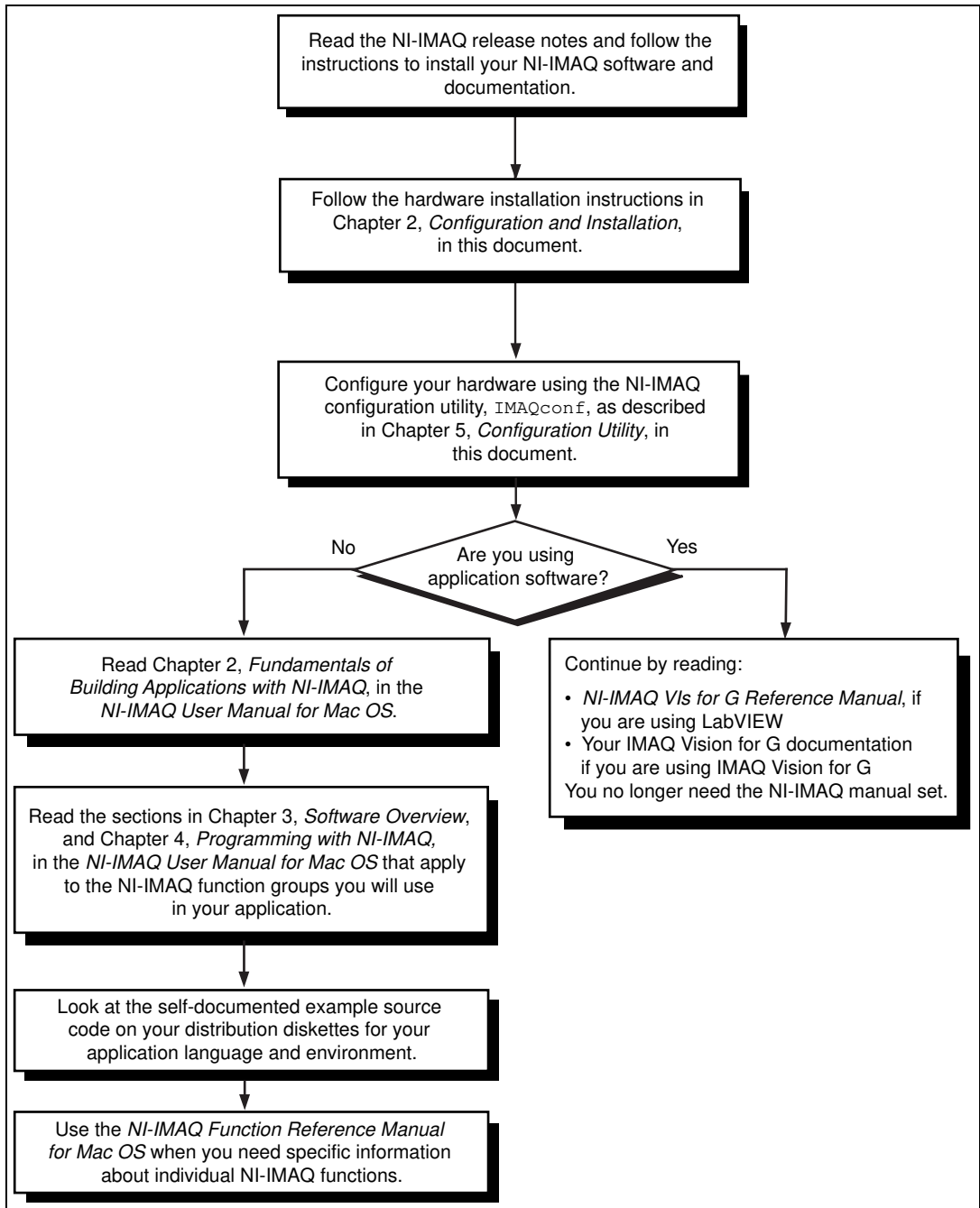
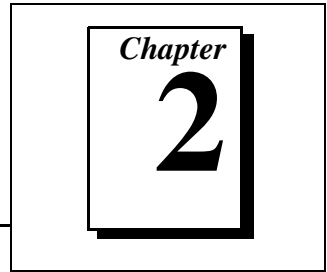


Figure 1-2. How to Set up Your IMAQ System

Configuration and Installation



This chapter explains how to configure and install your PCI-1408 board.

Board Configuration

This section describes how to configure the following options on the PCI-1408 board:

- VIDEO0 input mode
- External CLK and synchronization input mode

All other configuration options are software configurable.

Figure 2-1 shows the location of user-configurable jumpers and switches as well as factory-default settings on the PCI-1408.

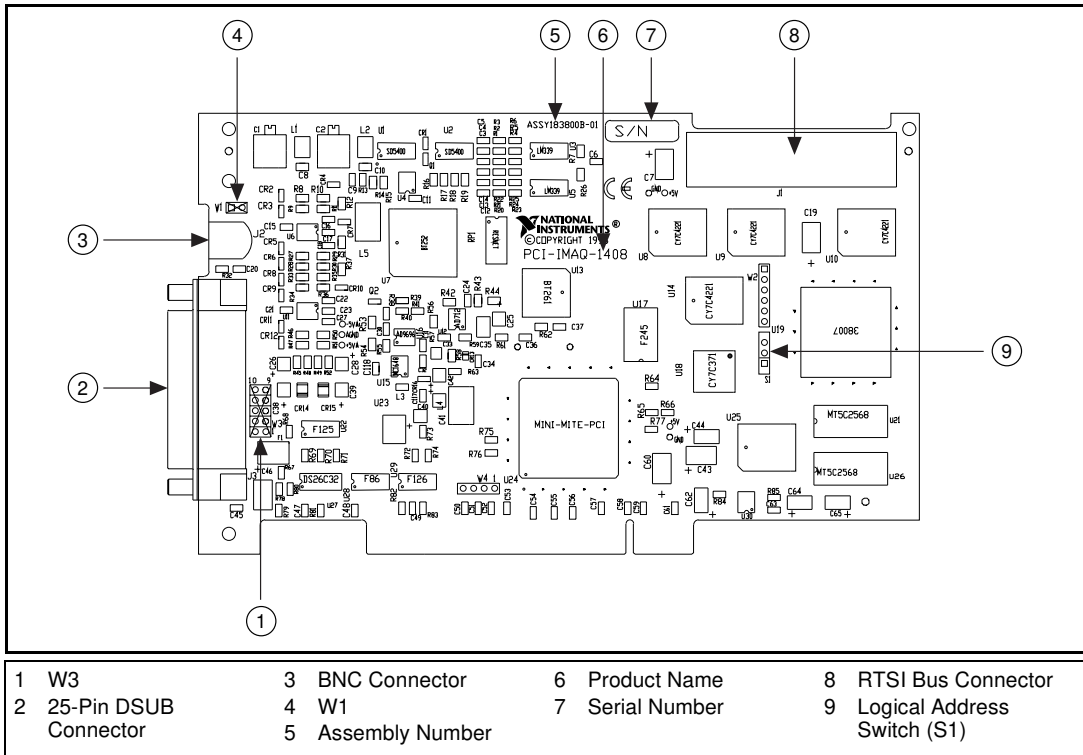


Figure 2-1. Parts Locator Diagram

VIDEO0 Input Mode

VIDEO0 has two different input sources via a BNC connector or a 25-pin DSUB port and two different input modes—referenced single-ended (RSE) and differential (DIFF) input. When you use the BNC input for VIDEO0, set the input mode to RSE (W1 populated). When you use the 25-pin DSUB port for VIDEO0, set the input mode for either RSE or DIFF.

When in RSE mode, the video input uses one analog input line, which connects to the video multiplexer circuitry. The negative input to the video multiplexer is tied internally to analog ground. When in DIFF mode, the video input uses two analog input signals. One signal connects to the positive input of the video multiplexer circuitry while the other input signal connects to the negative input of the video multiplexer circuitry. Jumper W1 controls the input mode selection, as

shown in Figure 2-2. Unpopulating W1 configures VIDEO0 for DIFF mode. Populating W1 configures VIDEO0 for RSE mode.

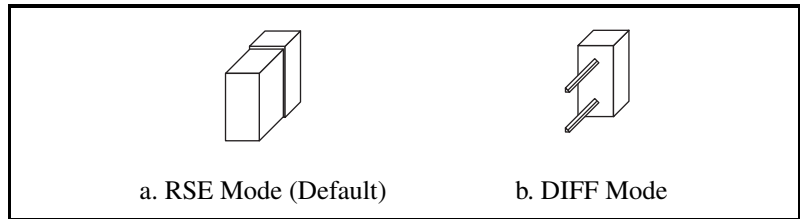


Figure 2-2. Configuring VIDEO0 with Jumper W1

External CLK and Synchronization Input Mode

The external PCLK, VSYNC, HSYNC, and CSYNC signals have two different input modes—RSE (TTL) and DIFF (RS-422) input. With RSE, the input uses one analog input line, which connects to the synchronization selection circuitry. The negative input to this circuitry is tied internally to analog ground. For RSE mode, populate all five sets of jumpers on W3, as shown in Figure 2-3. With DIFF mode, the input uses two analog input signals. One signal connects to the positive input of the synchronization selection circuitry while the other input connects to the negative input of the synchronization selection circuitry.

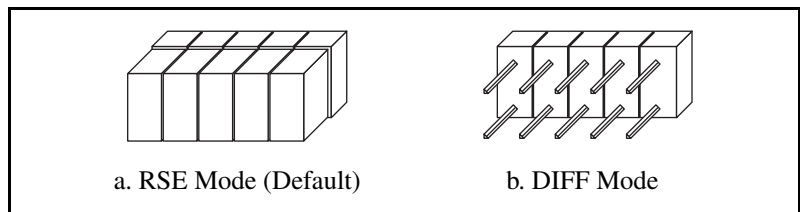


Figure 2-3. Configuring PCLK, VSYNC, HSYNC, and CSYNC with Jumper W3

Switch S1

Switch S1 is unused and should always be in the ON position, as shown in Figure 2-4.

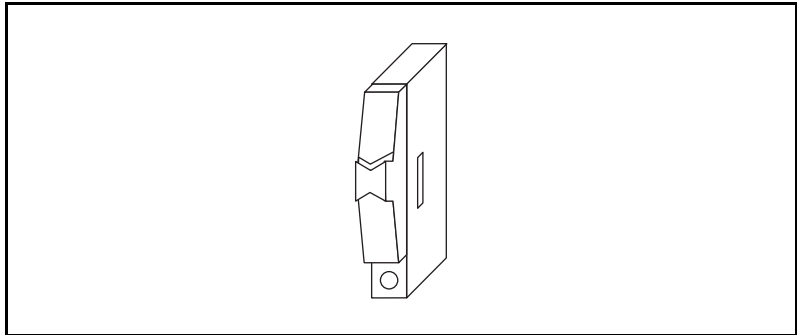


Figure 2-4. Switch S1

Installation

You can install the PCI-1408 board in any available PCI expansion slot in your computer. However, to achieve the best noise performance, you should leave as much room as possible between the PCI-1408 board and other boards and hardware.

The following are general instructions, but consult your computer user manual or technical reference manual for specific instructions and warnings.

1. Plug in but *do not* turn on your computer before installing the PCI-1408. The power cord grounds the computer and protects it from electrical damage while you are installing the module.



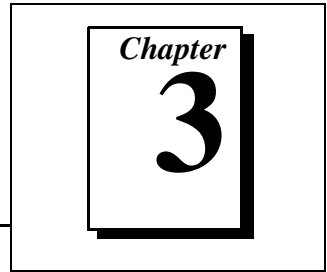
Warning: *To protect both yourself and the computer from electrical hazards, the computer should remain off until you finish installing the PCI-1408 module.*

2. Remove the top cover or access port to the PCI bus.
3. Select any available PCI expansion slot.
4. Touch the metal part of the power supply case inside the computer to discharge any static electricity that might be on your clothes or body.

5. Line up the PCI-1408 with the 25-pin DSUB and BNC connectors near the cut-out on the back panel. Slowly push down on the top of the PCI-1408 until its card-edge connector is resting on the expansion slot receptacle. Using slow, evenly distributed pressure, press the PCI-1408 straight down until it seats in the expansion slot.
6. Check the installation.
7. Replace the computer cover.

Your PCI-1408 is now installed.

Hardware Overview



This chapter presents an overview of the hardware functions on your PCI-1408 board and explains the operation of each functional unit making up the PCI-1408.

Functional Overview

The PCI-1408 features an 8-bit flash ADC that converts video signals to digital formats, four video signal multiplexers, and programmable gain and offset. It also uses a PCI interface for high-speed data transfer, scatter-gather DMA controllers that control the transfer of data between the first-in, first-out (FIFO) memory buffers and the PCI bus, nonvolatile and static RAM for configuring registers on power-up and programming the DMA controllers, and acquisition and region-of-interest control circuitry that monitors video signals. The board also includes powerful trigger circuitry including four external triggers and RTSI bus triggers. Other features include internally generated or externally input CSYNC, HSYNC, VSYNC, and PCLK synchronization and clock signals.

The block diagram in Figure 3-1 illustrates the key functional components of the PCI-1408.

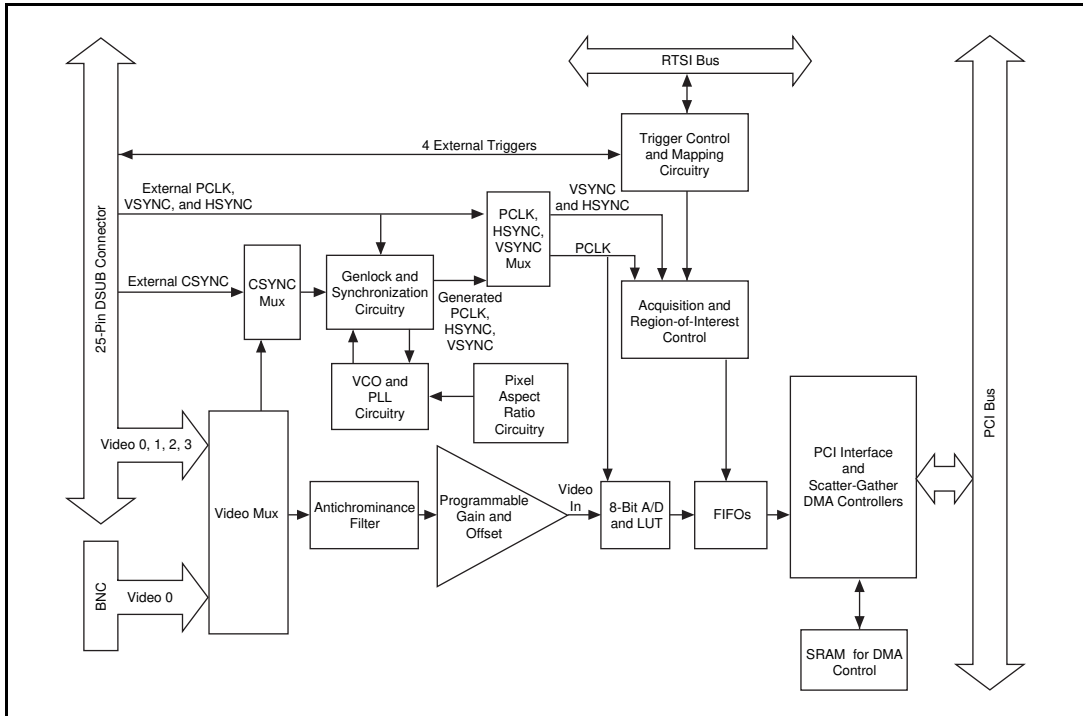


Figure 3-1. PCI-1408 Block Diagram

Video Mux

You can select any of the four AC-coupled video inputs through the video multiplexer circuitry.

Antichrominance Filter

The PCI-1408 includes an antichrominance filter that removes chrominance from a composite color video signal. You can use two software-selectable antichrominance filters: a 3.58 MHz notch filter to remove color information from an NTSC signal and a 4.43 MHz notch filter to remove color information from a PAL signal.

Programmable Gain and Offset

The PCI-1408 uses programmable gain and offset circuitry to optimize the input signal range.

8-Bit ADC and LUT

An 8-bit flash ADC digitizes the image, which is passed to a 256-by-8 bit lookup table (LUT) RAM. You can configure the input LUT to implement simple imaging operations such as contrast enhancement, data inversion, gamma manipulation, or other nonlinear transfer functions.

CSYNC Mux

The composite synchronization (CSYNC) multiplexer lets the genlock and synchronization circuitry select the internally generated composite synchronization signal or the composite synchronization signal received from the I/O connector.

Genlock and Synchronization Circuitry

The genlock and synchronization circuitry receives the incoming video signal and generates a PCLK, HSYNC, and VSYNC signal for use by the acquisition and control circuitry. The synchronization circuitry interacts with the voltage-controlled oscillator (VCO) and phase-locked loop (PLL) circuitry, which generates and controls the PCLK.

VCO and PLL Circuitry

The VCO and PLL circuitry controls the internally generated PCLK signal frequency. The PCI-1408 can digitize an incoming video signal at rates of up to 16.4 MHz.

Pixel Aspect Ratio Circuitry

The pixel aspect ratio circuitry adjusts the ratio between the physical horizontal size and the vertical size of the region covered by the pixel. This value is used to figure the picture aspect ratio. For more information, see the *Acquisition Window Control* section later in this chapter.

PCLK, HSYNC, VSYNC Mux

The acquisition control circuitry selects the clock and synchronization signals through the pixel clock (PCLK), horizontal synchronization (HSYNC), and vertical synchronization (VSYNC) multiplexer. The onboard genlock and synchronization circuitry can generate clock and synchronization signals or the signals can be received from the I/O connector.

RTSI Bus

The seven trigger lines on the RTSI bus provide a flexible interconnection scheme between multiple PCI-1408 boards as well as between any National Instruments DAQ devices and the PCI-1408.

Trigger Control and Mapping Circuitry

The trigger control and mapping circuitry routes, monitors, and drives the external and RTSI bus trigger lines. You can configure each of these lines to start or stop acquisition on a rising or falling edge. In addition, you can drive each line asserted or unasserted, similar to a digital I/O line. You can also map onboard status values (HSYNC, VSYNC, ACQUISITION_IN_PROGRESS, and ACQUISITION_DONE) to the lines.

Acquisition and Region-of-Interest Control

The acquisition and region-of-interest control circuitry monitors the incoming video signal and routes the active pixels to the FIFO buffers. The PCI-1408 can digitize an entire frame and perform pixel and line scaling and region-of-interest acquisition. Pixel and line scaling lets certain multiples (2, 4, or 8) of pixels and lines to be transferred to the PCI bus. In region-of-interest acquisition, you select an area in the acquisition window to transfer to the PCI bus.

FIFO Buffer

The PCI-1408 uses a 4 KB FIFO buffer for temporary storage of the image being transferred to the PCI system memory or display memory. The buffer stores six full video lines during image acquisition.

Scatter-Gather DMA Controllers

The PCI-IMAQ-1408 uses three independent onboard direct memory access (DMA) controllers. The DMA controllers transfer data between the onboard first-in first-out (FIFO) memory buffers and the PCI bus. Each of these controllers supports scatter-gather DMA, which allows the DMA controller to reconfigure on-the-fly. Thus, the PCI-1408 can perform continuous image transfers to either contiguous or fragmented memory buffers.

SRAM

The PCI-1408 uses 64 KB of static RAM (SRAM) for programming the scatter-gather DMA controllers.

PCI Interface

The PCI-1408 implements the PCI interface with a National Instruments custom application-specific integrated circuit (ASIC), the MITE. The PCI interface can transfer data at a maximum rate of 132 Mbytes/s in master mode, which maximizes the available PCI bandwidth. PCI-1408 can generate 8-, 16-, and 32-bit memory read and write cycles, both single and multiple. In slave mode, the PCI-1408 is a medium speed decoder that accepts both memory and configuration cycles. The interface logic ensures that the PCI-1408 meets the loading, driving, and timing requirements of the PCI specification.

Board Configuration NVRAM

The PCI-1408 contains onboard nonvolatile RAM (NVRAM) that configures all registers on power-up.

Video Acquisition

The PCI-1408 can acquire video signals in a variety of modes and transfer the digitized fields or frames to PCI system memory.

Start/Stop Conditions

The PCI-1408 can start and stop acquisition on a variety of conditions:

- **Software control**—The PCI-1408 supports software control of acquisition start and stop. In addition, you can configure the PCI-1408 to capture a fixed number of frames. This configuration is useful for capturing single frames or a sequence of frames.
- **Trigger control**—You can also start and stop acquisition by enabling external or RTSI bus trigger lines. Each of these 11 inputs can start or stop video acquisition on a rising or falling edge. You can use all four external triggers and up to two RTSI bus triggers simultaneously.
- **Delayed acquisition**—You can use either software or triggers to start and stop acquisitions instantaneously or after capturing a desired number of frames or fields. This feature is useful for post- or pre-trigger applications.
- **Frame/field selection**—With an interlaced camera and the PCI-1408 in frame mode, you can program the PCI-1408 to start or stop acquisition on any odd field or any even field.

Acquisition Window Control

You can configure numerous parameters on the PCI-1408 to control the video acquisition window. A brief description of each parameter follows:

- **Horizontal sync**—HSYNC is the synchronization pulse signal produced at the beginning of each video scan line that keeps a video monitor's horizontal scan rate in sequence with the transmission of each new line.
- **Vertical sync**—VSYNC is the synchronization pulse generated at the beginning of each video field that signals the video monitor when to start a new field.
- **Pixel clock**—PCLK times the sampling of pixels on a video line.
- **Composite sync**—CSYNC is the signal consisting of combined horizontal sync pulses and vertical sync pulses.

- Active pixel region—The active pixel region is the region of pixels actively being stored. The active pixel region is defined by a pixel start (relative to HSYNC) and a pixel count.
- Horizontal count—The horizontal count is the total number of pixels between two HSYNC signals. The horizontal count determines the frequency of the pixel clock.
- Active line region—The active line region is the region of lines actively being stored. The active line region is defined by a line start (relative to VSYNC) and a line count.
- Line count—The line count is the total number of horizontal lines in the picture.
- Video line—A video line consists of an HSYNC, back porch, active pixel region, and a front porch, as shown in Figure 3-2.

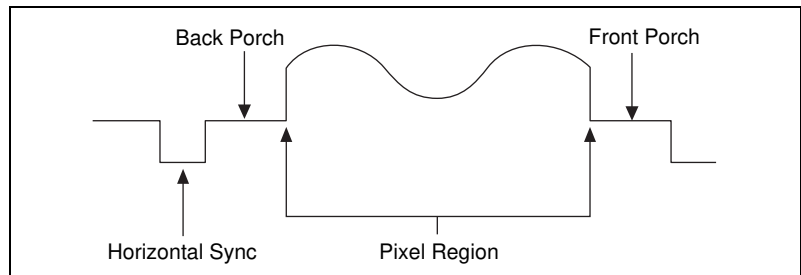


Figure 3-2. Video Line

- Picture aspect ratio—The picture aspect ratio is the ratio of the active pixel region to the active line region. For standard video signals like RS-170 or CCIR, the full-size picture aspect ratio normally is 4:3 (1.33).
- Pixel aspect ratio—The pixel aspect ratio is the ratio between the physical horizontal size and the vertical size of the region covered by the pixel. An acquired pixel should optimally be square, thus the optimal value is 1.0, but typically it falls between 0.95 and 1.05, depending on camera quality.

- **Field**—For an interlaced video signal, a field is half the number of horizontal lines needed to represent a frame, as shown in Figure 3-3. The first field of a frame contains all the odd-numbered lines. The second field contains all of the even-numbered lines.

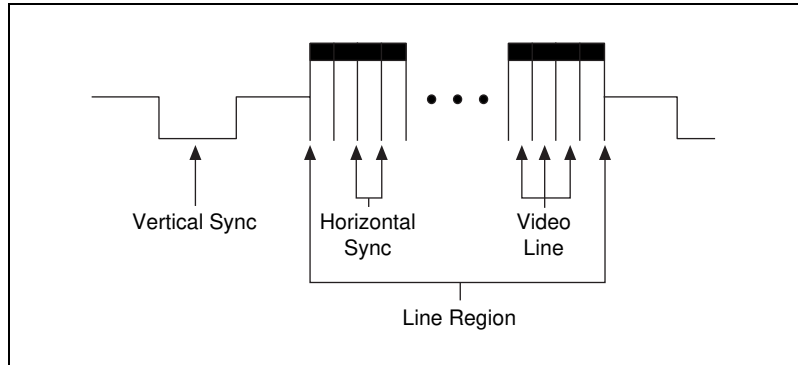


Figure 3-3. Video Field

- **Frame**—A frame is a complete image. In interlaced formats, a frame is composed of two fields.

Programming Video Parameters

You can program all of these video parameters on the PCI-1408:

- **Programmable pixel and line count**—When generating an internal PCLK, the PCI-1408 uses a programmable clock generator with an advanced VCO circuit. This circuitry generates a PCLK frequency from 11 to 16.5 MHz, depending on the horizontal count. The standard sampling rate for RS-170/NTSC video signals is 12.3 MHz, and the standard sampling rate for CCIR/PAL is 14.75 MHz. To correct for external pixel aspect ratio errors of up to $\pm 9\%$, the VCO covers the range from approximately 11.0 to 16.5 MHz.

The PCI-1408 also includes a programmable line count, which you use to switch between RS-170/NTSC (525 lines) and CCIR/PAL (625 lines). In addition, the PCI-1408 supports any line count up to 1,024 lines for nonstandard video inputs.



Note: *You can have up to 2,048 lines in interlaced mode by combining fields.*

- Acquisition window—After setting the pixel and line count, you must program the active pixel region and active line region. The active pixel region selects the starting pixel and number of pixels to be acquired relative to the HSYNC signal. The active line region selects the starting line and number of lines to be acquired relative to the VSYNC signal.
- Region of interest—The PCI-1408 uses a second level of active pixel and active line regions for selecting a region of interest. When you disable the region-of-interest circuitry, the board stores the entire acquisition window in system memory. However, when you enable the region-of-interest circuitry, the board transfers only a selected subset of the digitized frame to system memory.
- Scaling down—The scaling-down circuitry also controls the active acquisition region. The PCI-1408 can scale down a frame by reducing pixel, lines, or both. For active pixel selection, the PCI-1408 can select every pixel, every other pixel, every fourth pixel, or every eighth pixel. For active line selection, the PCI-1408 can select every line, every odd line, or multiples of odd lines, for example, every other odd line or every fourth odd line. You can use the scaling-down circuitry in conjunction with the region-of-interest circuitry.
- Interlaced video—The PCI-1408 supports both interlaced and noninterlaced video signals. In interlaced mode, the PCI-1408 combines the odd and even field into one contiguous frame for analysis. In noninterlaced mode, each field is treated as an independent frame.

Acquisition Modes

The PCI-1408 supports three video acquisition modes:

- **Standard mode**—In standard mode, the PCI-1408 receives an incoming composite video signal from the external BNC or DSUB connector and generates CSYNC, HSYNC, VSYNC, and PCLK signals. The generated CSYNC signal is output on the DSUB connector for use by other image acquisition boards or to synchronize multiple cameras.
- **CSYNC external mode**—In CSYNC external mode, the PCI-1408 receives an incoming video signal (composite or luminance) and an external CSYNC from an external connector. The PCI-1408 takes the incoming video signal and CSYNC and generates HSYNC, VSYNC, and PCLK signals.
- **External lock mode**—You can use this mode to synchronize to a camera or any nonstandard video signal. In this mode, the PCI-1408 receives HSYNC, VSYNC, and PCLK signals for A/D sampling directly from the external connector.

Signal Connections

This chapter describes cable connections for the PCI-1408.

BNC Connector

The BNC external connector supplies an immediate connection to the PCI-1408 VIDEO0 input. Use the 2 m BNC cable shipped with the PCI-1408 to connect a camera to VIDEO0. This connection cannot be used with VIDEO0 on the 25-pin DSUB I/O connector. You can configure the BNC connector only for RSE mode.



Note: *Jumper W1 must be installed when using BNC input.*

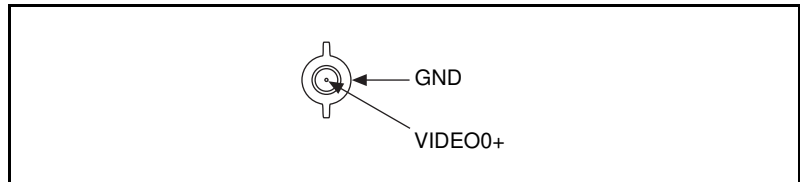


Figure 4-1. BNC Connector Pin Assignment

I/O Connector

The 25-pin DSUB connector connects to all video signals (VIDEO0, VIDEO1, VIDEO2, and VIDEO3), the external digital I/O lines and triggers, and external signals. To access these connections, you can build your own custom cable or use one of the optional cables from National Instruments. Figure 4-2 shows the pinout of the 25-pin DSUB connector.



Note: *Do not use the VIDEO0 connection on the 25-pin DSUB connector with the BNC connection.*

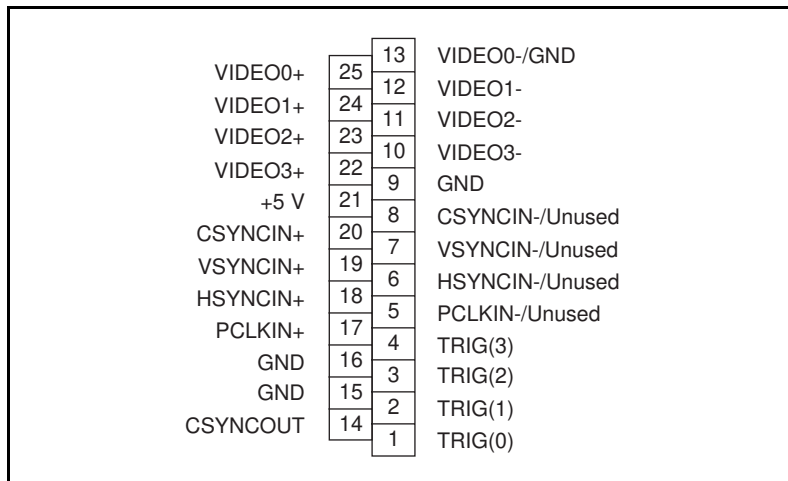


Figure 4-2. I/O Connector Pin Assignments

I/O Connector Signal Connection Descriptions

Table 4-1 describes each signal connection on the 25-pin DSUB connector.

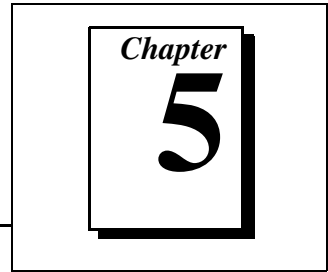
Table 4-1. I/O Connector Signals

Signal Name	Description
VIDEO0±	VIDEO0± allows for a DIFF or RSE connection to video channel 0. To operate in RSE mode, connect VIDEO0- to GND. When you use VIDEO0+ or VIDEO0-, you must disconnect the BNC connector.
VIDEO<3..1>±	VIDEO<3..1>± allows for a DIFF or RSE connection to video channels 1, 2, and 3. To operate in RSE mode, connect VIDEO- to GND.
PCLKIN±	Use PCLKIN± when the PCI-1408 is in external lock mode. In this mode, PCLKIN represents the A/D sampling clock. You can select PCLKIN to be TTL or RS-422 mode, depending on the jumper W3 configuration. In RS-422 mode, both PCLKIN+ and PCLKIN- receive the PCLK signal. The PCLKIN polarity is programmable.
HSYNCIN±	Use HSYNCIN± when the PCI-1408 is in external lock mode. HSYNC is a synchronization pulse produced at the beginning of each video scan line that keeps a video monitor's horizontal scan rate in step with the transmission of each new line. You can set HSYNCIN in TTL or RS-422 mode depending on jumper W3 configuration. In RS-422 mode, both HSYNCIN+ and HSYNCIN- receive the HSYNC signal. The HSYNCIN polarity is programmable.

Table 4-1. I/O Connector Signals (Continued)

Signal Name	Description										
VSYNCIN±	Use VSYNCIN± when the PCI-1408 is in external lock mode. VSYNC is a synchronization pulse generated at the beginning of each video frame that tells the video monitor when to start a new field. You can set VSYNCIN in TTL or RS-422 mode depending on jumper W3 configuration. In RS-422 mode, both VSYNCIN+ and VSYNCIN- receive the VSYNC signal. The VSYNCIN polarity is programmable.										
CSYNCIN±	Use CSYNCIN± when the PCI-1408 is in CSYNC external mode. CSYNC is a signal consisting of horizontal sync pulses, vertical sync pulses, and equalizing pulses only. You can set CSYNCIN in TTL or RS-422 mode, depending on jumper W3 configuration. In RS-422 mode, both CSYNCIN+ and CSYNCIN- receive the CSYNC signal. The CSYNCIN polarity is programmable.										
CSYNCOUT	CSYNCOUT is a TTL output of the internal CSYNC signal. In CSYNC external mode, CSYNCOUT maps directly to CSYNCIN. In standard mode, the synchronization circuitry of the PCI-1408 generates CSYNCOUT.										
TRIG<3..0>	<p>Triggers <3..0> are TTL I/O lines used to start or stop an acquisition or output an acquisition status. You can program the triggers to be rising- or falling-edge sensitive. You can also program the triggers to be programmatically asserted or unasserted similar in function to a digital I/O line. You can program TRIG<3..0> to reflect the following status bits:</p> <table border="1" data-bbox="463 847 1021 1003"> <thead> <tr> <th data-bbox="463 847 692 873">Status Bit</th> <th data-bbox="692 847 1021 873">Description</th> </tr> </thead> <tbody> <tr> <td data-bbox="463 873 692 904">AQ_IN_PROGRESS</td> <td data-bbox="692 873 1021 904">Signals an acquisition in progress</td> </tr> <tr> <td data-bbox="463 904 692 935">AQ_DONE</td> <td data-bbox="692 904 1021 935">Signals an acquisition is completed</td> </tr> <tr> <td data-bbox="463 935 692 966">HSYNC</td> <td data-bbox="692 935 1021 966">The appropriate HSYNC signal</td> </tr> <tr> <td data-bbox="463 966 692 998">PCLK</td> <td data-bbox="692 966 1021 998">The A/D sampling signal</td> </tr> </tbody> </table>	Status Bit	Description	AQ_IN_PROGRESS	Signals an acquisition in progress	AQ_DONE	Signals an acquisition is completed	HSYNC	The appropriate HSYNC signal	PCLK	The A/D sampling signal
Status Bit	Description										
AQ_IN_PROGRESS	Signals an acquisition in progress										
AQ_DONE	Signals an acquisition is completed										
HSYNC	The appropriate HSYNC signal										
PCLK	The A/D sampling signal										
GND	GND is a direct connection to digital GND on the PCI-1408.										
+5V	+5V is a fused connection to +5 V on the PCI-1408 that allows a user to power external triggering circuitry with up to 100 mA.										

Configuration Utility



This chapter describes the basic functions of `IMAQconf`, the configuration and diagnostic utility included with the PCI-1408.

Introduction

`IMAQconf` performs the following functions:

- Configures the video parameters, which are automatically loaded when the saved interface is loaded in NI-IMAQ.
- Displays a histogram, which acts as an aid to configuring your device.
- Displays various look-up tables that let you implement small image processing functions in the hardware.
- Performs snap and continuous video acquisition for diagnostics and verification.
- Creates new camera files for non-standard cameras.
- Saves acquired images to a `pict` format.

Using IMAQconf

To configure your IMAQ device, make sure the device is properly installed (see Chapter 2, *Configuration and Installation*) and then run the `IMAQconf` configuration utility. `IMAQconf` is located in the `NI-IMAQ` folder.

The following sections describe each menu bar selection and each panel in the utility.

Menu Bar

The menu bar lets you change how `IMAQconf` displays the image while you are configuring your IMAQ device.

File Menu

The **File** menu, shown in Figure 5-1, lets you snap, grab, and save an image or abort the acquisition.

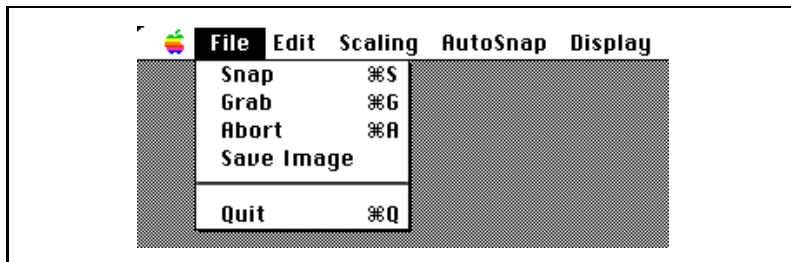


Figure 5-1. File Menu

File menu selections are:

- **Snap**—Acquires a single frame to host memory and display.
- **Grab**—Acquires continuous frames to host memory and display.
- **Abort**—Aborts an acquisition in progress.
- **Save Image**—Saves the current image to disk in `pic.t` file format.
- **Quit**—Exits `IMAQconf`.

Edit Menu

The **Edit** menu, shown in Figure 5-2, provides a tracing feature that is a part of `IMAQconf`. Trace function settings are not permanently stored as an attribute of the interface.

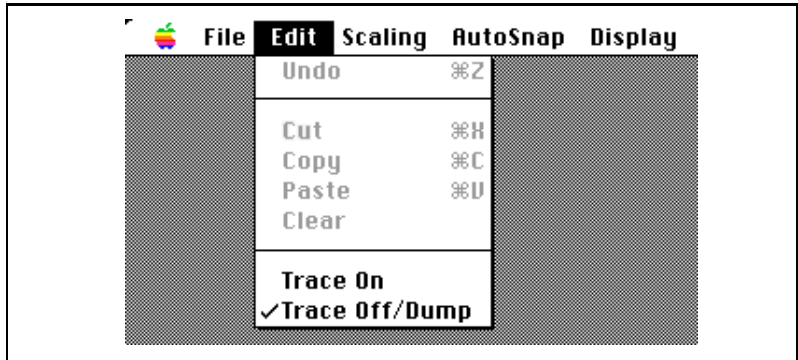


Figure 5-2. Edit Menu

Edit menu settings are:

- **Trace On**—Enables application programming interface (API) internal tracing, which allows you to track any call made to the NI-IMAQ Shared Library. While tracing is enabled, all functions and function parameters are recorded to an internal buffer. This tracing mode can also be enabled using the tracing attributes in the C language interface to the NI-IMAQ API.
- **Trace Off/Dump**—Disables API internal tracing. When tracing is disabled, the contents of the tracing buffer are written to a file called `IMAQ_FuncTrace.txt`. This file is created in the same directory in which `IMAQconf` resides.

Scaling Menu

The **Scaling** setting, shown in Figure 5-3, is an attribute of an interface and remains configured after exiting `IMAQconf`.

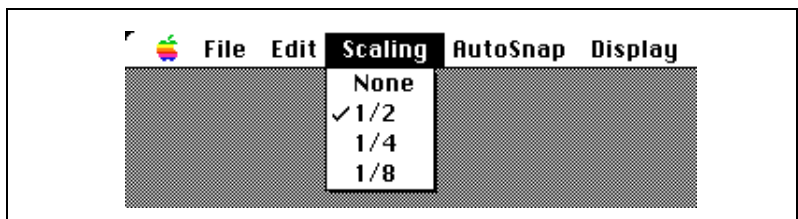


Figure 5-3. Scaling Menu

Scaling choices are:

- **None**—Displays the acquisition window in its normal size.
- **1/2**—Scales the acquisition window in hardware to half of its normal size.
- **1/4**—Scales the acquisition window in hardware to a quarter of its normal size.
- **1/8**—Scales the acquisition window in hardware to an eighth of its normal size.

AutoSnap Menu

AutoSnap, shown in Figure 5-4, is a feature of IMAQconf that snaps a new frame whenever IMAQConf settings change. Its settings are not permanently stored as attributes of the interface.

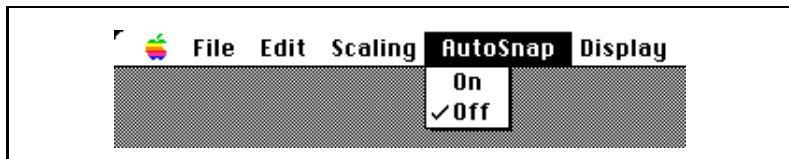


Figure 5-4. Autosnap Menu

The **AutoSnap** menu choices are:

- **On**—Snaps a new frame when a setting is changed that affects the image.
- **Off**—Does not snap a new frame when a setting is changed that affects the image.

Display Menu

Display, shown in Figure 5-5, is a feature of IMAQconf that lets you display a frame in a separate window. Its settings are not permanently stored as an attribute of the interface.

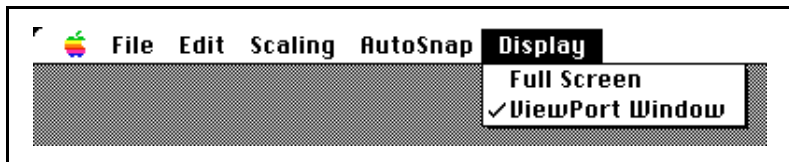


Figure 5-5. Display Menu

The **Display** menu choices are:

- **Full Screen**—Displays frames in a separate window. This window can be resized, minimized, or maximized to the full acquisition window size.



Note: *You can click-and-drag the viewport window to quickly change the display to full screen.*

- **ViewPort Window**—Displays frames in a viewport window embedded in the main IMAQconf window.

Interface Panel

The **Interface** panel in the IMAQconf configuration utility, shown in Figure 5-6, is where basic information about your IMAQ device is stored.

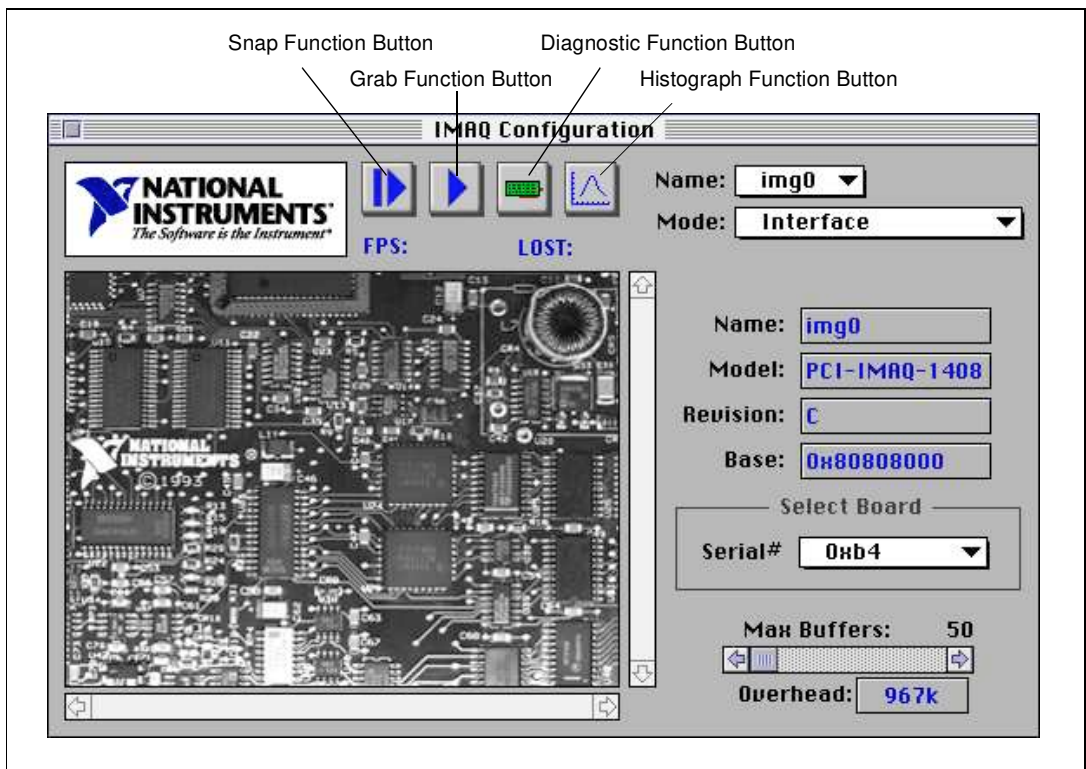


Figure 5-6. Interface Panel Settings

You can use the **Interface** panel to associate each interface name to a particular IMAQ device. Choosing the **Serial** pop-up box allows you to change which device is associated with the chosen interface. In Figure 5-6, the interface, `img0`, is associated with the IMAQ device whose serial number is `0xb4`. If multiple devices are installed in the system, the corresponding serial number should appear as items in the **Serial** pop-up box.

Other information shown pertains to the model, revision, and base address of the IMAQ device.

Camera Type Panel

The **Camera Type** panel, shown in Figure 5-7, allows you to select the camera type and channel used with the chosen interface. Use the **Channel** pop-up box in the **Select Channel** area to change the default video channel desired for acquisition.

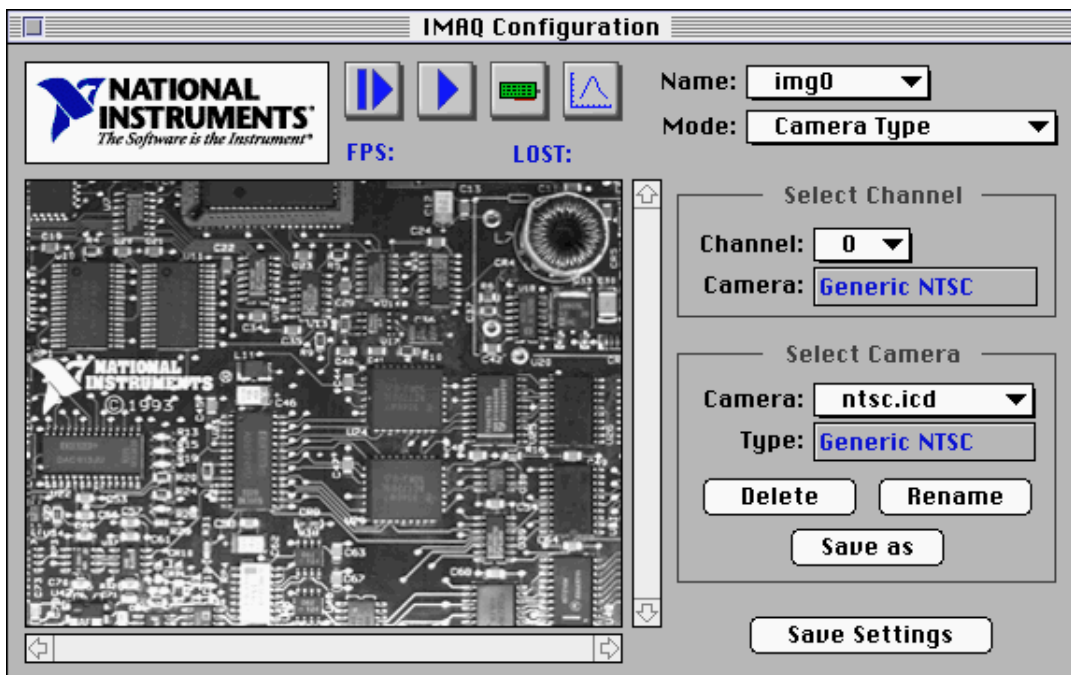


Figure 5-7. Camera Type Panel Settings

Channel 0 video data is readable from both the BNC connector and the 25-pin DSUB connector. Channels 1 through 3 are available only via the 25-pin DSUB connector.

When you select a channel, the camera assigned to that channel will appear in the **Select Channel** status area. The **Select Camera** status area will also be updated to reflect the currently assigned camera. Use the **Select Camera** pop-up box to change the camera assigned to that channel. You can delete or duplicate a camera file by selecting the corresponding button in the **Select Camera** area. Use the **Save as** button to duplicate a camera file if you wish to make non-standard modifications to an existing camera file. Use the **Rename** button to change the description of the selected camera. Use the **Delete** button to delete the selected camera file.



Note: *You can test your new selections at any time by clicking the Snap or Grab video buttons, as shown in Figure 5-6.*

To permanently write modified camera settings to the associated camera file, click on the **Save Settings** button.

Basic Settings Panel

The **Basic Settings** panel, shown in Figure 5-8, allows you to configure basic properties of the currently selected camera.

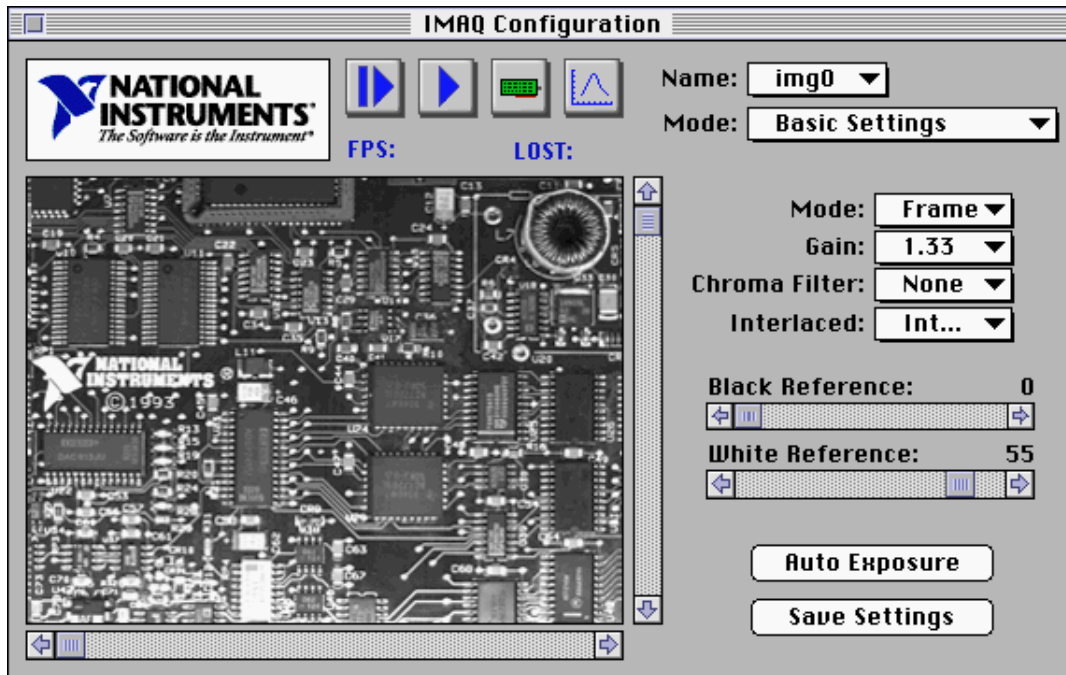


Figure 5-8. Basic Settings Panel

Basic settings include:

- Mode**—Selects frame or field mode. Use frame mode with interlaced cameras and field mode with non-interlaced cameras. You can use field mode with an interlaced camera if you want to acquire sequential odd and even video fields. In frame mode, the IMAQ device waits for a programmable odd or even field before starting a video acquisition. It then combines two fields vertically in an interlaced fashion to create a single video frame in memory.
- Gain**—The IMAQ device has three programmable gain values: 1, 1.33, and 2, which correspond to a fine adjustment of the black and white reference levels of 20, 15, and 10 mV steps. You can use the histogram to monitor and choose the appropriate gain level.

- **Chroma Filter**—The IMAQ device includes optional antichrominance (color) filters to use with NTSC and PAL video signals. The available options for these filters are:
 - **None**—All filters are disabled.
 - **NTSC**—The antichrominance filter is enabled for NTSC-coded signals. The filtering is implemented by a 3.58 MHz notch filter.
 - **PAL**—The antichrominance filter is enabled for PAL-coded signals. The filtering is implemented by a 4.43 MHz notch filter.
- **Interlaced**—Specifies whether the camera delivers an interlaced or non-interlaced signal. You can use non-interlaced cameras only in field mode.
- **Black Reference**—The IMAQ device includes a programmable black reference level to optimize the input signal range. With a gain of 1, the black reference level is programmable in the range from 0 to 1.28 V in 64 steps of 20 mV each. You can use the histogram to monitor and choose the appropriate black reference level.
- **White Reference**—The IMAQ device includes a programmable white reference level to optimize the input signal range. With a gain of 1, the white reference level is programmable in the range from 0 to 1.28 V in 64 steps of 20 mV each. You can use the histogram to monitor and choose the appropriate white reference level.
- **Auto Exposure**—Press this button to instruct IMAQconf to perform a single acquisition and calculate the optimum gain, white, and black reference levels automatically.

Camera Acquisition Panel

The **Camera Acquisition** panel, shown in Figure 5-9, allows you to configure the acquisition window offsets and size to determine the start of the video frame, number of active horizontal pixels, and vertical lines. Use the scroll bars provided to adjust the acquisition window if needed.

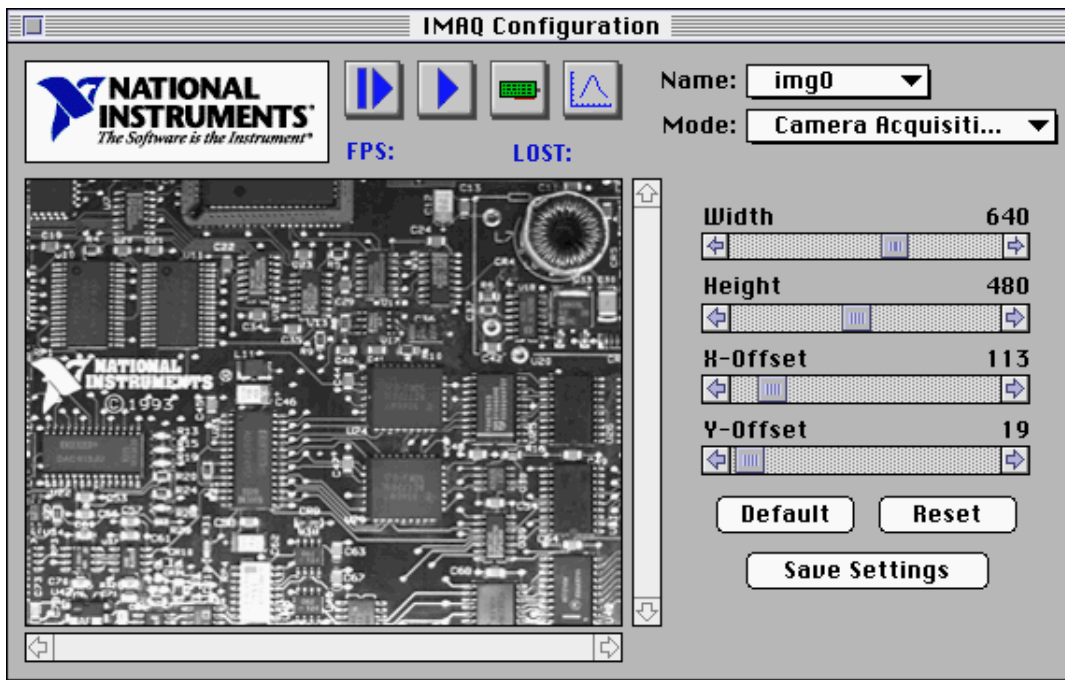


Figure 5-9. Camera Acquisition Panel Settings

By pressing the **Reset** button, you can restore the previous acquisition window settings before saving changes. To restore the default acquisition window settings for your camera type, press the **Default** button. Press the **Save Settings** button to commit your changes to the active camera file when you are finished.

Advanced Panel (1)

The advanced panels let you fine-tune the configuration for your specific camera. **Advanced Panel (1)**, shown in Figure 5-10, contains settings for sync detection and aspect ratio correction.

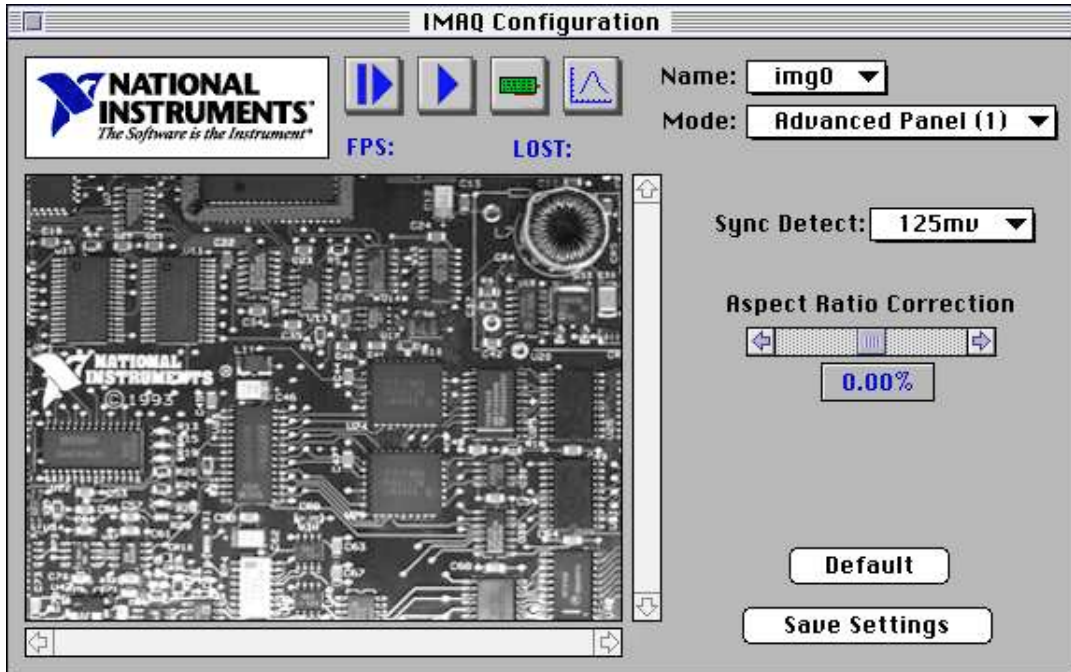


Figure 5-10. Advanced Panel (1)

The **Advanced Panel (1)** settings are as follows:

- **Sync Detect**—This register defines the comparator voltage used to detect a horizontal synchronization pulse. The reference level is the voltage of the sync tips. For a typical video signal, the sync tips is approximately 300 mV below the blanking level and the highest detection value of 125 mV is recommended. Lower values may be used if the incoming video signal is weak or noisy.
- **Aspect Ratio Correction**—This function adjusts the pixel aspect ratio of the acquired picture and also compensates for pixel aspect ratio errors of the camera. Given a standard video format with a default configuration, you can correct errors up to $\pm 8\%$ in steps of $1/\text{HCOUNT}$ or typically 0.15%. Note that using this function will affect most of the **Advanced** camera settings parameters. The function automatically will reposition and resize the picture by adjusting the region of interest offset and width parameters so that the visual region of interest stays unchanged. After you change the **Aspect Ratio Correction** and click the **OK** button, a warning message will appear that tells you the **Acquisition Window** width

and X-offset under the **Basic Camera** dialog box have changed. If necessary, you can manually readjust the ROI parameter.

- **Default**—This button brings back the default settings for the aspect ratio and all associated advanced controls in the advanced panels.

Advanced Panel (2)

Advanced Panel (2), shown in Figure 5-11, contains settings for HSYNC, CLAMP, and ADC calibration.

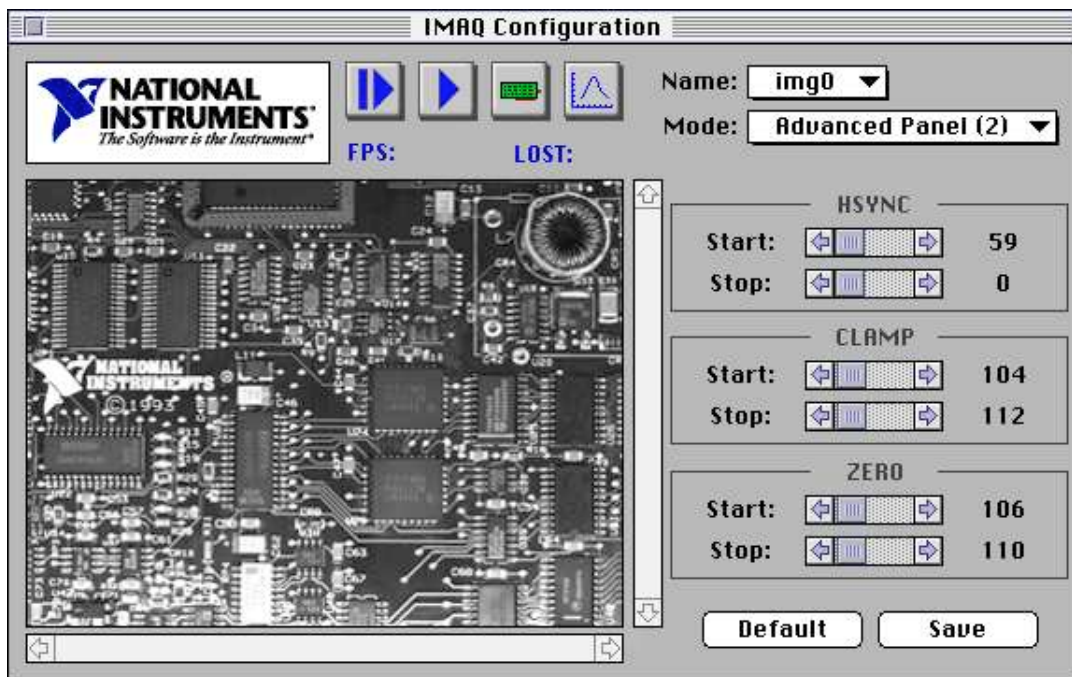


Figure 5-11. Advanced Panel (2)

The **Advanced Panel (2)** settings are as follows:

- **HSYNC Start** and **HSYNC Stop**—These settings define the positioning and duration of the internally generated horizontal (line) synchronization pulse. To generate a negative edge at position zero, set the **HSYNC Stop** value to 0. The width of the pulse in samples is defined by the difference in pixels between **HSYNC Start** and **HSYNC Stop** and is typically 4.7 μ s for standard video.

- **CLAMP Start** and **CLAMP Stop**—The clamp signal restores the DC level to the AC-coupled video signal. The clamping pulse must be positive (**CLAMP Stop** > **CLAMP Start**). It must also be applied on each line somewhere during the blanking period of the video signal. Typically, the clamping pulse occurs between the end of the color burst and the beginning of the active video line for a color camera or anytime on the back porch period of the video signal for a monochrome camera. The duration of the pulse (**CLAMP Stop** – **CLAMP Start**) should be as long as possible and greater than five samples.
- **ZERO Start** and **ZERO Stop**—The zero signal calibrates the ADC on each video line. The pulse conditions—positioning and duration—are the same as for the clamping pulse.
- **Default**—This button brings back the default settings for the controls on this panel.
- **Save**—This button saves your settings to your selected camera file.

Advanced Panel (3)

Advanced Panel (3), shown in Figure 5-12, contains settings for the noise gate, field gate, HCOUNT, and VSYNC.

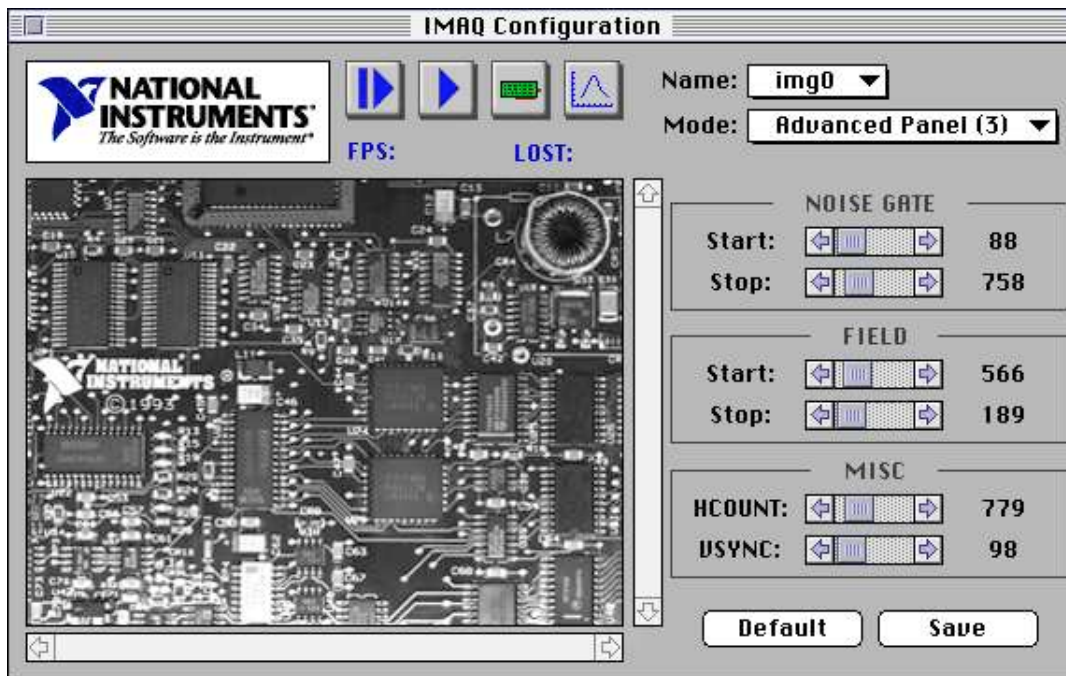


Figure 5-12. Advanced Panel (3)

Advanced Panel (3) settings are as follows:

- NOISE GATE Start and Stop**—The noise gate settings define the period of a video line after lock to a video source where the genlock circuitry will not detect an HSYNC pulse. This nondetection period avoids false HSYNC detection due to noise in the video signal or equalization pulses during the vertical synchronization period. For a typical video signal, the noise gate signal starts after **HSYNC Stop** and stops approximately 3% before the end of the video line defined by **HCOUNT**.
- FIELD Start and Stop**—The field gate signal defines the portion of the video line during vertical synchronization where the field conditions are detected. The duration of the field gate pulse must be approximately 50% of the duration of the line defined by **HCOUNT** and the positioning should be approximately 25% of the line. By swapping the values of **FIELD Start** and **FIELD Stop**, you can reverse the order of the acquired fields (even/odd or odd/even).

- **HCOUNT**—This setting defines the total number of pixels that can be acquired for the entire video line, including synchronization and blanking signals. For example, the total duration of a video line is 64 μ s for a CCIR signal, but the duration of the active video line containing image information is only 52 μ s. To acquire a picture with 768 pixels, enter the value of 768 x (64/52), rounded to 945, into **HCOUNT**. Changing the value of **HCOUNT** affects the pixel aspect ratio of the picture. (See the *Aspect Ratio Correction* section in the *Advanced Panel (1)* section earlier in this chapter.)
- **VSYNC**—The **VSYNC** register defines the duration of the internally generated vertical synchronization pulse. For standard video, the value of **HCOUNT**/8 is recommended.

Operating Mode Panel

The **Operating Mode** panel, shown in Figure 5-13, contains settings for video synchronization signals.

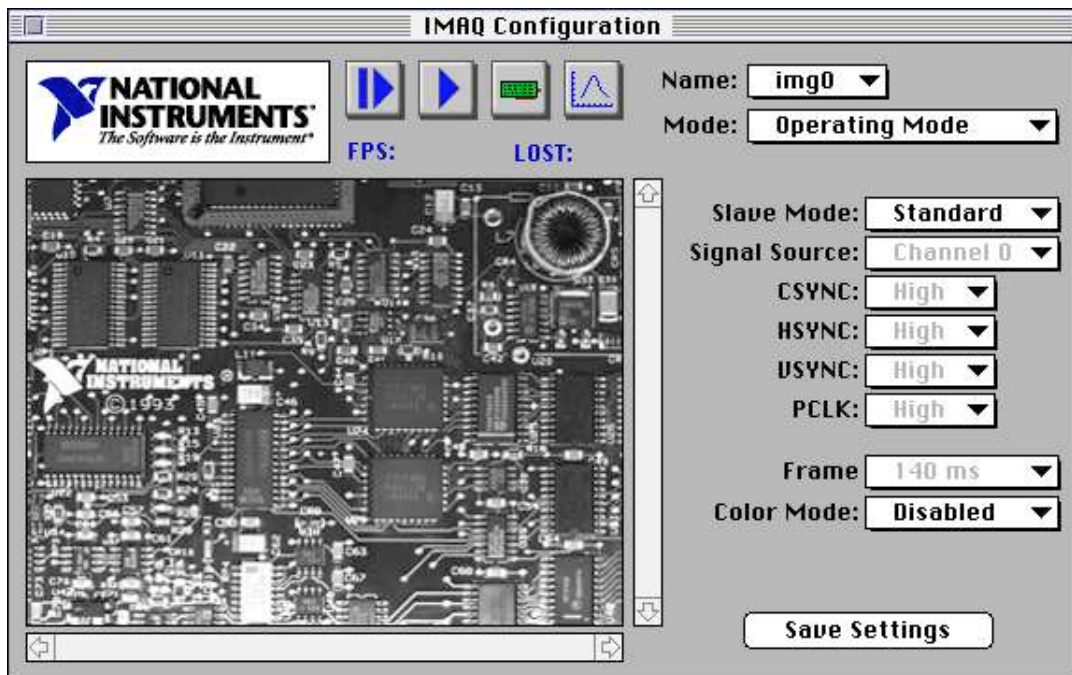


Figure 5-13. Operating Mode Panel Settings

Operating Mode panel settings include:

- **Slave Mode**—The PCI-1408 supports the following slave acquisition modes:
 - **Standard**—In standard mode, the PCI-1408 receives an incoming video signal and generates a CSYNC signal. The internal CSYNC signal generates the PCLK, HSYNC, and VSYNC signals. The PCI-1408 acquisition control circuitry uses these signals to store the acquired data in PCI memory. You can control each of these signals in software. The device parameters adjust the pixels per line (to generate PCLK), the horizontal start (to generate HSYNC), and the vertical start and lines (to generate VSYNC).



Note: *The signal polarity and Signal Source options are disabled in this mode.*

- **CSYNC External Mode**—In CSYNC external mode, the PCI-1408 receives an incoming CSYNC to generate the PCLK, HSYNC, and VSYNC signals. The PCI-1408 acquisition control circuitry uses these signals to store the acquired data in PCI memory. You can control each of these signals in software. The device parameters adjust pixels per line (to generate PCLK), horizontal start (to generate HSYNC), and vertical start and lines (to generate VSYNC).

When you select CSYNC external mode, the CSYNC polarity field also becomes valid. You can configure CSYNC to be active high or active low (rising or falling edge sensitive).



Note: *The signal polarity and Signal Source options are active in this mode.*

- **External Lock Mode**—In external lock mode, the PCI-1408 receives PCLK, HSYNC, and VSYNC from the external connector. When you select external lock mode, the HSYNC polarity, VSYNC polarity, and PCLK polarity fields also become valid. You can configure each signal to be active high or active low (rising or falling edge sensitive).



Note: *The signal polarity options are active and the Signal Source option is disabled in this mode.*

- **CSYNC, HSYNC, VSYNC, and PCLK signal polarity**—You can control the signal polarity for the CSYNC, HSYNC, VSYNC, and PCLK signals. The default for each signal is True Low.

- **Signal Source**—You can specify the input source for the CSYNC signal as either channel 0, channel 1, channel 2, channel 3, or external.
- **Frame**—For externally synchronized, line scan, or area scan cameras, this pop-up menu allows you to extend the frame acquisition timeout period. This setting is used during acquisition only if **External Lock Mode** is the current selection.
- **Color Mode**—The color mode pop-up menu allows you to select a color acquisition of the red, green, and blue planes if using an RGB camera. **RGB Color Camera** mode uses channels 1, 2, and 3 to acquire the red, green, and blue color planes. You must be in one of the external modes to perform an RGB color camera acquisition. The video is synchronized on the channel configured in the basic configuration panel. Grab is disabled while in **RGB Color Camera** mode.
- **Save Settings**—Click on this button to save the current settings to your camera file.

Hardware Lookup Table Panel

You can configure the input lookup table (LUT) to implement simple imaging operations such as contrast enhancement, data inversion, gamma manipulation, or other nonlinear transfer function. Figure 5-14 shows the **Hardware Lookup Table** panel settings.

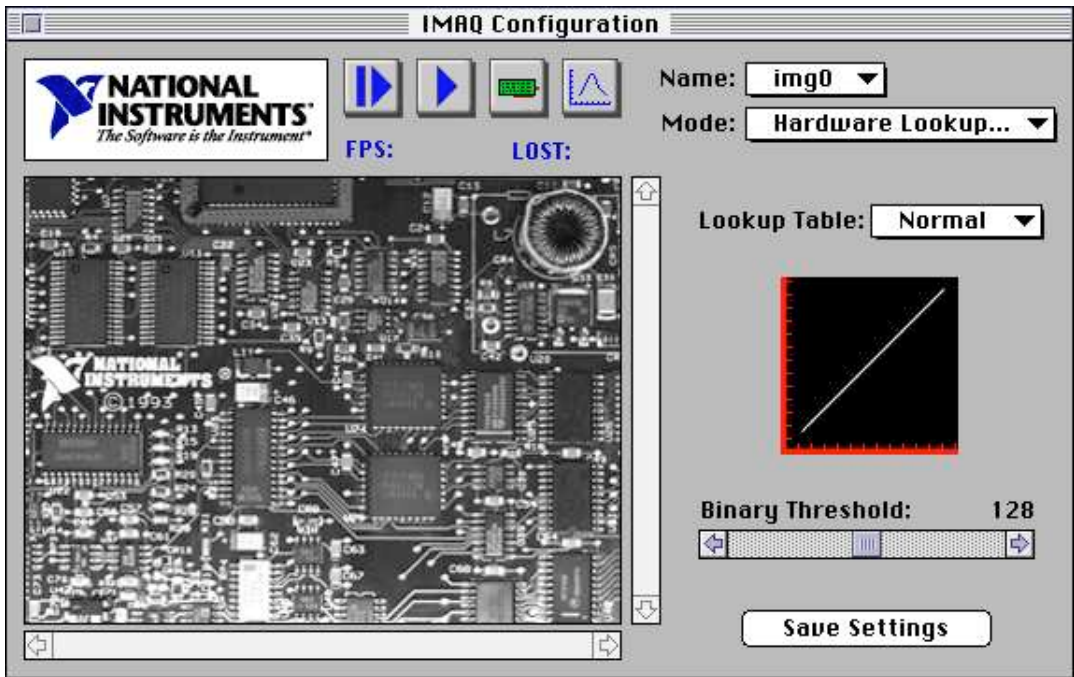


Figure 5-14. Hardware Lookup Table Panel

You can control the LUT through the NI-IMAQ software or you can select a predefined LUT in the IMAQconf configuration utility.

The predefined **Lookup Table** selections are as follows:

- **Normal**—When you select this option, the LUT is effectively disabled, as shown in Figure 5-15.

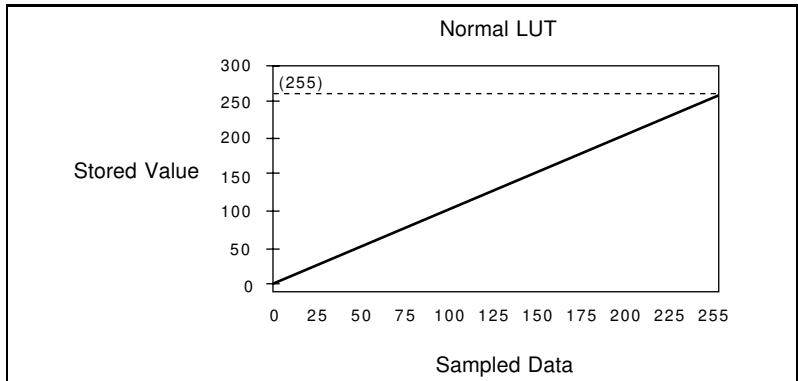


Figure 5-15. Normal LUT

- **Inverse**—When you select this option, the LUT inverts the gray levels, as shown in Figure 5-16.

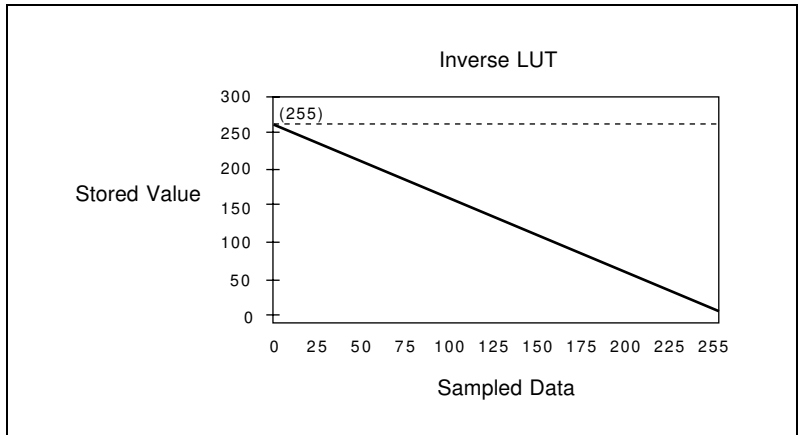


Figure 5-16. Inverse LUT

- **Log**—When you select this option, the LUT converts the sampled data to a logarithmic form that produces greater contrast in the *black* region, as shown in Figure 5-17.

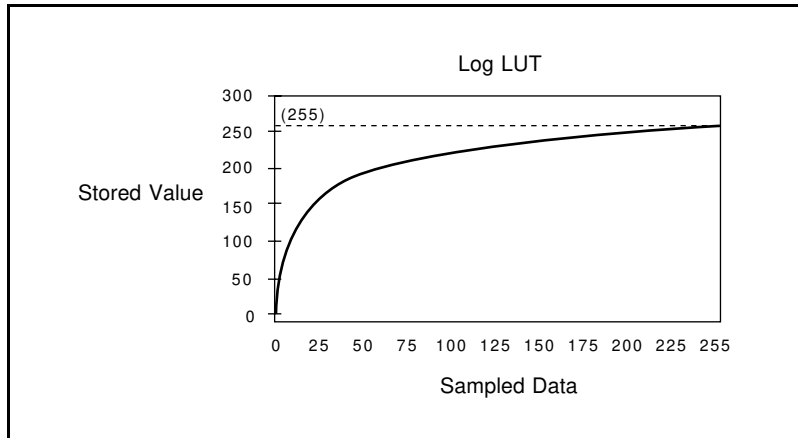


Figure 5-17. Log LUT

- **Exponential**—When you select this option, the LUT converts the sampled data to a logarithmic form that produces greater contrast in the *white* region, as shown in Figure 5-18.

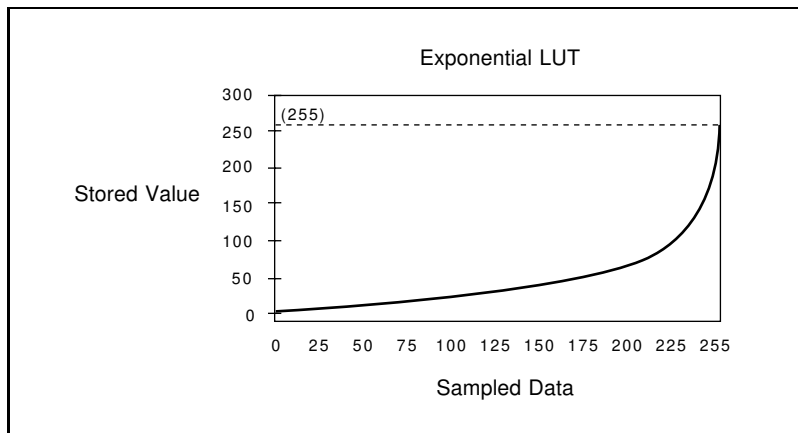


Figure 5-18. Exponential LUT

- **Binary**—When you select this option, the LUT converts the sampled data to a binary image of black or white, as shown in Figure 5-19. The threshold point is determined by the number you set with the **Binary Threshold** scrollbar.

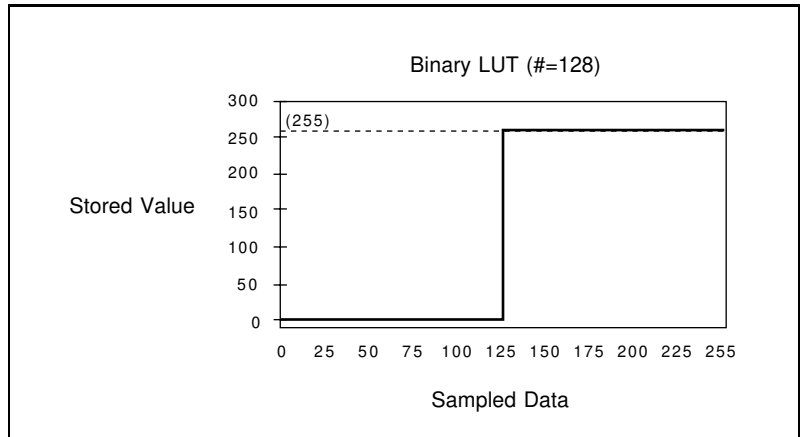


Figure 5-19. Binary LUT

- **Inverse Binary**—When you select this option, the LUT converts the sampled data to a binary image of black or white with the lighter areas becoming black and the darker areas white, as shown in Figure 5-20. The threshold point is determined by the number you set with the **Binary Threshold** scrollbar.



Note:

The Binary Threshold scrollbar specifies the threshold point for the binary and inverse binary LUTs. This option is disabled for the other LUTs.

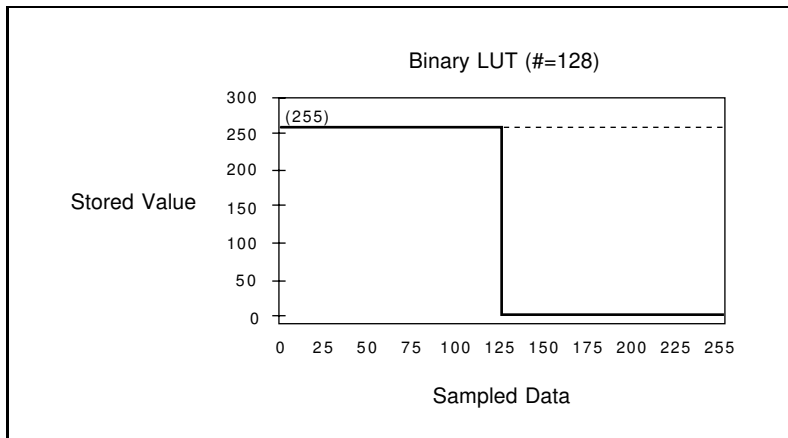


Figure 5-20. Inverse Binary LUT

Video Sequence Recording Panel

You can use the **Video Sequence Recording** panel, shown in Figure 5-21, to record a video sequence and save it to disk as a QuickTime movie. This feature requires QuickTime 2.0 or later.

Use the **Display/Rec** pop-up box to turn off the video display when recording to improve real-time playback synchronization at high frame rates.

Use the **Recording (secs)** scrollbar to select the maximum recording time of your video sequence. `IMAQconf` will attempt to allocate a buffer large enough to hold the entire video sequence. If you record a large time slice of video at a high frame rate or a high frame rate with a large acquisition size, you will need to allocate sufficient memory. You will get an error if `IMAQconf` does not have enough memory to hold the requested video sequence.

You can increase the amount of memory given to `IMAQconf` by increasing the **Preferred size** attribute in the `IMAQconf` application information window. While in `Finder` and while *not* running `IMAQConf`, highlight `IMAQConf` by clicking once on its icon. Choose **Get Info** from the **File** menu. Now you can change the of memory you want to allocate for `IMAQConf`.

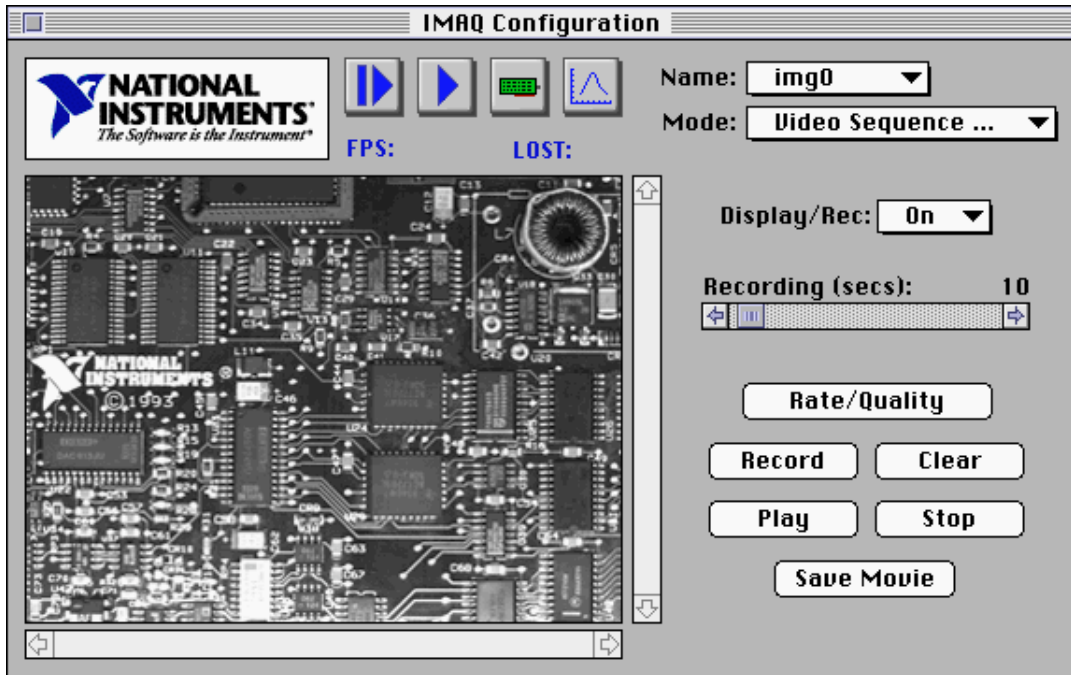


Figure 5-21. Video Sequence Recording Panel

You can specify the playback frame rate by choosing the **Rate/Quality** pop-up box. The QuickTime standard compression settings dialog allows you to choose the frames per second, quality, and video compressor to use when recording your video sequence. Set the frames per second value to the number of frames per second at which you want IMAQconf to capture the sequence. To synchronize the playback rate with the recording rate, IMAQconf will skip frames when acquiring a video sequence, if necessary. IMAQconf stores these frames in a large buffer, which is allocated for your video sequence when you press **Record**.

To start recording, press **Record**. When the recording is finished, you can press **Play** to review the video sequence in memory. The captured video sequence will remain in memory until you press **Clear**. To save the video sequence to disk as a QuickTime movie, press the **Save Movie** button. IMAQconf displays the video sequence as it is saved to disk. Click **Stop** to abort a recording before it completes.

Saving Your Configuration

When you complete the configuration, choose the **File»Save** option to save the resulting configuration so that the NI-IMAQ software can reference it.

Testing Your Configuration

After setup, use `IMAQconf` to test your configuration using its **Grab** and **Snap** functions, located either in the utility toolbar or under the **Acquire** menu (see Figure 5-6). You can use the resulting image and histogram to modify your configuration.

The functions for testing your configuration are as follows:

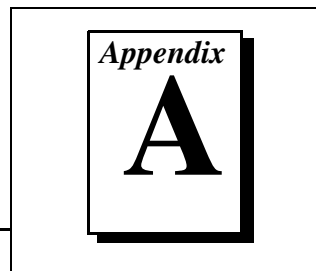
- **Grab**—Click on the **Grab** button to make the PCI-1408 capture images in continuous mode at the maximum rate. If your display cannot keep up with the maximum rate acquisition, `IMAQconf` will continue to acquire images at the maximum rate but will display the images onscreen at the fastest allowable rate your system supports. The acquisition and display rates are shown in the title bar. Pressing the **Grab** button for the second time halts the grab function and displays the last acquired image on the screen.
- **Snap**—Clicking on the **Snap** button will result in the PCI-1408 capturing and displaying a single video frame or field depending on the mode of the device.
- **Histogram**—The PCI-1408 displays the histogram of the captured image. You can use the histogram as an aid in setting the gain and offset values to receive the maximum input signal range.
- **Diagnostics**—The **Diagnostics** button lets you run diagnostic tests on the device. If your device successfully completes the test, you will see a dialog box with the sentence, “All tests were successfully completed.” If your device fails, a dialog box will print each error in the order it occurs.

Image Storage

The PCI-1408 can store the captured image in `pict` format if you select the **Save Image** option from the **File** menu.

Storing the image serves two purposes. First, it saves a reference picture. Second, you can use the PCI-1408 to acquire images that you can later modify with virtually any image processing application without using NI-IMAQ.

Specifications



This appendix lists the specifications of the PCI-1408. These specifications are typical at 25° C, unless otherwise stated.

Formats Supported

RS-170/NTSC	60 Hz (Interlaced mode: 60 fields/s)
CCIR/PAL	50 Hz (Interlaced mode: 50 fields/s)
Variable scan	Programmable

Video Input

Quantity	Four monochrome
Input impedance	75 Ω
VIDEO0	RSE or DIFF (BNC or DSUB)
VIDEO<3..1>	RSE or DIFF (DSUB)
Frequency response	20 MHz (-3 dB) typ
Antichrominance filter	Programmable (disabled, 3.58 MHz notch filter, or 4.43 MHz notch filter)
Filter characteristics	Attenuation at notch frequency > 25 dB
Gain	Programmable (1, 1.33, or 2)

Black reference	Programmable (0–1.28 V in 64 20 mV steps at a gain of 1)
White reference	Programmable (0–1.28 V in 64 20 mV steps at a gain of 1)

A/D Conversion

Gray levels	256 (8 bit)
Differential nonlinearity	± 1 LSB max
RMS noise	< 0.5 LSB rms
Signal-to-noise ratio	48 dB typ
Sampling rate	3 to 20 MHz, externally clocked
Pixel aspect ratio	Programmable (VCO range 11.0 to 16.4 MHz)

External Connections

Trigger sense	TTL
Trigger level	Programmable (rising or falling)
PCLKIN sense	Selectable (TTL or RS-422)
PCLKIN level	Programmable (direct or invert)
HSYNCIN sense	Selectable (TTL or RS-422)
HSYNCIN level	Programmable (rising or falling)
VSYNCIN sense	Selectable (TTL or RS-422)
VSYNCIN level	Programmable (rising or falling)
CSYNCIN sense	Selectable (TTL or RS-422)
CSYNCIN level	Programmable (rising or falling)

Pulse width	50 ns
V _{IH} (TTL)	2 V
V _{IL} (TTL)	0.8 V

Internal Pixel Clock

Generate frequency	11.0 to 16.4 MHz
Pixel ratio for standard video sources	±8%
Pixel jitter	< 5 ns peak

PCI Interface

PCI initiator (master) capability	Supported
PCI target (slave) capability	Supported
Data path	32 bits
Card voltage	5 V only
Card type	32-bit half-size card
Parity generation/checking, error reporting	Supported
Target decode speed	Medium (1 clock)
Target fast back-to-back capability	Supported
Resource locking	Supported as a master and slave
PCI interrupts	Interrupts passed on INTA# signal
Base address registers	BAR0 (16 KB) BAR1 (64 KB)

Custom Cables

Appendix B

This appendix lists specifications for building custom cables for your PCI-1408.

Cable Specification

National Instruments offers cables and accessories for you to connect to video sources, trigger sources, or synchronization sources. However, if you want to develop your own cables, the following guidelines must be met:

- For the video inputs, use a $75\ \Omega$ shielded coaxial cable.
- For the digital triggers and synchronization signals, twisted pairs for each signal yield the best result.
- For the 25-pin DSUB connector, use AMP part number 747912-2 or equivalent.

For information on connector pin assignments, see the *I/O Connector* section in Chapter 4, *Signal Connections*.

Connector specifications include:

- Video and sync signals $75\ \Omega$ impedance
- Trigger signals TTL
- Type $75\ \Omega$ BNC or
25-pin DSUB receptacle
(as shown in Figure B-1)

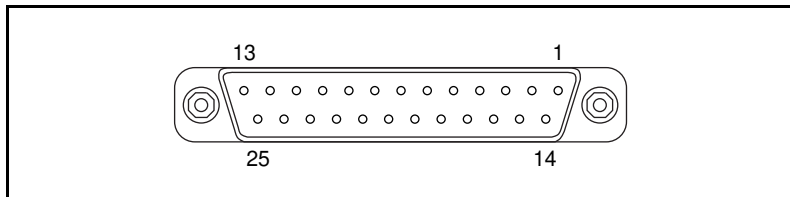
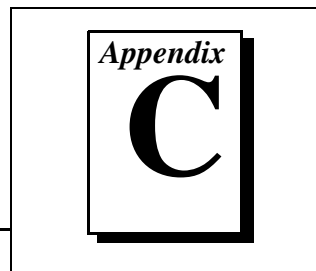


Figure B-1. 25-Pin DSUB Receptacle

Customer Communication



For your convenience, this appendix contains forms to help you gather the information necessary to help us solve your technical problems and a form you can use to comment on the product documentation. When you contact us, we need the information on the Technical Support Form and the configuration form, if your manual contains one, about your system configuration to answer your questions as quickly as possible.

National Instruments has technical assistance through electronic, fax, and telephone systems to quickly provide the information you need. Our electronic services include a bulletin board service, an FTP site, a Fax-on-Demand system, and e-mail support. If you have a hardware or software problem, first try the electronic support systems. If the information available on these systems does not answer your questions, we offer fax and telephone support through our technical support centers, which are staffed by applications engineers.

Electronic Services



Bulletin Board Support

National Instruments has BBS and FTP sites dedicated for 24-hour support with a collection of files and documents to answer most common customer questions. From these sites, you can also download the latest instrument drivers, updates, and example programs. For recorded instructions on how to use the bulletin board and FTP services and for BBS automated information, call (512) 795-6990. You can access these services at:

United States: (512) 794-5422

Up to 14,400 baud, 8 data bits, 1 stop bit, no parity

United Kingdom: 01635 551422

Up to 9,600 baud, 8 data bits, 1 stop bit, no parity

France: 01 48 65 15 59

Up to 9,600 baud, 8 data bits, 1 stop bit, no parity



FTP Support

To access our FTP site, log on to our Internet host, `ftp.natinst.com`, as anonymous and use your Internet address, such as `joesmith@anywhere.com`, as your password. The support files and documents are located in the `/support` directories.



Fax-on-Demand Support

Fax-on-Demand is a 24-hour information retrieval system containing a library of documents on a wide range of technical information. You can access Fax-on-Demand from a touch-tone telephone at (512) 418-1111.



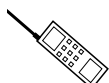
E-Mail Support (currently U.S. only)

You can submit technical support questions to the applications engineering team through e-mail at the Internet address listed below. Remember to include your name, address, and phone number so we can contact you with solutions and suggestions.

support@natinst.com

Telephone and Fax Support

National Instruments has branch offices all over the world. Use the list below to find the technical support number for your country. If there is no National Instruments office in your country, contact the source from which you purchased your software to obtain support.



Telephone



Fax

Australia	03 9879 5166	03 9879 6277
Austria	0662 45 79 90 0	0662 45 79 90 19
Belgium	02 757 00 20	02 757 03 11
Canada (Ontario)	905 785 0085	905 785 0086
Canada (Quebec)	514 694 8521	514 694 4399
Denmark	45 76 26 00	45 76 26 02
Finland	09 725 725 11	09 725 725 55
France	01 48 14 24 24	01 48 14 24 14
Germany	089 741 31 30	089 714 60 35
Hong Kong	2645 3186	2686 8505
Israel	03 5734815	03 5734816
Italy	02 413091	02 41309215
Japan	03 5472 2970	03 5472 2977
Korea	02 596 7456	02 596 7455
Mexico	5 520 2635	5 520 3282
Netherlands	0348 433466	0348 430673
Norway	32 84 84 00	32 84 86 00
Singapore	2265886	2265887
Spain	91 640 0085	91 640 0533
Sweden	08 730 49 70	08 730 43 70
Switzerland	056 200 51 51	056 200 51 55
Taiwan	02 377 1200	02 737 4644
U.K.	01635 523545	01635 523154

Technical Support Form

Photocopy this form and update it each time you make changes to your software or hardware, and use the completed copy of this form as a reference for your current configuration. Completing this form accurately before contacting National Instruments for technical support helps our applications engineers answer your questions more efficiently.

If you are using any National Instruments hardware or software products related to this problem, include the configuration forms from their user manuals. Include additional pages if necessary.

Name _____

Company _____

Address _____

Fax (____) _____ Phone (____) _____

Computer brand _____ Model _____ Processor _____

Operating system (include version number) _____

Clock speed _____MHz RAM _____MB Display adapter _____

Mouse ___yes ___no Other adapters installed _____

Hard disk capacity _____MB Brand _____

Instruments used _____

National Instruments hardware product model _____ Revision _____

Configuration _____

National Instruments software product _____ Version _____

Configuration _____

The problem is: _____

List any error messages: _____

The following steps reproduce the problem: _____

PCI-1408 Hardware and Software Configuration Form

Record the settings and revisions of your hardware and software on the line to the right of each item. Complete a new copy of this form each time you revise your software or hardware configuration, and use this form as a reference for your current configuration. Completing this form accurately before contacting National Instruments for technical support helps our applications engineers answer your questions more efficiently.

National Instruments Products

IMAQ hardware _____

Interrupt level of hardware _____

DMA channels of hardware _____

Base I/O address of hardware _____

Programming choice _____

NI-IMAQ, IMAQ Vision, or LabVIEW version _____

Other boards in system _____

Base I/O address of other boards _____

DMA channels of other boards _____

Interrupt level of other boards _____

Other Products

Computer make and model _____

Microprocessor _____

Clock frequency or speed _____

PCI chipset _____

Type of video board installed _____

Operating system version _____

Operating system mode _____

Programming language _____

Programming language version _____

Other boards in system _____

Base I/O address of other boards _____

DMA channels of other boards _____

Interrupt level of other boards _____

Documentation Comment Form

National Instruments encourages you to comment on the documentation supplied with our products. This information helps us provide quality products to meet your needs.

Title: *Getting Started with Your IMAQ PCI-1408 and the NI-IMAQ Software for Mac OS*

Edition Date: June 1997

Part Number: 321557A-01

Please comment on the completeness, clarity, and organization of the manual.

If you find errors in the manual, please record the page numbers and describe the errors.

Thank you for your help.

Name _____

Title _____

Company _____

Address _____

Phone (____) _____ Fax (____) _____

Mail to: Technical Publications
National Instruments Corporation
6504 Bridge Point Parkway
Austin, TX 78730-5039

Fax to: Technical Publications
National Instruments Corporation
(512) 794-5678

Prefix	Meaning	Value
p-	pico-	10^{-12}
n-	nano-	10^{-9}
μ -	micro-	10^{-6}
m-	milli-	10^{-3}
k-	kilo-	10^3
M-	mega-	10^6
G-	giga-	10^9

Numbers/Symbols

%	percent
+	positive of, or plus
+5V	5 V signal
-	negative of, or minus
/	per
\pm	plus or minus
Ω	ohm

A

A	amperes
AC	alternating current
acquisition window	the image size specific to a video standard or camera resolution
active line region	the region of lines actively being stored; defined by a line start (relative to VSYNC) and a line count
active pixel region	the region of pixels actively being stored; defined by a pixel start (relative to HSYNC) and a pixel count
A/D	analog-to-digital
ADC	analog-to-digital converter—an electronic device, often an integrated circuit, that converts an analog voltage to a digital number
address	character code that identifies a specific location (or series of locations) in memory
ANSI	American National Standards Institute
antichrominance filter	removes the color information from the video signal
API	application programming interface
AQ_DONE	signals that the acquisition of a frame or field is completed
AQ_IN_PROGRESS	signals that the acquisition of video data is in progress
area	a rectangular portion of an acquisition window or frame that is controlled and defined by software
array	ordered, indexed set of data elements of the same type
ASIC	Application-Specific Integrated Circuit—a proprietary semiconductor component designed and manufactured to perform a set of specific functions for a specific customer
aspect ratio	the ratio of a signal's width to its height

B

b	bit—one binary digit, either 0 or 1
B	byte—eight related bits of data, an eight-bit binary number; also used to denote the amount of memory required to store one byte of data
back porch	the area of the video signal between the rising edge of the horizontal sync signal and the active video information
black reference level	the level that represents the darkest an image can get <i>See also</i> white reference level.
buffer	temporary storage for acquired data
bus	the group of conductors that interconnect individual circuitry in a computer, such as the PCI bus; typically the expansion vehicle to which I/O or other devices are connected

C

C	Celsius
cache	high-speed processor memory that buffers commonly used instructions or data to increase processing throughput
CCIR	Comite Consultatif International des Radiocommunications—a committee that developed standards for color video signals
chrominance	the color information in a video signal
CMOS	complementary metal-oxide semiconductor
compiler	a software utility that converts a source program in a high-level programming language, such as Basic, C or Pascal, into an object or compiled program in machine language. Compiled programs run 10 to 1,000 times faster than interpreted programs <i>See also</i> Interpreter.

conversion device	device that transforms a signal from one form to another; for example, analog-to-digital converters (ADCs) for analog input and digital-to-analog converters (DACs) for analog output
CPU	central processing unit
CSYNC	composite sync signal; a combination of the horizontal and vertical sync pulses
CSYNCIN	composite sync in signal
CSYNCOU	composite sync out signal

D

D/A	digital-to-analog
DAC	digital-to-analog converter; an electronic device, often an integrated circuit, that converts a digital number into a corresponding analog voltage or current
DAQ	data acquisition—(1) collecting and measuring electrical signals from sensors, transducers, and test probes or fixtures and inputting them to a computer for processing; (2) collecting and measuring the same kinds of electrical signals with A/D or DIO boards plugged into a computer, and possibly generating control signals with D/A and/or DIO boards in the same computer
dB	decibel; the unit for expressing a logarithmic measure of the ratio of two signal levels: $dB=20\log_{10} V_1/V_2$, for signals in volts
DC	direct current
default setting	a default parameter value recorded in the driver; in many cases, the default input of a control is a certain value (often 0) that means <i>use the current default setting</i> .
DIN	Deutsche Industrie Norme
DLL	dynamic link library—a software module in Microsoft Windows containing executable code and data that can be called or used by Windows applications or other DLLs; functions and data in a DLL are loaded and linked at run time when they are referenced by a Windows application or other DLLs

DMA direct memory access—a method by which data can be transferred to and from computer memory from and to a device or memory on the bus while the processor does something else; DMA is the fastest method of transferring data to/from computer memory

DRAM dynamic RAM

drivers software that controls a specific hardware device such as an IMAQ or DAQ device.

dynamic range the ratio of the largest signal level a circuit can handle to the smallest signal level it can handle (usually taken to be the noise level), normally expressed in dB

E

EEPROM electrically erasable programmable read-only memory—ROM that can be erased with an electrical signal and reprogrammed

external trigger a voltage pulse from an external source that triggers an event such as A/D conversion

F

field For an interlaced video signal, a field is half the number of horizontal lines needed to represent a frame of video; the first field of a frame contains all the odd-numbered lines, the second field contains all of the even-numbered lines.

FIFO first-in first-out memory buffer—the first data stored is the first data sent to the acceptor; FIFOs are used on IMAQ devices to temporarily store incoming data until that data can be retrieved. For example, an analog input FIFO stores the results of A/D conversions until the data can be retrieved into system memory, a process that requires the servicing of interrupts and often the programming of the DMA controller. This process can take several milliseconds in some cases. During this time, data accumulates in the FIFO for future retrieval.

flash ADC an ADC whose output code is determined in a single step by a bank of comparators and encoding logic

frame	a complete image; in interlaced formats, a frame is composed of two fields
front porch	the area of a video signal between the start of the horizontal blank and the start of the horizontal sync
ft	feet
function	a set of software instructions executed by a single line of code that may have input and/or output parameters and returns a value when executed; examples of functions are:

```
y = COS (x)
status = AO_config(board, channel, range)
```

G

gamma	the nonlinear change in the difference between the video signal's brightness level and the voltage level needed to produce that brightness
genlock	circuitry that aligns the video timing signals by locking together the horizontal, vertical, and color subcarrier frequencies and phases and generates a pixel clock to clock pixel data into memory for display or into another circuit for processing
GND	ground signal
GUI	graphical user interface—an intuitive, easy-to-use means of communicating information to and from a computer program by means of graphical screen displays; GUIs can resemble the front panels of instruments or other objects associated with a computer program.

H

h	hour
hardware	the physical components of a computer system, such as the circuit boards, plug-in boards, chassis, enclosures, peripherals, cables, and so on

HSYNC	horizontal sync signal—the synchronization pulse signal produced at the beginning of each video scan line that keeps a video monitor's horizontal scan rate in step with the transmission of each new line
HSYNCIN	horizontal sync input signal
Hz	hertz—the number of scans read or updates written per second
I	
IC	integrated circuit
ID	identification
IEEE	Institute of Electrical and Electronics Engineers
IMAQconf	a configuration and diagnostic utility included with IMAQ devices
in.	inches
INL	integral nonlinearity—A measure in LSB of the worst-case deviation from the ideal A/D or D/A transfer characteristic of the analog I/O circuitry
instrument driver	a set of high-level software functions, such as NI-IMAQ, that controls specific plug-in computer boards; instrument drivers are available in several forms, ranging from a function callable from a programming language to a virtual instrument (VI) in LabVIEW
interlaced	a video frame composed of two interleaved fields; the number of lines in a field are half the number of lines in an interlaced frame
interpreter	a software utility that executes source code from a high-level language such as Basic, C or Pascal, by reading one line at a time and executing the specified operation <i>See also</i> compiler.
interrupt	a computer signal indicating that the CPU should suspend its current task to service a designated activity
interrupt level	the relative priority at which a device can interrupt

I/O input/output—the transfer of data to/from a computer system involving communications channels, operator interface devices, and/or data acquisition and control interfaces

IRQ interrupt request

K

k kilo—the standard metric prefix for 1,000, or 10^3 , used with units of measure such as volts, hertz, and meters

K kilo—the prefix for 1,024, or 2^{10} , used with B in quantifying data or computer memory

kbytes/s a unit for data transfer that means 1,000 or 10^3 bytes/s

Kword 1,024 words of memory

L

library a file containing compiled object modules, each comprised of one of more functions, that can be linked to other object modules that make use of these functions.

line count the total number of horizontal lines in the picture

LSB least significant bit

LUT look-up table—a selection in the `IMAQconf` configuration utility that contains formulas that let you implement simple imaging operations such as contrast enhancement, data inversion, gamma manipulation, or other nonlinear transfer functions

M

m meters

M (1) Mega, the standard metric prefix for 1 million or 10^6 , when used with units of measure such as volts and hertz; (2) mega, the prefix for 1,048,576, or 2^{20} , when used with B to quantify data or computer memory

MB	megabytes of memory
Mbytes/s	a unit for data transfer that means 1 million or 10^6 bytes/s
memory buffer	<i>See</i> buffer.
memory window	continuous blocks of memory that can be accessed quickly by changing addresses on the local processor
MSB	most significant bit
MTBF	mean time between failure
mux	multiplexer—a switching device with multiple inputs that selectively connects one of its inputs to its output

N

NI-IMAQ	driver software for National Instruments IMAQ hardware
noninterlaced	a video frame where all the lines are scanned sequentially, instead of divided into two frames as in an interlaced video frame
NTSC	National Television Standards Committee—the committee that developed the color video standard used primarily in North America, which uses 525 lines per frame. <i>See also</i> PAL.
NVRAM	nonvolatile RAM—RAM that is not erased when a device loses power or is turned off

O

operating system	base-level software that controls a computer, runs programs, interacts with users, and communicates with installed hardware or peripheral devices
------------------	---

P

PAL	Phase Alternation Line—one of the European video color standards; uses 625 lines per frame. <i>See also</i> NTSC.
-----	---

PCI	Peripheral Component Interconnect—a high-performance expansion bus architecture originally developed by Intel to replace ISA and EISA; it is achieving widespread acceptance as a standard for PCs and workstations and offers a theoretical maximum transfer rate of 132 Mbytes/s
PCLK	pixel clock signal—times the sampling of pixels on a video line
PCLKIN	pixel clock in signal
PFI	programmable function input
PGIA	programmable gain instrumentation amplifier
picture aspect ratio	the ratio of the active pixel region to the active line region; for standard video signals like RS-170 or CCIR, the full-size picture aspect ratio normally is 4/3 (1.33)
pixel	picture element—the smallest division that makes up the video scan line; for display on a computer monitor, a pixel's optimum dimension is square (aspect ratio of 1:1, or the width equal to the height)
pixel aspect ratio	the ratio between the physical horizontal size and the vertical size of the region covered by the pixel; an acquired pixel should optimally be square, thus the optimal value is 1.0, but typically it falls between 0.95 and 1.05, depending on camera quality
pixel clock	divides the incoming horizontal video line into pixels
pixel count	the total number of pixels between two HYSNCs; the pixel count determines the frequency of the pixel clock
PLL	phase-locked loop—circuitry that provides a very stable pixel clock that is referenced to another signal, for example, an incoming HSYNC signal
protocol	the exact sequence of bits, characters, and control codes used to transfer data between computers and peripherals through a communications channel
pts	points

R

RAM	random-access memory
real time	a property of an event or system in which data is processed as it is acquired instead of being accumulated and processed at a later time
region-of-interest	a hardware-programmable rectangular portion of the acquisition window
relative accuracy	a measure in LSB of the accuracy of an ADC; it includes all nonlinearity and quantization errors but does not include offset and gain errors of the circuitry feeding the ADC
resolution	the smallest signal increment that can be detected by a measurement system; resolution can be expressed in bits, in proportions, or in percent of full scale. For example, a system has 12-bit resolution, one part in 4,096 resolution, and 0.0244 percent of full scale.
ribbon cable	a flat cable in which the conductors are side by side
ROM	read-only memory
RS-170	the U.S. standard used for black-and-white television
RTSI bus	Real-Time System Integration Bus—the National Instruments timing bus that connects IMAQ and DAQ boards directly, by means of connectors on top of the boards, for precise synchronization of functions

S

s	seconds
scaling down circuitry	circuitry that scales down the resolution of a video signal
scatter-gather DMA	a type of DMA that allows the DMA controller to reconfigure on-the-fly
SRAM	static RAM

sync	tells the display where to put a video picture; the horizontal sync indicates the picture's left-to-right placement and the vertical sync indicates top-to-bottom placement
syntax	the set of rules to which statements must conform in a particular programming language
system RAM	RAM installed on a personal computer and used by the operating system, as contrasted with onboard RAM

T

transfer rate	the rate, measured in bytes/s, at which data is moved from source to destination after software initialization and set up operations; the maximum rate at which the hardware can operate
TRIG	trigger signal
trigger	any event that causes or starts some form of data capture
trigger control and mapping circuitry	circuitry that routes, monitors, and drives the external and RTSI bus trigger lines; you can configure each of these lines to start or stop acquisition on a rising or falling edge.
TTL	transistor-transistor logic

V

V	volts
VCO	voltage-controlled oscillator—an oscillator that changes frequency depending on a control signal; used in a PLL to generate a stable pixel clock
VI	Virtual Instrument—(1) a combination of hardware and/or software elements, typically used with a PC, that has the functionality of a classic stand-alone instrument (2) a LabVIEW software module (VI), which consists of a front panel user interface and a block diagram program
video line	a video line consists of a HSYNC, back porch, active pixel region, and a front porch

VSYNC vertical sync signal—the synchronization pulse generated at the beginning of each video field that tells the video monitor when to start a new field

VSYNCIN vertical sync in signal

W

white reference level the level that defines what is white for a particular video system
See also black reference level.

Numbers

+5V signal (table), 4-3
8-bit ADC and LUT, 3-3

A

acquisition and region-of-interest control, 3-4
acquisition modes, 3-10
acquisition window
 controlling, 3-6 to 3-8
 programming video parameters, 3-9
active line region, 3-7
active pixel region, 3-7
A/D conversion specifications, A-2
ADC, 8-bit, 3-3
Advanced Panel (1), *IMAQconf*, 5-10 to 5-12
Advanced Panel (2), *IMAQconf*, 5-12 to 5-13
Advanced Panel (3), *IMAQconf*, 5-13 to 5-14
antichrominance filter, 3-2
AutoSnap menu, *IMAQconf*, 5-4

B

Basic Settings panel, *IMAQconf*, 5-7 to 5-9
BNC connector
 avoiding VIDEO0 connection with 25-pin
 DSUB connector (note), 4-1
 pin assignments (figure), 4-1
 signal connections, 4-1
 VIDEO0 input, 2-2
board configuration. *See* configuration.
bulletin board support, C-1

C

cables
 custom cable specifications, B-1
 optional equipment, 1-5 to 1-6
 required cables, 1-2
Camera Acquisition panel, *IMAQconf*,
 5-9 to 5-10
Camera Type panel, *IMAQconf*, 5-6 to 5-7
composite synchronization. *See* CSYNC.
configuration, 2-1 to 2-4. *See also* installation.
 board configuration NVRAM, 3-5
 external CLK and synchronization input
 mode, 2-3
 parts locator diagram, 2-2
 setting up IMAQ system, 1-6 to 1-7
 Switch S1, 2-4
 VIDEO0 input mode, 2-2 to 2-3
configuration utility. *See* *IMAQconf*
 configuration utility.
CSYNC
 acquisition window control, 3-6
 CSYNC mux, 3-3
 external acquisition mode, 3-10
 external CLK and synchronization input
 mode, 3-3
CSYNCIN± signal (table), 4-3
CSYNCOUT signal (table), 4-3
custom cable specifications, B-1
customer communication, *xi*, C-1 to C-2

D

- delayed video acquisition, 3-6
- DIFF input mode
 - external CLK and synchronization input mode, 2-3
 - VIDEO0 input, 2-2 to 2-3
- Display** menu, IMAQconf, 5-4 to 5-5
- DMA controllers, 3-5
- documentation
 - conventions used in manual, *x*
 - National Instruments documentation, *xi*
 - organization of manual, *ix-x*
 - related documentation, *xi*
- DSUB port. *See* I/O connector.

E

- Edit** menu, IMAQconf, 5-2 to 5-3
- electronic support services, C-1 to C-2
- e-mail support, C-2
- environment specifications, A-4
- equipment, optional, 1-5 to 1-6
- external CLK and synchronization input mode, 2-3
- external connection specifications, A-2 to A-3
- external lock mode, 3-10

F

- fax and telephone support, C-2
- FaxBack support, C-2
- field, for interlaced video signal, 3-8
- FIFO buffer, 3-4
- File** menu, IMAQconf, 5-2
- formats supported, A-1
- frame
 - definition, 3-8
 - frame/field selection, 3-6

- FTP support, C-1
- functional overview, 3-1 to 3-5

G

- gain and offset circuitry, programmable, 3-2
- genlock and synchronization circuitry, 3-3
- GND signal (table), 4-3

H

- Hardware Lookup Table** panel, IMAQconf, 5-17 to 5-22
- hardware overview, 3-1 to 3-10
 - 8-bit ADC and LUT, 3-3
 - acquisition and region-of-interest control, 3-4
 - acquisition modes, 3-10
 - antichrominance filter, 3-2
 - block diagram, 3-2
 - board configuration NVRAM, 3-5
 - CSYNC mux, 3-3
 - FIFO buffer, 3-4
 - functional overview, 3-1 to 3-5
 - genlock and synchronization circuitry, 3-3
 - PCI interface, 3-5
 - PCLK, HSYNC, VSYNC mux, 3-4
 - pixel aspect ratio circuitry, 3-3
 - programmable gain and offset, 3-2
 - RTSI bus, 3-4
 - scatter-gather DMA controllers, 3-5
 - SRAM, 3-5
 - trigger control and mapping circuitry, 3-4
 - VCO and PLL circuitry, 3-3
 - video acquisition, 3-6 to 3-9
 - acquisition window control, 3-6 to 3-8
 - programming video parameters, 3-8 to 3-9
 - start/stop conditions, 3-6

- video mux, 3-2
- horizontal count, 3-7
- horizontal synchronization. *See* HSYNC.
- HSYNC
 - acquisition window control, 3-6
 - external CLK and synchronization input mode, 3-3
 - PCLK, HSYNC, VSYNC mux, 3-4
- HSYNCIN± signal (table), 4-2

I

- image storage, 5-25
- IMAQ Vision for G software, 1-3
- IMAQconf configuration utility, 5-1 to 5-25
 - Advanced Panel (1)**, 5-10 to 5-12
 - Advanced Panel (2)**, 5-12 to 5-13
 - Advanced Panel (3)**, 5-13 to 5-14
 - AutoSnap** menu, 5-4
 - Basic Settings** panel, 5-7 to 5-9
 - Camera Acquisition** panel, 5-9 to 5-10
 - Camera Type** panel, 5-6 to 5-7
 - Display** menu, 5-4 to 5-5
 - Edit** menu, 5-2 to 5-3
 - File** menu, 5-2
 - Hardware Lookup Table** panel, 5-17 to 5-22
- image storage, 5-25
- Interface** panel, 5-5 to 5-6
 - menu bar, 5-2 to 5-5
- Operating Mode** panel, 5-15 to 5-17
 - overview, 5-1
 - saving configuration settings, 5-24
- Scaling** menu, 5-3 to 5-4
 - testing the configuration, 5-24
- Video Sequence Recording** panel, 5-22 to 5-23
- installation. *See also* configuration.
 - procedure for, 2-4 to 2-5
 - setting up IMAQ system, 1-6 to 1-7

- unpacking the PCI-1408, 1-6
- Interface** panel, IMAQconf, 5-5 to 5-6
- interlaced video, 3-9
- internal pixel clock specifications, A-3
- I/O connector, 4-1 to 4-2
 - avoiding VIDEO0 connection with BNC connector, 4-1
 - custom cable specifications, B-1
 - pin assignments (figure), 4-2
 - signal descriptions (table), 4-2 to 4-3
 - VIDEO0 input, 2-2

J

- jumpers
 - W1
 - input mode control for VIDEO0 input, 2-2 to 2-3
 - required for BNC input (note), 4-1
 - W3, external CLK and synchronization input mode, 2-3

L

- LabVIEW software, 1-3
- line count
 - definition, 3-7
 - programmable pixel and line count, 3-8
- line region, active, 3-7
- lock mode, external, 3-10
- lookup table
 - 8-bit ADC and LUT, 3-3
 - Hardware Lookup Table** panel, IMAQconf, 5-17 to 5-22

M

- manual. *See* documentation.
- mapping circuitry, 3-4
- menu bar, IMAQconf, 5-2 to 5-5

N

National Instruments application software, 1-3
 NI-IMAQ driver software, 1-4 to 1-5
 NVRAM, 3-5

O

Operating Mode panel, `IMAQconf`,
 5-15 to 5-17

P

parts locator diagram, 2-2
 PCI interface
 overview, 3-5
 specifications, A-3 to A-4
 PCI-1408. *See also* hardware overview.
 features and overview, 1-1
 optional equipment, 1-5 to 1-6
 requirements for getting started, 1-1
 setting up IMAQ system, 1-6 to 1-7
 software programming choices, 1-3 to 1-5
 National Instruments application
 software, 1-3
 NI-IMAQ driver software, 1-4 to 1-5
 unpacking, 1-6
 PCLK
 acquisition window control, 3-6
 external CLK and synchronization input
 mode, 3-3
 internal pixel clock specifications, A-3
 PCLK, HSYNC, VSYNC mux, 3-4
 PCLKIN
 physical specifications, A-4
 picture aspect ratio, 3-7
 pin assignments
 BNC connector (figure), 4-1
 I/O connector (figure), 4-2
 pixel clock. *See* PCLK.

pixels

 active pixel region, 3-7
 horizontal count, 3-7
 line count, 3-7
 pixel aspect ratio, 3-7
 pixel aspect ratio circuitry, 3-3
 programmable pixel and line count, 3-8
 PLL circuitry, 3-3
 power requirements, A-4
 programmable gain and offset circuitry, 3-2
 programming video parameters. *See* video
 parameters, programming.

R

RAM

 board configuration NVRAM, 3-5
 SRAM, 3-5
 referenced single-ended (RSE) input mode.
 See RSE (referenced single-ended) input
 mode.
 region of interest
 control circuitry, 3-4
 programming video parameters, 3-9
 RSE (referenced single-ended) input mode
 external CLK and synchronization input
 mode, 2-3
 VIDEO0 input, 2-2 to 2-3
 RTSI bus, 3-4

S

S1 switch, 2-4
 saving configuration settings, 5-24
Scaling menu, `IMAQconf`, 5-3 to 5-4
 scaling-down circuitry, 3-9
 scatter-gather DMA controllers, 3-5
 signal connections, 4-1 to 4-3
 BNC connector, 4-1
 external connection specifications,
 A-2 to A-3

- I/O connector, 4-1 to 4-2
 - pin assignments (figure), 4-2
 - signal descriptions (table), 4-2 to 4-3
- software control of video acquisition, 3-6
- software programming choices, 1-3 to 1-5
 - National Instruments application software, 1-3
 - NI-IMAQ driver software, 1-4 to 1-5
- specifications, A-1 to A-4
 - A/D conversion, A-2
 - environment, A-4
 - external connections, A-2 to A-3
 - formats supported, A-1
 - internal pixel clock, A-3
 - PCI interface, A-3 to A-4
 - physical, A-4
 - power requirements, A-4
 - video input, A-1 to A-2
- SRAM, 3-5
- standard acquisition mode, 3-10
- start/stop conditions, video acquisition, 3-6
- Switch S1, 2-4
- synchronization circuitry, 3-3
- synchronization input mode, 2-3
- system requirements, 1-2

T

- technical support, C-1 to C-2
- telephone and fax support, C-2
- testing your configuration, 5-24
- TRIG<3..0>
- trigger control
 - trigger control and mapping circuitry, 3-4
 - video acquisition, 3-6

V

- VCO and PLL circuitry, 3-3
- vertical synchronization. *See* VSYNC.

- video acquisition, 3-6 to 3-9
 - acquisition window control, 3-6 to 3-8
 - programming video parameters, 3-8 to 3-9
 - start/stop conditions, 3-6
- video input specifications, A-1 to A-2
- video line, 3-7
- video mux, 3-2
- video parameters, programming, 3-8 to 3-9
 - acquisition window, 3-9
 - interlaced video, 3-9
 - programmable pixel and line count, 3-8
 - region of interest, 3-9
 - scaling down, 3-9

Video Sequence Recording panel,

- IMAQconf, 5-22 to 5-23

VIDEO0

- avoiding 25-pin DSUB connector with BNC connection (note), 4-1
- description (table), 4-2
- input mode, 2-2 to 2-3

VIDEO<3..1> \pm signal (table), 4-2

VSYNC

- acquisition window control, 3-6
- external CLK and synchronization input mode, 3-3
- PCLK, HSYNC, VSYNC mux, 3-4

VSYNCIN \pm signal (table), 4-3

W

- W1 jumper
 - input mode control for VIDEO0 input, 2-2 to 2-3
 - required for BNC input (note), 4-1
- W3 jumper, external CLK and synchronization input mode, 2-3