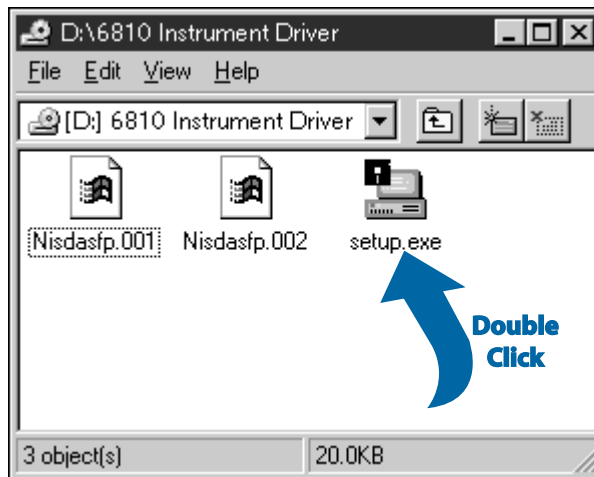


# Setup and Test the PCI-6810

## 1 Install Your Software

Insert  
CD



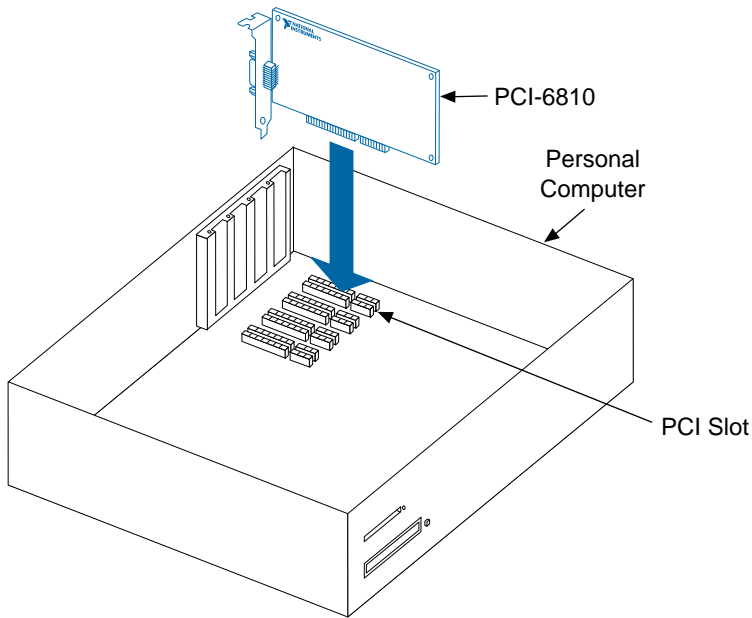
**Need more information?**  
See *Getting Started with Your PCI/PXI-6810 Serial Data Analyzer*.

# 2 Install Your PCI-6810 Device



**Caution**

*Turn the power off before installing your hardware.*



**Note**

*Follow the instructions of your computer documentation to install the PCI-6810 device.*

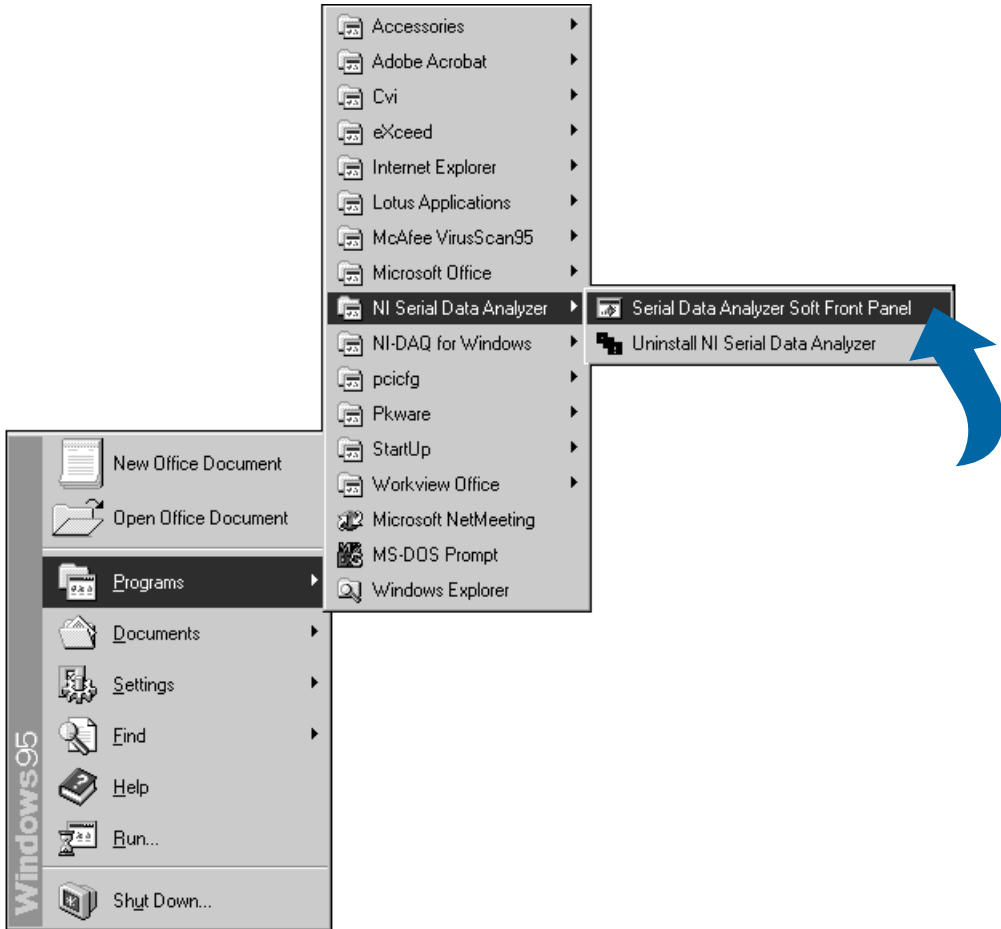


**Need more information?**

*See [Getting Started with Your PCI/PXI-6810 Serial Data Analyzer](#).*

# 3

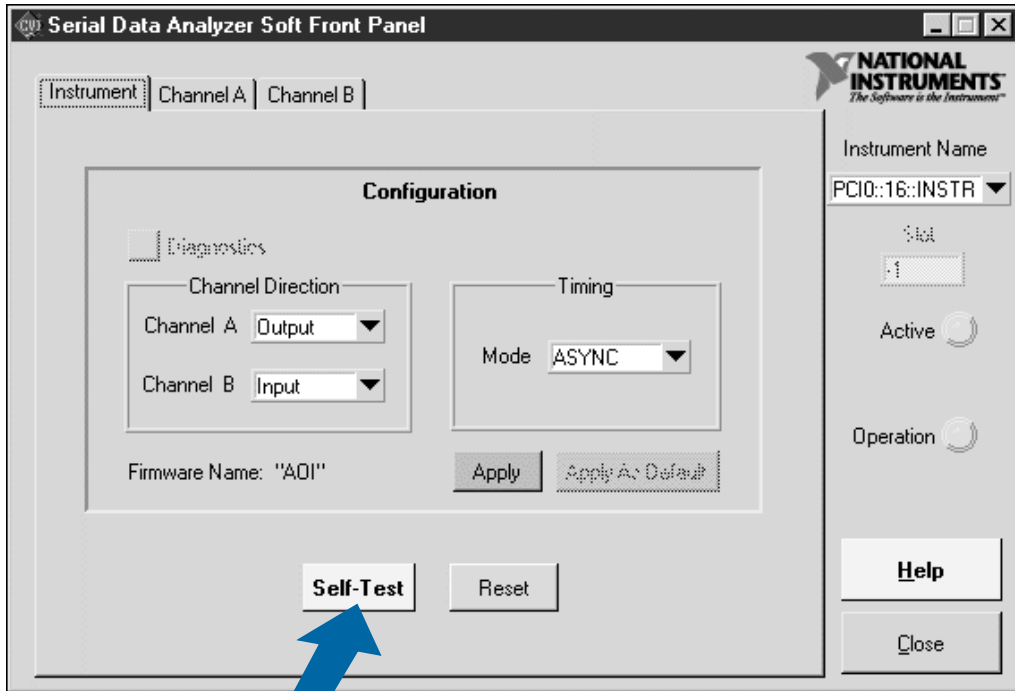
## Run the Soft Front Panel



**Need more information?**

**See *Getting Started with Your PCI/PXI-6810 Serial Data Analyzer*.**

# 4 Run the Self-Test



Single  
Click



**Need more information?**

**See *Getting Started with Your PCI/PXI-6810 Serial Data Analyzer*.**

