

COMPREHENSIVE SERVICES

We offer competitive repair and calibration services, as well as easily accessible documentation and free downloadable resources.

SELL YOUR SURPLUS

We buy new, used, decommissioned, and surplus parts from every NI series. We work out the best solution to suit your individual needs.


 Sell For Cash  Get Credit  Receive a Trade-In Deal

OBSOLETE NI HARDWARE IN STOCK & READY TO SHIP

We stock **New**, **New Surplus**, **Refurbished**, and **Reconditioned** NI Hardware.



Bridging the gap between the manufacturer and your legacy test system.

 1-800-915-6216

 www.apexwaves.com

 sales@apexwaves.com

All trademarks, brands, and brand names are the property of their respective owners.

Request a Quote

 **CLICK HERE**

PCIe-GPIB-LP



June 2008

Notice of Board Change—NI PCIe-GPIB

Dear National Instruments Customer,

The PCI Express GPIB controller in this kit is different from those you may have ordered from National Instruments in the past. The new NI PCIe-GPIB and the low profile version, the NI PCIe-GPIB LP, have the same functionality and performance as the previous version, but with lower power consumption, a wider operating temperature range, and a smaller size, as shown in the following figures.

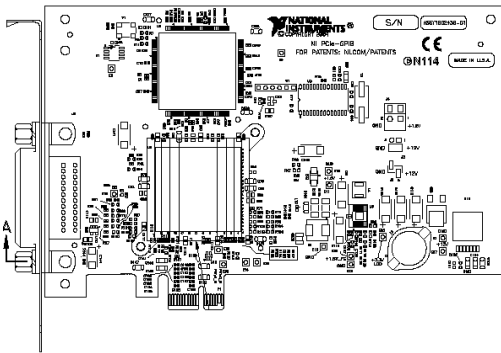


Figure 1. Previous NI PCIe-GPIB

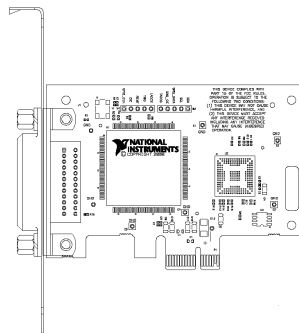


Figure 2. New NI PCIe-GPIB

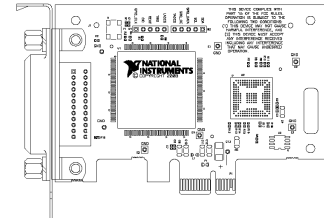


Figure 3. New NI PCIe-GPIB LP

The specifications for the previous and new NI PCIe-GPIB controllers are as follows*:

Specification	Previous NI PCIe-GPIB	New NI PCIe-GPIB and NI PCIe-GPIB LP
Dimensions	16.8 × 11.1 cm (6.6 × 4.4 in.)	9.8 × 6.9 cm (3.8 × 2.7 in.)
Power consumption (typical)	970 mA @ 3.3 V = 3.2 W 124 mA @ 12 V = 1.5 W	320 mA @ 3.3 V = 1.1 W (12 V rail not used)
Ambient temperature range	0 to 35 °C	0 to 55 °C
Low-profile option available	No	Yes

* Specifications not listed here have not changed on the new boards.

For more information about National Instruments products, visit ni.com.

Sincerely,

NI Customer Service

customer.service@ni.com

(800) 433-3488

National Instruments, NI, ni.com, and LabVIEW are trademarks of National Instruments Corporation. Refer to the *Terms of Use* section on ni.com/legal for more information about National Instruments trademarks. Other product and company names mentioned herein are trademarks or trade names of their respective companies.