

COMPREHENSIVE SERVICES

We offer competitive repair and calibration services, as well as easily accessible documentation and free downloadable resources.

SELL YOUR SURPLUS

We buy new, used, decommissioned, and surplus parts from every NI series. We work out the best solution to suit your individual needs.

 Sell For Cash  Get Credit  Receive a Trade-In Deal

OBSOLETE NI HARDWARE IN STOCK & READY TO SHIP

We stock **New**, **New Surplus**, **Refurbished**, and **Reconditioned** NI Hardware.



Bridging the gap between the manufacturer and your legacy test system.

 1-800-915-6216

 www.apexwaves.com

 sales@apexwaves.com

All trademarks, brands, and brand names are the property of their respective owners.

Request a Quote

 **CLICK HERE**

SCXI-1181

SCXI-1181K Custom Module Assembly

This guide documents the contents of your SCXI-1181K custom module assembly kit and includes illustrations of the circuit board specifications and the module assembly.

Introduction

The SCXI-1181K custom module assembly kit includes the unassembled components you need to build a custom SCXI module, but not the actual circuit board. All of the mechanical components of an SCXI module, such as the metal enclosure, front and back panels, and connectors, are included.

The SCXI-1181K is intended for developers of custom SCXI modules who design and lay out custom circuit boards for modules. For prototyping or building low-volume custom SCXI modules, the fully assembled SCXI-1181 breadboard module is more appropriate.

What Your Kit Should Contain

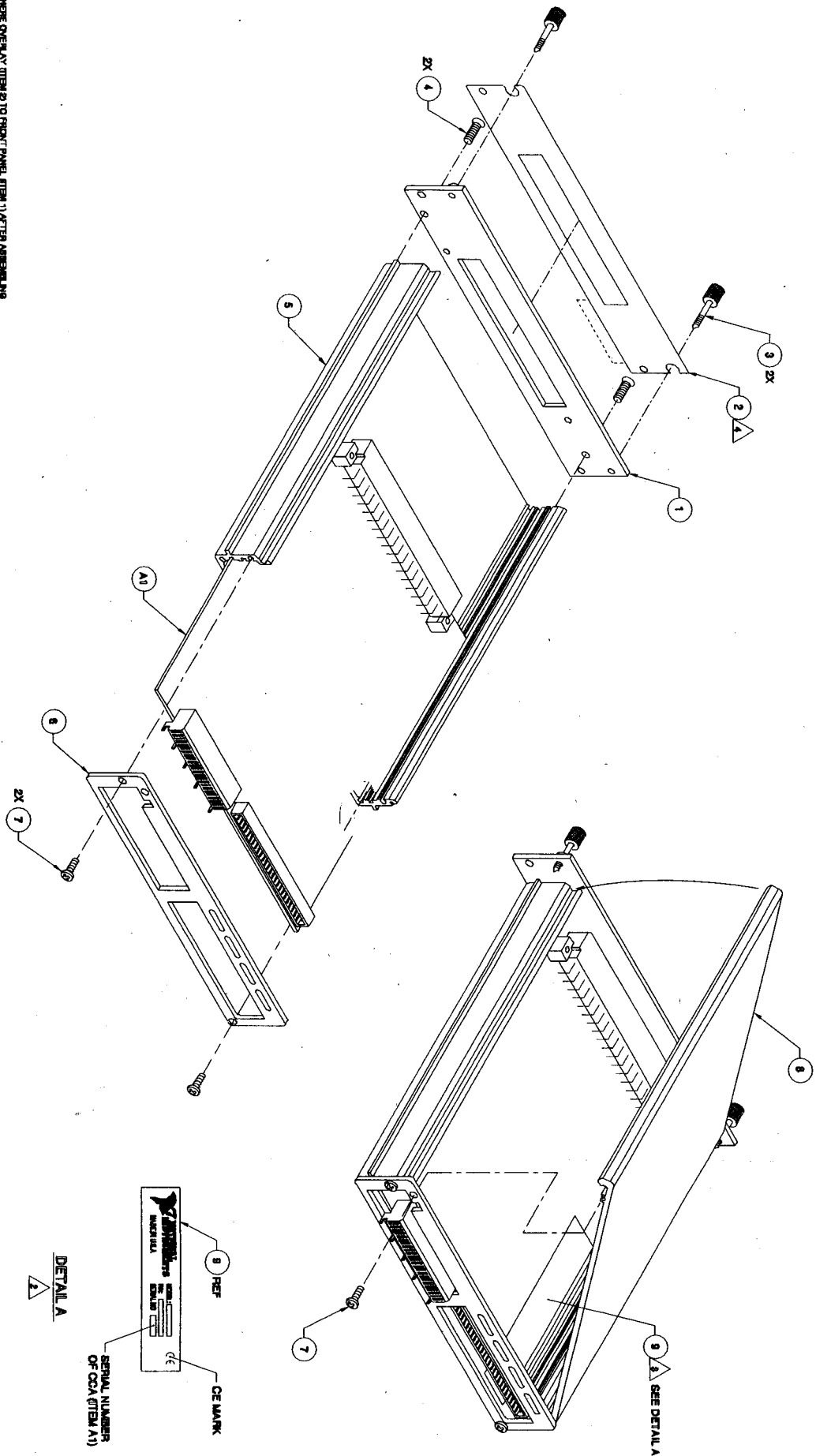
The SCXI-1181K custom module assembly kit (part number 776572-81K) contains the components listed in the following table. The reference numbers in the left column of the table refer to callouts in Figure 1.

Reference Number	Component	Quantity
1	Module front panel	1
2	Module front panel overlay	1
3	Thumb screw, 2.5 mm	2
4	#4 x 5/16 in. Phillips screw, flat head	2
5	Enclosure base	1
6	Module rear panel	1
7	#4 x 5/16 in. Phillips screw, pan head	3
8	Enclosure cover	1
9	Identification label	1
J1	3 x 32 position Deutsche Industrie Norme connector header	1
J2	50 position connector header	1
P1	4 x 6, 2 mm connector, push-fit	4
—	Installation guide	1

Refer to the reference numbers of the components in the previous table and the corresponding components in Figure 1 for module assembly.

Note: *The four P1 connectors have a push-fit peg. Secure the P1 connectors to the printed wire circuit board (PWB) by pushing the connector onto the PWB so that the middle peg of the connector presses into the 0.081 in. hole in the PWB. National Instruments recommends using the push-fit peg hand tool (part number CTHT-200) manufactured by ITT Cannon for this installation. You can contact ITT Cannon at (800) 845-7000.*

Figure 2 shows the SCXI module PWB outline.



1. ASSEMBLE OVER ITEM 2 TO FRONT PANEL (ITEM 1) AFTER ASSEMBLING FRONT PANEL TO BASE (ITEM 2).
2. ASSEMBLE LABEL (ITEM 9) TO OUTSIDE OF REAR PANEL BASE (ITEM 10) IN APPROXIMATELY 25 DEGREES FROM REAR PANEL (ITEM 3).
3. MARK LABEL (ITEM 9) AS SHOWN IN DETAIL A, USING PERMANENT BLACK INK.

1. ASSEMBLE PER PARTS LIST.

NOTES: UNLESS OTHERWISE SPECIFIED.

Figure 1. Module Assembly Reference

REVISIONS		
DATE	DESCRIPTION	APPROVED
1	RELEASED	

This document contains confidential and proprietary information which is the property of the copyright owner and is loaned to the recipient for use only. It is not to be reproduced, stored in a retrieval system, or transmitted in any form or by any means, electronic, mechanical, photocopying, recording, or by any information storage and retrieval system, without written permission of the copyright owner.

1. The recipient shall not make any copy of this document or its contents for the manufacture or sale of goods or services.

2. The recipient shall not use the information contained herein for the manufacture or sale of goods or services.

3. The recipient shall not use the information contained herein for the manufacture or sale of goods or services.

©COPYRIGHT 1983 NATIONAL INSTRUMENTS CORPORATION. ALL RIGHTS RESERVED.

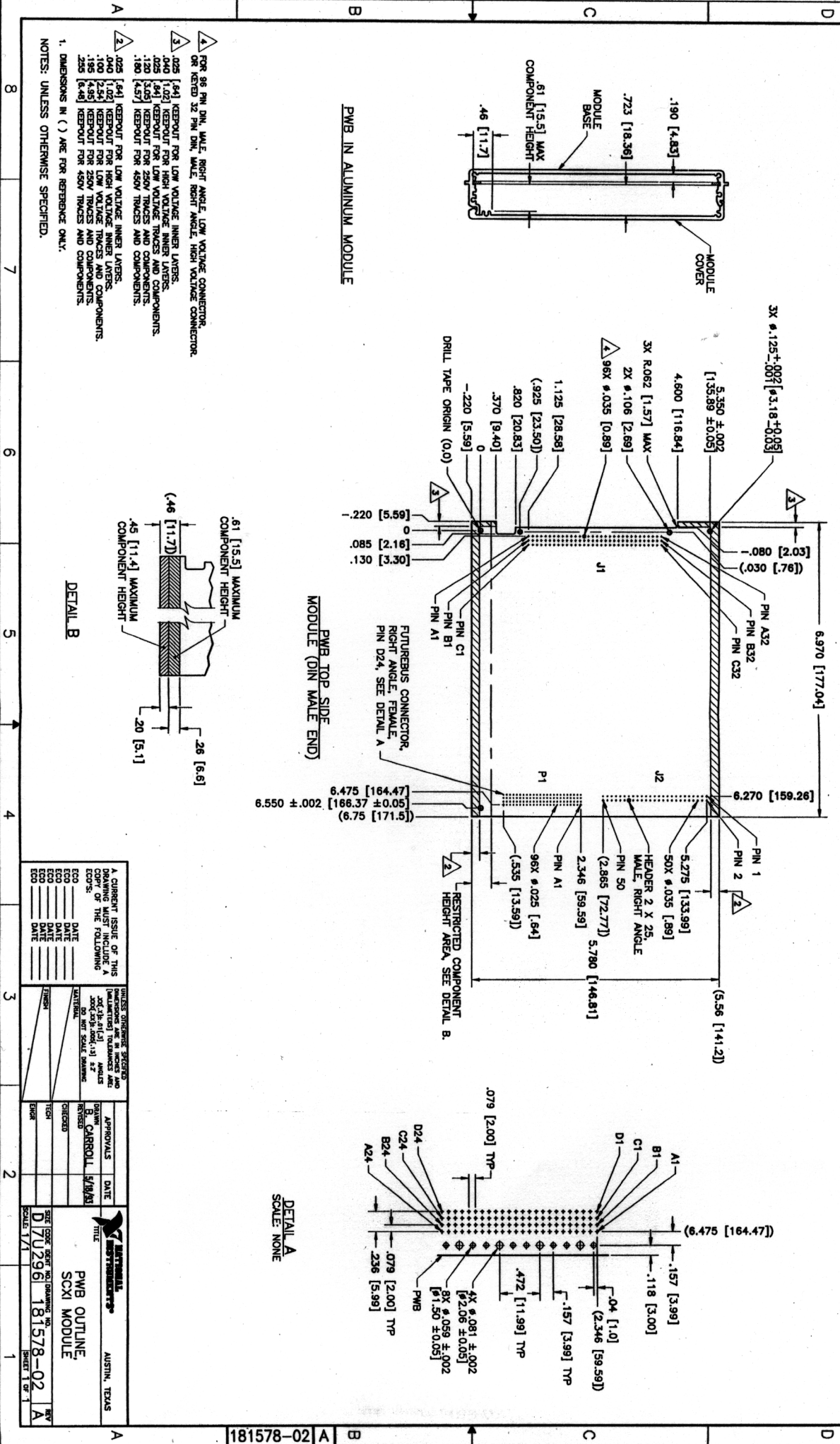


Figure 2. SCXI Module PWB Outline