

COMPREHENSIVE SERVICES

We offer competitive repair and calibration services, as well as easily accessible documentation and free downloadable resources.

SELL YOUR SURPLUS

We buy new, used, decommissioned, and surplus parts from every NI series. We work out the best solution to suit your individual needs.

 Sell For Cash  Get Credit  Receive a Trade-In Deal

OBSOLETE NI HARDWARE IN STOCK & READY TO SHIP

We stock **New**, **New Surplus**, **Refurbished**, and **Reconditioned** NI Hardware.



Bridging the gap between the manufacturer and your legacy test system.

 1-800-915-6216

 www.apexwaves.com

 sales@apexwaves.com

All trademarks, brands, and brand names are the property of their respective owners.

Request a Quote

 **CLICK HERE**

USB-7855

GETTING STARTED GUIDE

NI USB-7855R

R Series for USB Multifunction RIO with Kintex-7 70T FPGA

Français	Deutsch	日本語	한국어	简体中文
ni.com/manuals				

This document explains how to install and configure National Instruments NI USB-7855R.

Safety Guidelines



Caution Do not operate the NI USB-7855R in a manner not specified in this user manual. Product misuse can result in a hazard. You can compromise the safety protection built into the product if the product is damaged in any way. If the product is damaged, return it to National Instruments for repair.

Electromagnetic Compatibility Guidelines

This product was tested and complies with the regulatory requirements and limits for electromagnetic compatibility (EMC) as stated in the product specifications. These requirements and limits are designed to provide reasonable protection against harmful interference when the product is operated in its intended operational electromagnetic environment.

This product is intended for use in residential, commercial, and industrial locations. However, harmful interference may occur in some installations or when the product is connected to a peripheral device or a test object. To minimize interference with radio and television reception and prevent unacceptable performance degradation, install and use this product in strict accordance with the instructions in the product documentation.

Furthermore, any changes or modifications to the product not expressly approved by National Instruments could void your authority to operate it under your local regulatory rules.



Caution To ensure the specified EMC performance, you must install the included snap-on ferrite bead onto the DC power cord of the power supply as described in this document.



Caution To ensure the specified EMC performance, operate this product only with shielded cables and accessories.

Unpacking the Kit



Caution To prevent electrostatic discharge from damaging the device, ground yourself using a grounding strap or by holding a grounded object, such as your computer chassis.

1. Touch the antistatic package to a metal part of the computer chassis.
2. Remove the device from the package and inspect the device for loose components or any other sign of damage.



Caution Never touch the exposed pins of connectors.

Notify NI if the device appears damaged in any way. Do not install a damaged device.

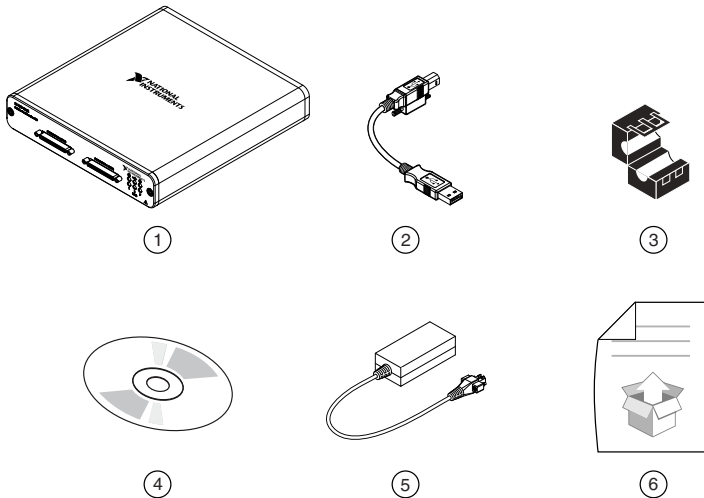
3. Unpack any other items and documentation from the kit.

Store the device in the antistatic package when the device is not in use.

Verifying the Kit Contents

Verify the following components are in your kit.

Figure 1. Kit Contents for the NI USB-7855R



-
1. NI USB-7855R Module
 2. USB Cable
 3. Ferrite Bead

4. NI-RIO Media
 5. Power Supply
 6. Getting Started Guide
-

Installing Software

You must be an Administrator to install NI software and devices on your computer. Before connecting the hardware, install the software in the following order.

1. Install the driver software using either the media included in your kit or by downloading the latest version from ni.com/downloads.
2. Follow the instructions in the installation prompts.
 - a) Windows 8/7/Vista users may see access and security messages during installation. Accept the prompts to complete the installation.
3. When the installer completes, a dialog box asks if you want to restart, shut down, or restart later. Select **Restart**.

Installing the Hardware

Connecting the USB Cable

USB modules can be connected directly to the host PC, to a powered USB hub, or to an NI PXI or PXI Express chassis featuring a USB port.

1. Connect the USB cable to the NI USB-7855R using the cable device port.
2. Connect the other end of the USB cable to the host PC, powered hub, or chassis.
3. Use the jackscrew on the locking USB cable to securely attach the cable to the NI USB-7855R.

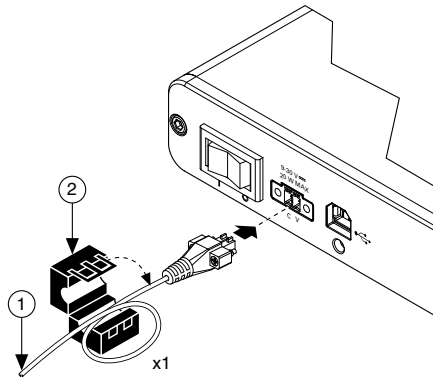
Powering the Module



Caution To ensure the specified EMC performance, install the included snap-on ferrite bead onto the DC power cord of the power supply in accordance with the instructions provided.

1. Install the ferrite bead by opening the housing and looping the power supply once through the center of the bead. Ensure the ferrite bead is as close to the end of the cable as practical.
2. Close the ferrite bead until the locking tabs engage securely.

Figure 2. Installing the Ferrite Bead



1. Power Supply
2. Ferrite

3. Connect the power supply to the NI USB-7855R.
4. Connect the other end of the power supply to a user-supplied power cord.
5. Connect the user-supplied power cord to the appropriate power source.
6. Turn the power switch on the NI USB-7855R to the on position.

USB Device Security Cable Slot

The security cable slot allows you to attach an optional laptop lock to your NI USB-7855R.



Note The security cable is designed to act as a deterrent, but might not prevent the device from being mishandled or stolen. For more information, refer to the documentation that accompanied the security cable.



Note The security cable slot on the USB device might not be compatible with all laptop lock cables.

Refer to the documentation that accompanied the security cable for installation instructions.

Verifying Hardware Installation

You can verify that the system recognizes the USB device by using Measurement & Automation Explorer (MAX).

1. Launch MAX by navigating to **Start»All Programs»National Instruments»MAX** or by clicking the MAX desktop icon.
2. Expand **Devices and Interfaces**.
3. Verify that the device appears under **USB Devices**.

If the device does not appear, press <F5> to refresh the view in MAX. If the device does not appear after refreshing the view, visit ni.com/support for troubleshooting information.

Connecting Signals

The following figure shows the I/O connector pin assignments and locations for the NI USB-7855R.

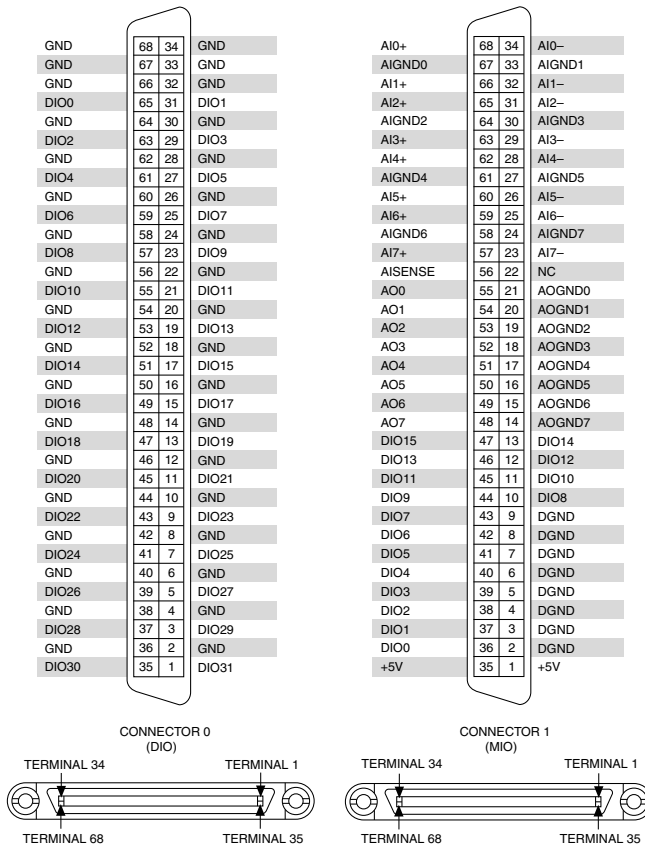


Caution To ensure the specified EMC performance, operate this product only with shielded cables and accessories.



Note NI is not liable for connections that exceed any of the maximum ratings of input or output signals on the NI USB-7855R and on the computer chassis. For the maximum input and output ratings for each signal, refer to the *NI USB-7855R Specifications*, available at ni.com/manuals.

Figure 3. NI USB-7855R Connector Pin Assignments and Locations

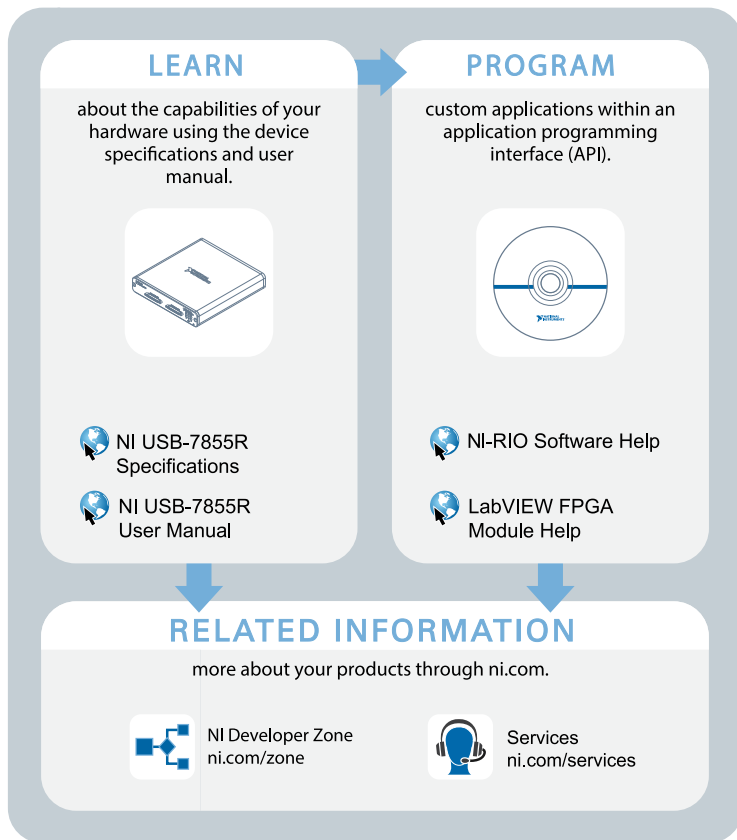



The +5 V terminals on the I/O connector supply +5 V referenced to GND. Use these terminals to power external circuitry. The NI USB-7855R is protected from overvoltage and overcurrent

conditions. Refer to the *NI USB-7855R User Manual*, available at ni.com/manuals, for more information.

Where to Go Next

Refer to the following figure for information about other product tasks and associated resources for those tasks.



 Located online at ni.com/manuals

Where to Go for Support

The National Instruments Web site is your complete resource for technical support. At ni.com/support you have access to everything from troubleshooting and application development self-help resources to email and phone assistance from NI Application Engineers.

National Instruments corporate headquarters is located at 11500 North Mopac Expressway, Austin, Texas, 78759-3504. National Instruments also has offices located around the world to help address your support needs. For telephone support in the United States, create your service request at ni.com/support and follow the calling instructions or dial 512 795 8248. For telephone support outside the United States, visit the Worldwide Offices section of ni.com/global to access the branch office Web sites, which provide up-to-date contact information, support phone numbers, email addresses, and current events.

Refer to the *NI Trademarks and Logo Guidelines* at ni.com/trademarks for information on National Instruments trademarks. Other product and company names mentioned herein are trademarks or trade names of their respective companies. For patents covering National Instruments products/technology, refer to the appropriate location: **Help»Patents** in your software, the `patents.txt` file on your media, or the *National Instruments Patent Notice* at ni.com/patents. You can find information about end-user license agreements (EULAs) and third-party legal notices in the readme file for your NI product. Refer to the *Export Compliance Information* at ni.com/legal/export-compliance for the National Instruments global trade compliance policy and how to obtain relevant HTS codes, ECCNs, and other import/export data.

© 2013 National Instruments. All rights reserved.

375941B-01 Nov13