

COMPREHENSIVE SERVICES

We offer competitive repair and calibration services, as well as easily accessible documentation and free downloadable resources.

SELL YOUR SURPLUS

We buy new, used, decommissioned, and surplus parts from every NI series. We work out the best solution to suit your individual needs.

 Sell For Cash  Get Credit  Receive a Trade-In Deal

OBSOLETE NI HARDWARE IN STOCK & READY TO SHIP

We stock **New**, **New Surplus**, **Refurbished**, and **Reconditioned** NI Hardware.



Bridging the gap between the manufacturer and your legacy test system.

 1-800-915-6216

 www.apexwaves.com

 sales@apexwaves.com

All trademarks, brands, and brand names are the property of their respective owners.

Request a Quote

 **CLICK HERE**

USRP-2921

NI USRP and LabVIEW Communications System Design Suite

Universal Software Radio Peripheral

This document explains how to install, configure, and test your NI universal software radio peripheral (USRP) device in conjunction with the LabVIEW Communications System Design Suite.

NI USRP hardware includes the following devices:

- NI 2920/2921/2922
- NI 2930/2932
- NI 2940R/2942R/2943R
- NI 2950R/2952R/2953R

Contents

Electromagnetic Compatibility Guidelines.....	2
Editions of Software.....	3
Unpacking the Kit.....	3
Preparing the Environment.....	3
Other Required Items.....	4
Optional Items.....	5
Verifying the Kit Contents.....	5
Installing LabVIEW Communications System Design Suite.....	6
Installing NI 29xx Devices.....	6
Configuring NI 29xx Devices.....	7
Setting Up the Network (Ethernet Only).....	7
Using the Optional NI ExpressCard Slot - MXI Express Interface Kit for USRP RIO to Connect to a Laptop Computer.....	11
Using the Optional NI PCIe - MXI Express Interface Kit for USRP RIO to Connect to a Desktop Computer.....	12
Using the Optional NI PXIe - MXI Express Interface Kit for USRP RIO to Connect to a PXI Express Chassis.....	12
Device Firmware and FPGA Images.....	13
Updating USRP N2xx/NI 29xx Firmware and FPGA Images.....	13

Programming the NI 29xx.....	16
Using the USRP RIO Sample Projects.....	16
Modifying The Sample Project To Run On Your Hardware.....	16
Using Examples.....	18
Troubleshooting.....	18
Device Troubleshooting.....	18
Network Troubleshooting.....	18
Front Panels, Back Panels, and Connectors.....	20
NI USRP-2920.....	20
NI USRP-2921.....	22
NI USRP-2922.....	24
NI USRP-2930.....	26
NI USRP-2932.....	28
NI USRP-2940R.....	30
NI USRP-2942R.....	34
NI USRP-2943R.....	37
NI USRP-2950R.....	41
NI USRP-2952R.....	45
NI USRP-2953R.....	49
Worldwide Support and Services.....	53

Electromagnetic Compatibility Guidelines

This product was tested and complies with the regulatory requirements and limits for electromagnetic compatibility (EMC) stated in the product specifications. These requirements and limits provide reasonable protection against harmful interference when the product is operated in the intended operational electromagnetic environment.

This product is intended for use in industrial locations. However, harmful interference may occur in some installations, when the product is connected to a peripheral device or test object, or if the product is used in residential or commercial areas. To minimize interference with radio and television reception and prevent unacceptable performance degradation, install and use this product in strict accordance with the instructions in the product documentation.

Furthermore, any changes or modifications to the product not expressly approved by National Instruments could void your authority to operate it under your local regulatory rules.



Caution To ensure the specified EMC performance, operate this product only with shielded cables and accessories.



Caution To ensure the specified EMC performance, the length of all I/O cables except for that connected to the GPS antenna input must be no longer than 3 m (10 ft).



Caution This product is not approved or licensed for transmission over the air using an antenna. As a result, operating this product with an antenna may violate local laws. Ensure that you are in compliance with all local laws before operating this product with an antenna.

Editions of Software

In this document, you may see terms or tools that do not apply to the edition of the software you are using because this document covers both the Software and Suite editions.

- LabVIEW Communications System Design Software—Paired with NI USRP hardware in the default personality, the Software edition turns a standard PC into a wireless prototyping platform.
- LabVIEW Communications System Design Suite—Paired with NI USRP RIO devices, the Suite edition allows you to design and prototype communications systems by programming both standard processors and FPGAs. This software also works with NI USRP and NI FlexRIO hardware.

Unpacking the Kit



Caution To prevent electrostatic discharge (ESD) from damaging the device, ground yourself using a grounding strap or by holding a grounded object, such as your computer chassis.

1. Touch the antistatic package to a metal part of the computer chassis.
2. Remove the device from the package and inspect the device for loose components or any other sign of damage.



Caution Never touch the exposed pins of connectors.

Notify NI if the device appears damaged in any way. Do not install a damaged device.

3. Unpack any other items and documentation from the kit.

Store the device in the antistatic package when the device is not in use.

Preparing the Environment

Ensure that the environment you are using the NI USRP device in meets the following specifications.

Operating temperature.....-40 °C to 70 °C

Operating humidity.....10% to 90% relative humidity, noncondensing

Pollution Degree.....2

Maximum altitude.....2,000 m

Indoor use only.



Note Refer to the NI USRP device specifications on ni.com/manuals for complete specifications.



Caution Do not operate the device in a manner not specified in this document. Product misuse can result in a hazard. You can compromise the safety protection built into the product if the product is damaged in any way. If the product is damaged, return it to National Instruments for repair.

Other Required Items

In addition to the kit contents, you must provide the following additional items:

- Computer with available gigabit Ethernet interface.
- An MXI Express interface card, such as the NI PCIe-8371, if you plan to connect to the device using PCI Express.
- One or more of the recommended antennas shown in the following table.

Table 1. Recommended Antennas

Device	Antenna	NI Part Number
NI USRP-2920/2922/2930/2932/2940R/2942R/2950R/2952R	VERT 400— 144 MHz, 400 MHz, and 1,200 MHz tri- band vertical antenna	781915-01
NI USRP-2921/2922/2932/2942R/2943R/2952R/2953R	VERT 2450— 2.4 GHz to 2.48 GHz and 4.9 GHz to 5.9 GHz to 5.9 GHz dual- band vertical antenna	781913-01

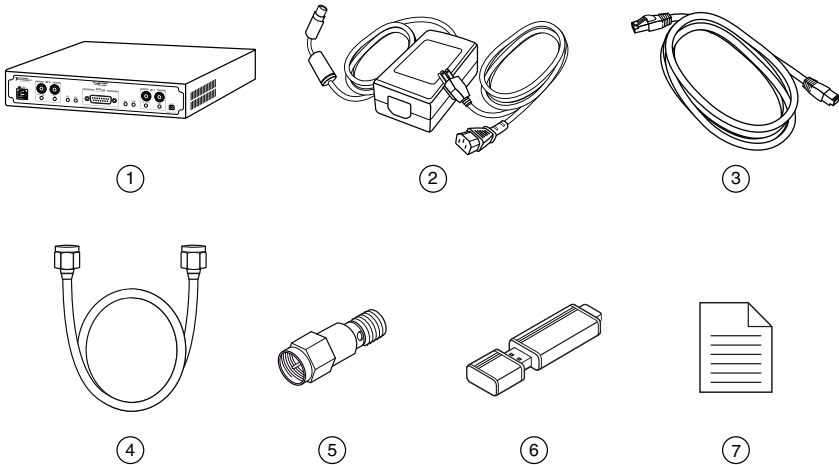


Caution This product is not approved or licensed for transmission over the air using an antenna. As a result, operating this product with an antenna may violate local laws. Ensure that you are in compliance with all local laws before operating this product with an antenna.

Optional Items

- (For NI 292x/293x devices only) NI USRP-29xx multiple-input multiple-output (MIMO) synchronization and data-transfer cable, available at <http://www.ni.com/>, to synchronize clock sources
- Additional SMA (m)-to-SMA (m) cables to connect both channels with external devices under test (DUTs) or to use the REF IN and PPS IN signals
- GPS antenna for devices with GPS disciplined oscillator (GPSDO) support
- NI PCIe - MXI Express Interface Kit for USRP RIO to connect to a desktop computer
- NI ExpressCard Slot - MXI Express Interface Kit for USRP RIO to connect to a laptop computer
- NI PXIe - MXI Express Interface Kit for USRP RIO to connect to a PXI Express chassis

Verifying the Kit Contents



-
- | | |
|---|--|
| 1. NI 29xx Device | 5. 30 dB SMA Attenuator |
| 2. AC/DC Power Supply and Power Cable | 6. USB Software Media |
| 3. Shielded Ethernet Cable (included only in NI 292x/293x kits) | 7. NI USRP and LabVIEW Comms Getting Started Guide (this document) |
| 4. SMA (m)-to-SMA (m) cable | |
-



Caution If you directly connect or cable a signal generator to your device, or if you connect multiple NI USRP devices together, you must connect a 30 dB attenuator to the RF input (RX1 or RX2) of each receiving NI USRP device.

Installing LabVIEW Communications System Design Suite

You must be an Administrator to install NI software on your computer.

1. Insert the USB software media into your computer. The installer should open automatically.

If the installation window does not appear, navigate to the drive, double-click it, and double-click `autorun.exe`.

2. Follow the instructions in the installation prompts.



Note Windows users may see access and security messages during installation. Accept the prompts to complete the installation.

3. When the installer completes, select **Restart** in the dialog box that prompts you to restart, shut down, or restart later.

Installing NI 29xx Devices

Install all the software you plan to use before you install the hardware.



Note The NI USRP device connects to a host computer using either a standard gigabit Ethernet interface or an MXI Express device. Refer to the documentation for your gigabit Ethernet interface or your MXI Express device for installation and configuration instructions.

1. Power off the computer if necessary.
 - MXI Express connection—Power off the computer and the NI USRP device. Power on the NI USRP device before powering on your computer.
 - Ethernet connection—Keep the computer powered on.
2. Attach the antenna or cable to the front panel terminals of the NI USRP device as desired.
3. Use the Ethernet cable or MXI Express interface card to connect the NI USRP device to the computer. For maximum throughput over Ethernet, NI recommends that you connect each NI USRP device to its own dedicated gigabit Ethernet interface on the host computer.



Note Do not connect a single NI USRP device to both MXI Express and Ethernet.

4. Connect the AC/DC power supply to the NI USRP device.
5. Plug the power supply into a wall outlet. Press the PWR button. If your computer was powered off, you can now power on the computer. Windows automatically recognizes the NI USRP device.

Configuring NI 29xx Devices

Setting Up the Network (Ethernet Only)

The device communicates with a host computer over gigabit Ethernet. Set up the network to enable communication with the device.



Note The IP addresses for the host computer and each connected NI USRP device must be unique.

Configure the Host Ethernet Interface with a Static IP Address

The default IP address for the NI 29xx is 192.168.10.2. You must configure the host Ethernet interface with a static IP address on the same subnet as the connected device to enable communication, as shown in the following table.

Table 2. Static IP Addresses

Component	Address
Host Ethernet interface static IP address	192.168.10.1
Host Ethernet interface subnet mask	255.255.255.0
Default NI USRP device IP address	192.168.10.2



Note NI-USRP uses user datagram protocol (UDP) broadcast packets to locate the device. On some systems, the firewall blocks UDP broadcast packets. NI recommends that you change or disable the firewall settings to allow communication with the device.



Tip Make sure the host computer uses a static IP address. You may need to modify the network settings for the local area connection using the Control Panel on the host computer. Specify the static IP address in the **Properties** page for Internet Protocol Version 4 (TCP/IPv4).

Related Information

[Changing the IP Address](#) on page 7

Changing the IP Address

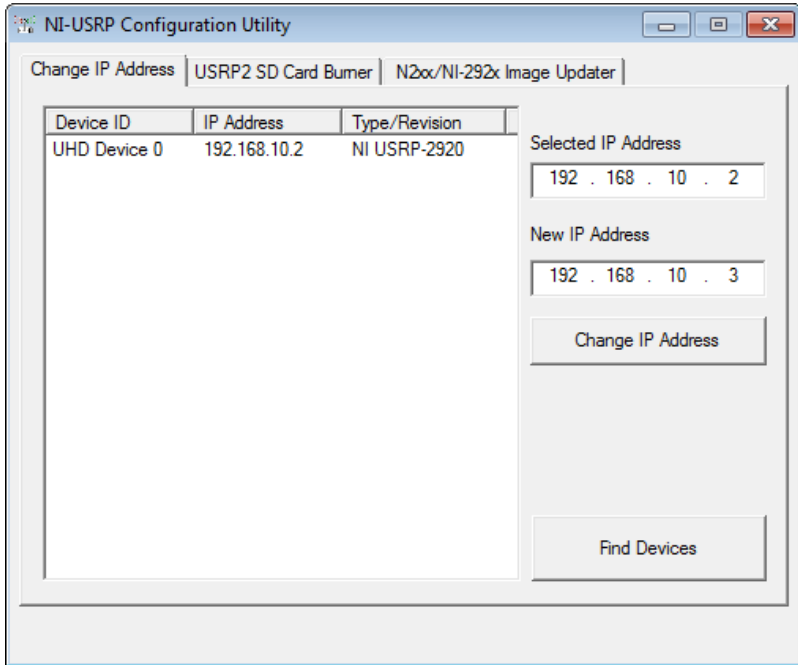
To change the NI 29xx device IP address, you must know the current address of the device, and you must configure the network.

1. Verify that your device is powered on and connected to your computer using the gigabit Ethernet interface.
2. Select **Start»All Programs»National Instruments»NI-USRP»NI-USRP Configuration Utility** to open the NI-USRP Configuration Utility.

3. Select the **Change IP Address** tab of the utility.
Your device should appear in the list on the left side of the tab.
4. In the list, select the device for which you want the change the IP address.
If you have multiple devices, verify that you selected the correct device.
The IP address of the selected device displays in the **Selected IP Address** textbox.
5. Enter the new IP address for the device in the **New IP Address** textbox.

The utility should appear similar to the following figure.

Figure 1. Changing the IP Address



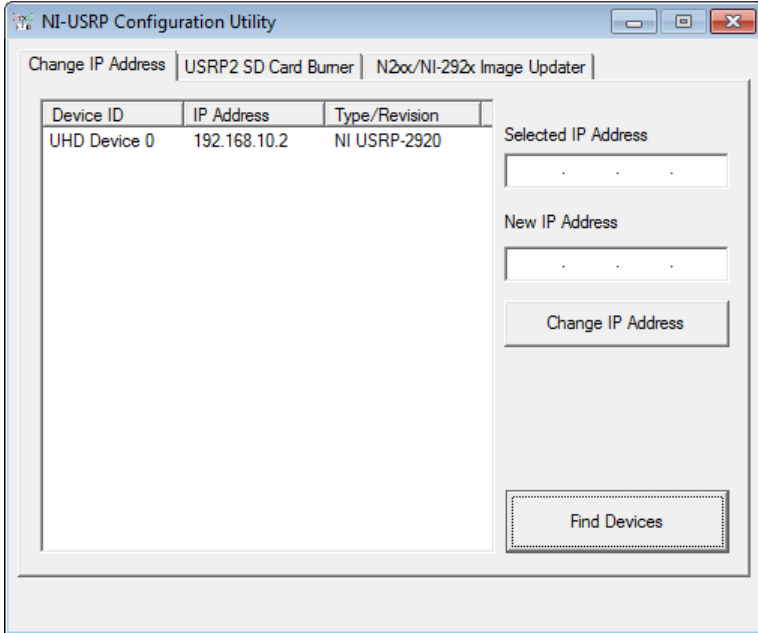
6. Click the **Change IP Address** button or press <Enter> to change the IP address.
The IP address of the selected device displays in the **Selected IP Address** textbox.
7. The utility prompts you to confirm your selection. Click **OK** if your selection is correct; otherwise, click **Cancel**.
8. The utility displays a confirmation to indicate the process is complete. Click **OK**.
9. Power cycle the device to apply the changes.
10. After you change the IP address, you must power cycle the device and click **Find Devices** in the utility to update the list of devices.

Confirming Network Connection

1. Select **Start»All Programs»National Instruments»NI-USRP»NI-USRP Configuration Utility** to open the NI-USRP Configuration Utility.
2. Select the **Change IP Address** tab of the utility.

Your device should appear in the list on the left side of the tab, similar to the following figure.

Figure 2. Confirm Network Connection



Note If your device is not listed, verify that your device is powered on and correctly connected, then click the **Find Devices** button to scan for NI USRP devices. Your device should appear in the list on the left side of the tab.

Related Information

[Changing the IP Address](#) on page 7

[The Device Does Not Connect to the Host Ethernet Interface](#) on page 18

Configuring Multiple Devices with Ethernet

You can connect multiple devices in the following ways:

- Multiple Ethernet interfaces—One device for each interface
- Single Ethernet interface—One device connected to the interface, with additional devices connected using an optional MIMO cable
- Single Ethernet interface—Multiple devices connected to an unmanaged switch



Tip Sharing a single gigabit Ethernet interface among devices may reduce overall signal throughput. For maximum signal throughput, NI recommends that you connect no more than one device per Ethernet interface.

Multiple Host Ethernet Interfaces

To configure multiple devices connected to separate gigabit Ethernet interfaces, assign each Ethernet interface a separate subnet, and assign the corresponding device an address in that subnet, as shown in the following table.

Table 3. Multiple Host Ethernet Interface Configuration

Device	Host IP Address	Host Subnet Mask	Device IP Address
NI USRP Device 0	192.168.10.1	255.255.255.0	192.168.10.2
NI USRP Device 1	192.168.11.1	255.255.255.0	192.168.11.2

Single Host Ethernet Interface—MIMO

You can configure multiple devices using a single host Ethernet interface when the devices are connected to each other using a MIMO cable. Assign each device a separate IP address in the subnet of the host Ethernet interface, as shown in the following table. Connect Device 0 to the Ethernet interface and connect Device 1 to Device 0 using a MIMO cable.

Table 4. Single Host Ethernet Interface—MIMO Configuration

Device	Host IP Address	Host Subnet Mask	Device IP Address
NI USRP Device 0	192.168.10.1	255.255.255.0	192.168.10.2
NI USRP Device 1	192.168.10.1	255.255.255.0	192.168.10.3

Single Host Ethernet Interface—Unmanaged Switch

You can connect multiple NI USRP devices to a host computer through an unmanaged gigabit Ethernet switch that allows a single gigabit Ethernet adapter on the computer to interface with multiple NI USRP devices connected to the switch. Assign the host Ethernet interface a subnet, and assign each device an address in that subnet, as shown in the following table.

Table 5. Single Host Ethernet Interface—Unmanaged Switch Configuration

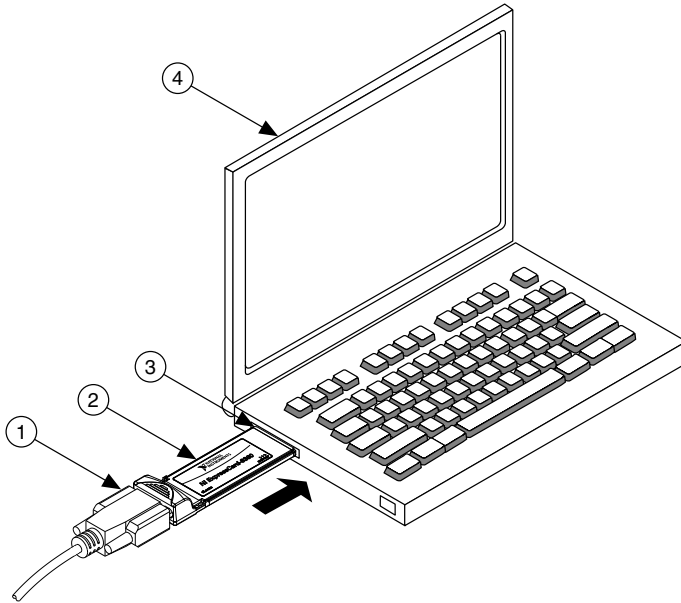
Device	Host IP Address	Host Subnet Mask	Device IP Address
NI USRP Device 0	192.168.10.1	255.255.255.0	192.168.10.2
NI USRP Device 1	192.168.10.1	255.255.255.0	192.168.10.3

Using the Optional NI ExpressCard Slot - MXI Express Interface Kit for USRP RIO to Connect to a Laptop Computer

Laptop computers are not grounded, so you must complete the following steps to safely connect a laptop computer to your NI 294x/295x device:

1. Ensure the NI 294x/295x device is plugged in and powered off.
2. Touch the NI ExpressCard-8360B and outer metal case of the NI 294x/295x device simultaneously.
3. Connect the cable to the NI ExpressCard-8360B and NI 294x/295x device.
4. Plug the NI ExpressCard-8360B into an available ExpressCard slot. If your laptop computer is already running or hibernating when you install an NI ExpressCard-8360B, you must restart to detect the NI 294x/295x device. Otherwise, the NI 294x/295x device is detected when you start your computer.

Figure 3. Connecting the Express Card to a Laptop Computer



- | | |
|--|---------------------|
| 1. Cable Included with ExpressCard Interface Kit | 3. ExpressCard Slot |
| 2. NI ExpressCard-8360B | 4. Laptop Computer |

Using the Optional NI PCIe - MXI Express Interface Kit for USRP RIO to Connect to a Desktop Computer

1. Power down your NI 294x/295x device.
2. Power down your desktop computer.
3. Follow the installation instructions in the *Hardware Installation* section of the *Set Up Your MXI™ Express ×4 System* document included in the kit to install the NI PCIe-8371.
4. Connect the NI 8371 to the NI 294x/295x using the included cable.
5. Power on the NI USRP device.
6. Power on the desktop computer.

Related Information

[Refer to the *Set Up Your MXI™ Express ×4 System* printed document](#)

Using the Optional NI PXIe - MXI Express Interface Kit for USRP RIO to Connect to a PXI Express Chassis

1. Power down your NI 294x/295x device.
2. Power down your PXI Express chassis.

3. Follow the installation instructions in the *Hardware Installation* section of the *Set Up Your MXI™ Express ×4 System* document included in the kit to install the NI PXIe-8374.
4. Connect the NI 8374 to the to the NI 294x/295x using the included cable.
5. Power on the NI 294x/295x device.
6. Power on the PXI Express chassis.

Related Information

[Refer to the Set Up Your MXI™ Express ×4 System printed document](#)

Device Firmware and FPGA Images

NI 29xx devices ship with firmware and FPGA images compatible with NI-USRP driver software. You may need to update the device for compatibility with the latest version of the software.

When you use the NI-USRP API, a default FPGA loads from persistent storage on the device.

The driver software media also includes the NI-USRP Configuration Utility, which you can use to update the devices.



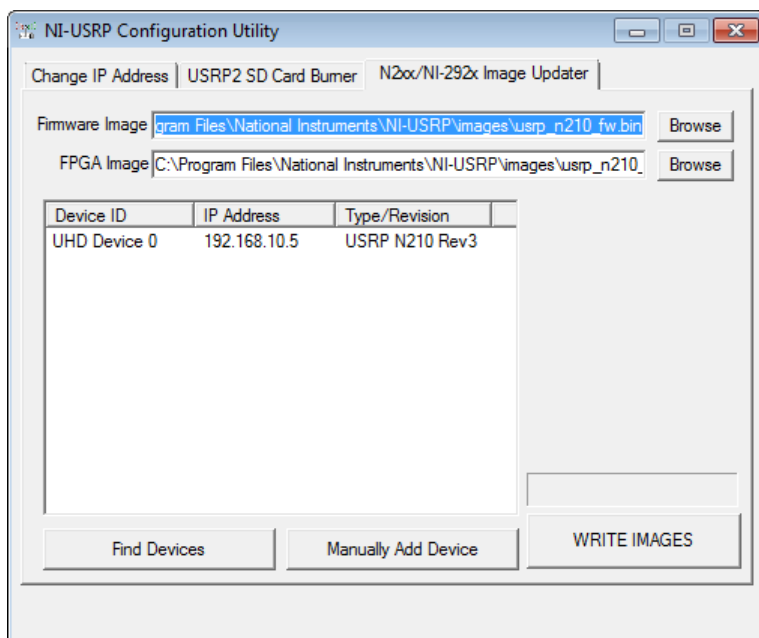
Note If you are using an NI 294x/295x device as a LabVIEW FPGA target, do not update firmware and FPGA images. Instead, use a sample project as a starting point to create a custom FPGA.

Updating USRP N2xx/NI 29xx Firmware and FPGA Images

The firmware and FPGA images for the USRP N2xx and NI 29xx devices are stored in the device internal memory. You can program the device over the network to update or change the firmware and FPGA images.

1. If connected to the device using Ethernet, verify that the host Ethernet interface is configured correctly.
2. Select **Start»All Programs»National Instruments»NI-USRP»NI-USRP Configuration Utility** to open the NI-USRP Configuration Utility.
3. Select the **N2xx/NI-29xx Image Updater** tab. The utility should automatically populate the **Firmware Image** and **FPGA Image** fields with the paths to the default firmware and FPGA image files. If you want to use different files, click the **Browse** button next to the file you want to change, and navigate to the file you want to use.
4. The utility updates the firmware and FPGA images in a single operation. Verify that the firmware and FPGA image paths are entered correctly. The utility should appear similar to the following figure.

Figure 4. N2xx/NI-29xx Image Updater

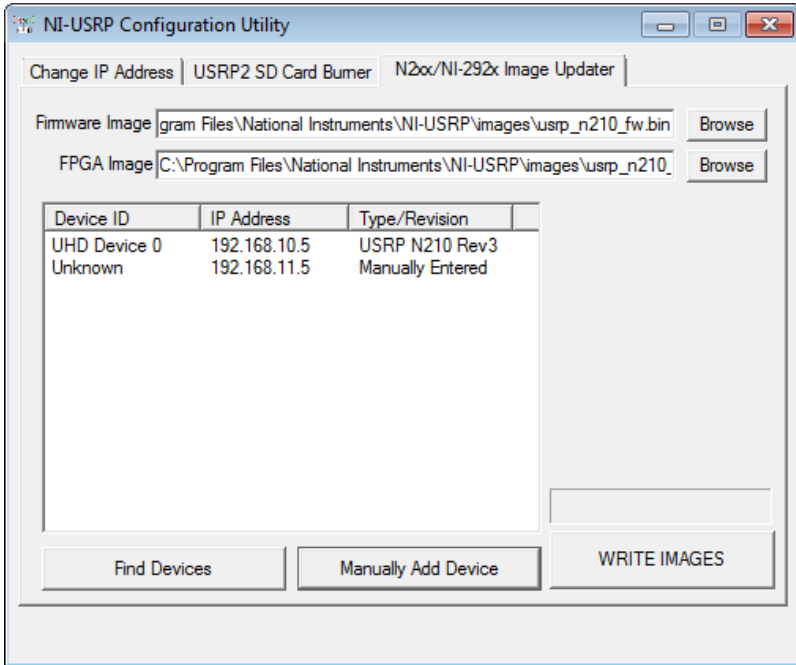


5. Click the **Find Devices** button to scan for USRP devices and update the device list.

If your device does not appear in the list, verify that the device is on and is correctly connected to the computer.

If your device still does not appear in the list, you can manually add the device to the list. Click the **Manually Add Device** button, enter the IP address of the device in the dialog box that displays, and click **OK**. The manually added device appears in the device list, similar to the following figure.

Figure 5. Manually Added Device



6. Select the device to update from the device list, and verify that you selected the correct device.
7. Verify that the version of the FPGA image file matches the board revision for the device you are updating. On Ettus devices, locate the board revision on a label on the back of the device.
8. To update the device, click the **WRITE IMAGES** button.
9. A confirmation dialog box displays. Confirm your selections and click **OK** to continue.

A progress bar indicates the status of the update.

10. When the update completes, a dialog box prompts you to reset the device. A device reset applies the new images to the device. Click **OK** to reset the device.



Note The utility is unresponsive while it verifies that the device reset correctly.

11. Close the utility.
12. For NI 292x/293x devices only—verify that the D LED is lit on the device front panel to confirm that the firmware and FPGA images loaded successfully.

Programming the NI 29xx

You can use two sets of nodes to program the device .

- Use the NI-USRP nodes to create device applications on the host using the default FPGA personality.
- Use the USRP RIO nodes to create custom FPGA code and communicate with a custom FPGA personality on the device target.

Using the USRP RIO Sample Projects

The LabVIEW Communications System Design Suite contains sample projects that you can use as a starting point for application development.

1. Launch the LabVIEW Communications System Design Suite.
2. Select the sample project you want to use from the Project Templates under **New**.

Modifying The Sample Project To Run On Your Hardware

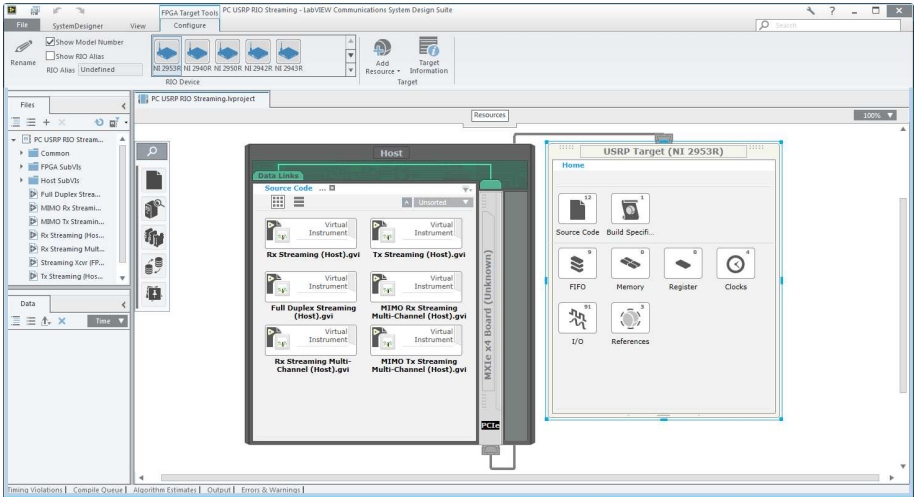
After you open a sample project, you can modify it to begin interacting with your hardware.

1. (Optional) Name your project and select a location directory where it will be saved.
2. Click **Create**.
3. LabVIEW Communications System Design Suite generates your project along with a USRP target, which by default is NI 2953R.

The default display tab is SystemDesigner, which shows the layout of the hardware you intend to use with your application. Inside each device are different resources that you can use or modify, such as **Source Code** and **I/O**. In this example, the resources include the host source code, which are `.gvi` files that run LabVIEW Communications System Design Suite code on your PC. The USRP target source code runs on the FPGA.

4. To change the default USRP target, select the USRP target in SystemDesigner and then select the USRP device you want to use from the **Configure** tab.

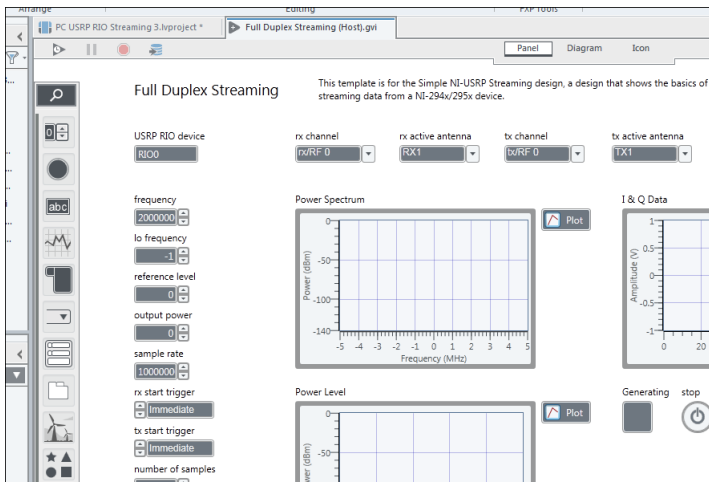
Figure 6. SystemDesigner Window



5. Select a host application to run under the host **Source Code**.
6. Before you attempt to run any host application, verify that the device identifier, which is RIO0 by default, displays the NI USRP device that you want to run the application. Use the NI-USRP Configuration Utility to verify the device identifier.

You can see the device identifier in the **USRP RIO device** control in the following host VI.

Figure 7. Full Duplex Streaming (Host).gvi



Using Examples

The instrument driver examples are instructional tools that demonstrate some of the functionality of the NI USRP devices. You can use these examples separately or integrate them into your systems.

Access the examples by selecting **File»Examples**.

Troubleshooting

If an issue persists after you complete a troubleshooting procedure, contact NI technical support or visit ni.com/support.

Device Troubleshooting

The NI USRP Device Does Not Appear in MAX

MAX supports only NI 294x/295x devices configured with a PCI Express connection. If you are using an NI 294x/295x device configured with an Ethernet connection, use the NI-USRP Configuration Utility instead. Open the NI-USRP Configuration Utility from the Start menu at **Start»All Programs»National Instruments»NI-USRP»NI-USRP Configuration Utility**.

The Device Does Not Power On

Check the power supply by substituting a different adapter. You can also check that the power switch on the front of the device is engaged.

The Device Does Not Appear in the NI-USRP Configuration Utility

If connecting with an MXI Express cable, ensure that the NI USRP device is powered on and connected to a computer before you power on the computer.

If connecting with Ethernet, ensure the NI USRP device is connected to a computer with a gigabit-compatible Ethernet adapter. Next, ensure that a static IP address of 192.168.10.1 is assigned to the adapter in your computer. Allow up to 15 seconds for the device to completely start up.

Network Troubleshooting

The Device Does Not Connect to the Host Ethernet Interface

The host Ethernet interface must be a gigabit Ethernet interface to connect to the NI USRP device. Ensure the connection between the host network interface card and the device cable connection is valid and both the device and computer are powered on. A lit green LED in the upper left corner of the gigabit Ethernet connection port on the device front panel indicates a gigabit Ethernet connection.

The Device Does Not Respond to a Ping (ICMP Echo Request)

The device should reply to an internet control message protocol (ICMP) echo request. Open a Windows command prompt and enter `ping 192.168.10.2`, where `192.168.10.2` is the IP address for your NI USRP device, to ping the device. If you do not receive a response, verify that the host network interface card is set to a static IP address corresponding to the same subnet as the IP address of the corresponding device. Also verify that the device IP address is set properly.

Related Information

[Changing the IP Address](#) on page 7

The NI-USRP Configuration Utility Does Not Return a Listing for My Device

If the NI-USRP Configuration Utility does not return a listing for your device, search for a specific IP address.

1. Navigate to `<Program Files>\National Instruments\NI-USRP\`.
2. `<Shift>`-right-click the `utilities` folder, and select **Open command window here** from the shortcut menu to open a Windows command prompt.
3. Enter `uhd_find_devices --args=addr=192.168.10.2` in the command prompt, where `192.168.10.2` is the IP address for your NI USRP device.
4. Press `<Enter>`.

If the `uhd_find_devices` command does not return the listing for your device, the firewall may be blocking replies to UDP broadcast packets. Windows installs and enables a firewall by default. To allow UDP communication with a device, disable any firewall software associated with the network interface for the device.

The Device IP Address Does Not Reset to the Default

If you cannot reset the default device IP address, your device may be on a different subnet than the host network adapter. You can power cycle the device in a safe (read-only) image, which sets the device to the default IP address of `192.168.10.2`.

1. Open the device enclosure, making sure to take appropriate static precautions.
2. Locate the safe-mode button, a push-button switch (S2), inside the enclosure.
3. Press and hold the safe-mode button while you power cycle the device.
4. Continue to press the safe-mode button until the front-panel LEDs blink and remain solid.
5. While in safe-mode, run the NI-USRP Configuration Utility to change the IP address from the default, `192.168.10.2`, to a new value.
6. Power cycle the device without holding the safe-mode button to return the normal mode.



Note NI recommends that you use a dedicated network with no other USRP devices connected to the host computer to avoid the possibility of an IP address conflict. Also, verify that the static IP address of the host network adapter on

the computer that runs the NI-USRP Configuration Utility is different from the device default IP address of 192.168.10.2 and different from the new IP address to which you want to set the device.



Note If the device IP address is on a different subnet from the host network adapter, the host system and configuration utility cannot communicate with and configure the device. For example, the utility recognizes, but cannot configure a device with an IP address of 192.168.11.2 connected to a host network adapter with a static IP address of 192.168.10.1 and a subnet mask of 255.255.255.0. To communicate with and configure the device, change the host network adapter to a static IP address on the same subnet as the device, such as 192.168.11.1, or change the subnet mask of the host network adapter to recognize a wider range of IP addresses, such as 255.255.0.0.

Related Information

[Changing the IP Address](#) on page 7

Front Panels, Back Panels, and Connectors

NI USRP-2920

Figure 8. NI USRP-2920 Front Panel

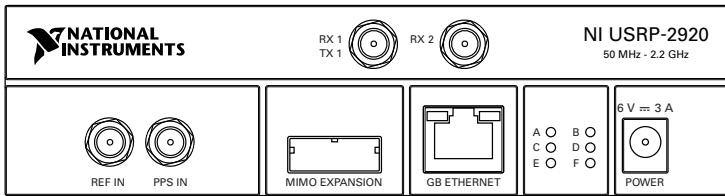


Table 6. NI USRP-2920 Module Front Panel Connectors

Connector	Use
RX1 TX1	Input and output terminal for the RF signal. RX1 TX1 is an SMA (f) connector with an impedance of 50 Ω and is a single-ended input or output channel.
RX2	Input terminal for the RF signal. RX2 is an SMA (f) connector with an impedance of 50 Ω and is a single-ended input channel.

Table 6. NI USRP-2920 Module Front Panel Connectors (Continued)

Connector	Use
REF IN	Input terminal for an external reference signal for the local oscillator (LO) on the device. REF IN is an SMA (f) connector with an impedance of 50 Ω and is a single-ended reference input. REF IN accepts a 10 MHz signal with a minimum input power of 0 dBm (.632 V _{pk-pk}) and a maximum input power of 15 dBm (3.56 V _{pk-pk}) for a square wave or sine wave.
PPS IN	Input terminal for the pulse per second (PPS) timing reference. PPS IN is an SMA (f) connector with an impedance of 50 Ω and is a single-ended input. PPS IN accepts 0 V to 3.3 V TTL and 0 V to 5 V TTL signals.
MIMO EXPANSION	The MIMO EXPANSION interface port connects two NI USRP devices using a compatible MIMO cable.
GB ETHERNET	The gigabit Ethernet port accepts an RJ-45 connector and gigabit Ethernet compatible cable (Category 5, Category 5e, or Category 6).
POWER	The power input accepts a 6 V, 3 A external DC power connector.

Table 7. NI USRP-2920 Module LEDs

LED	Indication
A	Indicates the transmit status of the module: OFF—The module is not transmitting data. GREEN—The module is transmitting data.
B	Indicates the status of the physical MIMO cable link: OFF—The modules are not connected using the MIMO cable. GREEN—The modules are connected using the MIMO cable.
C	Indicates the receive status of the module: OFF—The module is not receiving data. GREEN—The module is receiving data.
D	Indicates the firmware status of the module: OFF—The firmware is not loaded. GREEN—The firmware is loaded.

Table 7. NI USRP-2920 Module LEDs (Continued)

LED	Indication
E	Indicates the reference lock status of the LO on the module: OFF—There is no reference signal, or the LO is not locked to a reference signal. BLINKING—The LO is not locked to a reference signal. GREEN—The LO is locked to a reference signal.
F	Indicates the power status of the module: OFF—The module is powered off. GREEN—The module is powered on.

NI USRP-2921

Figure 9. NI USRP-2921 Front Panel

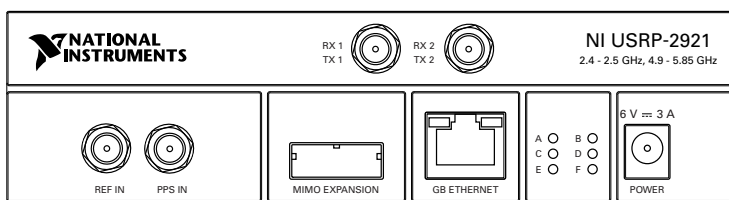


Table 8. NI USRP-2921 Module Front Panel Connectors

Connector	Use
RX1 TX1	Input and output terminal for the RF signal. RX1 TX1 is an SMA (f) connector with an impedance of 50 Ω and is a single-ended input or output channel.
RX2	Input terminal for the RF signal. RX2 is an SMA (f) connector with an impedance of 50 Ω and is a single-ended input channel.
REF IN	Input terminal for an external reference signal for the local oscillator (LO) on the device. REF IN is an SMA (f) connector with an impedance of 50 Ω and is a single-ended reference input. REF IN accepts a 10 MHz signal with a minimum input power of 0 dBm (.632 V _{pk-pk}) and a maximum input power of 15 dBm (3.56 V _{pk-pk}) for a square wave or sine wave.

Table 8. NI USRP-2921 Module Front Panel Connectors (Continued)

Connector	Use
PPS IN	Input terminal for the pulse per second (PPS) timing reference. PPS IN is an SMA (f) connector with an impedance of 50 Ω and is a single-ended input. PPS IN accepts 0 V to 3.3 V TTL and 0 V to 5 V TTL signals.
MIMO EXPANSION	The MIMO EXPANSION interface port connects two NI USRP devices using a compatible MIMO cable.
GB ETHERNET	The gigabit Ethernet port accepts an RJ-45 connector and gigabit Ethernet compatible cable (Category 5, Category 5e, or Category 6).
POWER	The power input accepts a 6 V, 3 A external DC power connector.

Table 9. NI USRP-2921 Module LEDs

LED	Indication
A	Indicates the transmit status of the module: OFF—The module is not transmitting data. GREEN—The module is transmitting data.
B	Indicates the status of the physical MIMO cable link: OFF—The modules are not connected using the MIMO cable. GREEN—The modules are connected using the MIMO cable.
C	Indicates the receive status of the module: OFF—The module is not receiving data. GREEN—The module is receiving data.
D	Indicates the firmware status of the module: OFF—The firmware is not loaded. GREEN—The firmware is loaded.

Table 9. NI USRP-2921 Module LEDs (Continued)

LED	Indication
E	Indicates the reference lock status of the LO on the module: OFF—There is no reference signal, or the LO is not locked to a reference signal. BLINKING—The LO is not locked to a reference signal. GREEN—The LO is locked to a reference signal.
F	Indicates the power status of the module: OFF—The module is powered off. GREEN—The module is powered on.

NI USRP-2922

Figure 10. NI USRP-2922 Front Panel

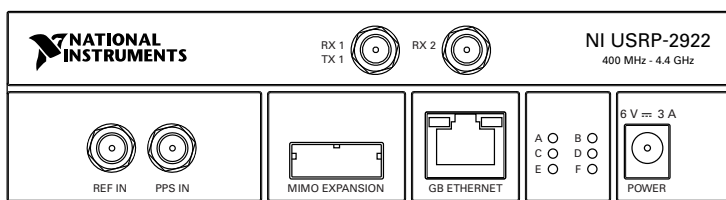


Table 10. NI USRP-2922 Module Front Panel Connectors

Connector	Use
RX1 TX1	Input and output terminal for the RF signal. RX1 TX1 is an SMA (f) connector with an impedance of 50 Ω and is a single-ended input or output channel.
RX2	Input terminal for the RF signal. RX2 is an SMA (f) connector with an impedance of 50 Ω and is a single-ended input channel.
REF IN	Input terminal for an external reference signal for the local oscillator (LO) on the device. REF IN is an SMA (f) connector with an impedance of 50 Ω and is a single-ended reference input. REF IN accepts a 10 MHz signal with a minimum input power of 0 dBm (.632 V _{pk-pk}) and a maximum input power of 15 dBm (3.56 V _{pk-pk}) for a square wave or sine wave.

Table 10. NI USRP-2922 Module Front Panel Connectors (Continued)

Connector	Use
PPS IN	Input terminal for the pulse per second (PPS) timing reference. PPS IN is an SMA (f) connector with an impedance of 50 Ω and is a single-ended input. PPS IN accepts 0 V to 3.3 V TTL and 0 V to 5 V TTL signals.
MIMO EXPANSION	The MIMO EXPANSION interface port connects two NI USRP devices using a compatible MIMO cable.
GB ETHERNET	The gigabit Ethernet port accepts an RJ-45 connector and gigabit Ethernet compatible cable (Category 5, Category 5e, or Category 6).
POWER	The power input accepts a 6 V, 3 A external DC power connector.

Table 11. NI USRP-2922 Module LEDs

LED	Indication
A	Indicates the transmit status of the module: OFF—The module is not transmitting data. GREEN—The module is transmitting data.
B	Indicates the status of the physical MIMO cable link: OFF—The modules are not connected using the MIMO cable. GREEN—The modules are connected using the MIMO cable.
C	Indicates the receive status of the module: OFF—The module is not receiving data. GREEN—The module is receiving data.
D	Indicates the firmware status of the module: OFF—The firmware is not loaded. GREEN—The firmware is loaded.

Table 11. NI USRP-2922 Module LEDs (Continued)

LED	Indication
E	Indicates the reference lock status of the LO on the module: OFF—There is no reference signal, or the LO is not locked to a reference signal. BLINKING—The LO is not locked to a reference signal. GREEN—The LO is locked to a reference signal.
F	Indicates the power status of the module: OFF—The module is powered off. GREEN—The module is powered on.

NI USRP-2930

Figure 11. NI USRP-2930 Front Panel

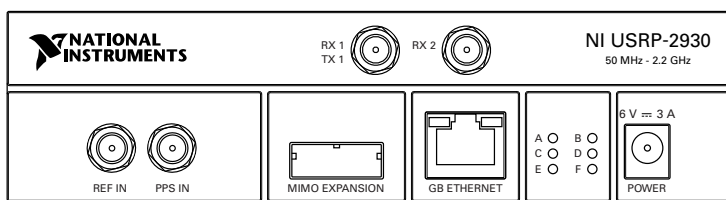


Table 12. NI USRP-2930 Module Front Panel Connectors

Connector	Use
RX1 TX1	Input and output terminal for the RF signal. RX1 TX1 is an SMA (f) connector with an impedance of 50 Ω and is a single-ended input or output channel.
RX2	Input terminal for the RF signal. RX2 is an SMA (f) connector with an impedance of 50 Ω and is a single-ended input channel.
REF IN	This terminal is not used for this device.
PPS IN	Input terminal for the PPS timing reference. PPS IN is an SMA (f) connector with an impedance of 50 Ω and is a single-ended input channel. PPS IN accepts 0 V to 3.3 V TTL and 0 V to 5 V TTL signals.
MIMO EXPANSION	The MIMO EXPANSION interface port connects two USRP devices using a compatible MIMO cable.

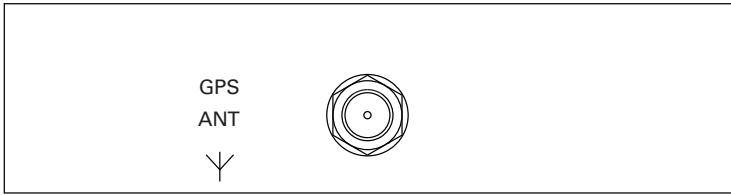
Table 12. NI USRP-2930 Module Front Panel Connectors (Continued)

Connector	Use
GB ETHERNET	The gigabit Ethernet port accepts an RJ-45 connector and gigabit Ethernet compatible cable (Category 5, Category 5e, or Category 6).
POWER	The power input accepts a 6 V, 3 A external DC power connector.

Table 13. NI USRP-2930 Module LEDs

LED	Indication
A	Indicates the transmit status of the module: OFF—The module is not transmitting data. GREEN—The module is transmitting data.
B	Indicates the status of the physical MIMO cable link: OFF—The modules are not connected using the MIMO cable. GREEN—The modules are connected using the MIMO cable.
C	Indicates the receive status of the module: OFF—The module is not receiving data. GREEN—The module is receiving data.
D	Indicates the firmware status of the module: OFF—The firmware is not loaded. GREEN—The firmware is loaded.
E	Indicates the reference lock status of the LO on the module: OFF—There is no reference signal, or the LO is not locked to a reference signal. BLINKING—The LO is not locked to a reference signal. GREEN—The LO is locked to a reference signal.
F	Indicates the power status of the module: OFF—The module is powered off. GREEN—The module is powered on.

Figure 12. NI USRP-2930 Back Panel



GPS ANT is the input terminal for the GPS antenna signal. GPS ANT is an SMA (f) connector with an impedance of 50 Ω .

NI USRP-2932

Figure 13. NI USRP-2932 Front Panel

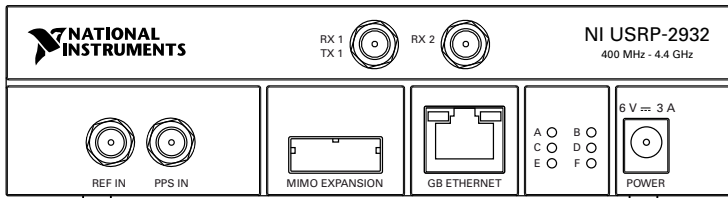


Table 14. NI USRP-2932 Module Front Panel Connectors

Connector	Use
RX1 TX1	Input and output terminal for the RF signal. RX1 TX1 is an SMA (f) connector with an impedance of 50 Ω and is a single-ended input or output channel.
RX2	Input terminal for the RF signal. RX2 is an SMA (f) connector with an impedance of 50 Ω and is a single-ended input channel.
REF IN	This terminal is not used for this device.
PPS IN	Input terminal for the PPS timing reference. PPS IN is an SMA (f) connector with an impedance of 50 Ω and is a single-ended input channel. PPS IN accepts 0 V to 3.3 V TTL and 0 V to 5 V TTL signals.
MIMO EXPANSION	The MIMO EXPANSION interface port connects two USRP devices using a compatible MIMO cable.

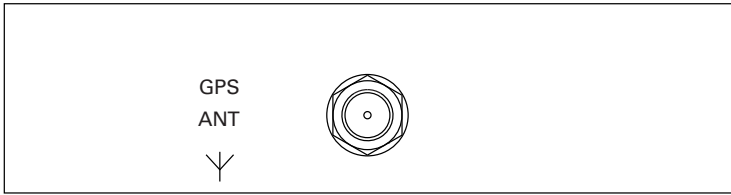
Table 14. NI USRP-2932 Module Front Panel Connectors (Continued)

Connector	Use
GB ETHERNET	The gigabit Ethernet port accepts an RJ-45 connector and gigabit Ethernet compatible cable (Category 5, Category 5e, or Category 6).
POWER	The power input accepts a 6 V, 3 A external DC power connector.

Table 15. NI USRP-2932 Module LEDs

LED	Indication
A	Indicates the transmit status of the module: OFF—The module is not transmitting data. GREEN—The module is transmitting data.
B	Indicates the status of the physical MIMO cable link: OFF—The modules are not connected using the MIMO cable. GREEN—The modules are connected using the MIMO cable.
C	Indicates the receive status of the module: OFF—The module is not receiving data. GREEN—The module is receiving data.
D	Indicates the firmware status of the module: OFF—The firmware is not loaded. GREEN—The firmware is loaded.
E	Indicates the reference lock status of the LO on the module: OFF—There is no reference signal, or the LO is not locked to a reference signal. BLINKING—The LO is not locked to a reference signal. GREEN—The LO is locked to a reference signal.
F	Indicates the power status of the module: OFF—The module is powered off. GREEN—The module is powered on.

Figure 14. NI USRP-2932 Back Panel



GPS ANT is the input terminal for the GPS antenna signal. GPS ANT is an SMA (f) connector with an impedance of 50 Ω .

NI USRP-2940R

Figure 15. NI USRP-2940R Front Panel

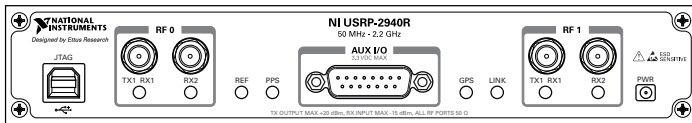


Table 16. NI USRP-2940R Module Front Panel Connectors

Connector		Use
JTAG		A USB port that connects the host computer to the device FPGA for development and debugging. You cannot currently configure or program the device FPGA using the JTAG connector.
RF 0	TX1, RX1	Input and output terminal for the RF signal. TX1 RX1 is an SMA (f) connector with an impedance of 50 Ω and is a single-ended input or output channel.
	RX2	Input terminal for the RF signal. RX2 is an SMA (f) connector with an impedance of 50 Ω and is a single-ended input channel.
AUX I/O		General-purpose I/O (GPIO) port. AUX I/O is controlled by the FPGA.

Table 16. NI USRP-2940R Module Front Panel Connectors (Continued)

Connector		Use
RF 1	TX1, RX1	Input and output terminal for the RF signal. TX1 RX1 is an SMA (f) connector with an impedance of 50 Ω and is a single-ended input or output channel.
	RX2	Input terminal for the RF signal. RX2 is an SMA (f) connector with an impedance of 50 Ω and is a single-ended input channel.



Note The LED indications described in the following table occur only when you use the NI-USRP nodes with the default FPGA image. When you use the USRP-RIO nodes, you customize the LED indications.

Table 17. NI USRP-2940R Module LEDs

LED	Description	Color	State	Indication
RF 0	TX1, RX1	OFF	—	The module is not active.
		Red	Solid	The module is receiving data.
		Green	Solid	The module is transmitting data.
	RX2	OFF	—	The module is not receiving.
Green		Solid	The module is receiving.	
REF	Indicates the status of the reference signal.	OFF	—	There is no reference signal, or the device is not locked to the reference signal.
		Green	Blinking	The device is not locked to the reference signal.
			Solid	The device is locked to the reference signal.

Table 17. NI USRP-2940R Module LEDs (Continued)

LED		Description	Color	State	Indication
PPS		Indicates the pulse per second (PPS).	OFF	—	There is no PPS timing reference signal, or the device is not locked to the reference signal.
			Green	Blinking	The device is not locked to the PPS timing reference signal.
				Solid	The device is locked to the PPS timing reference signal.
GPS		Indicates whether the GPSDO is locked.	OFF	—	There is no GPSDO or the GPSDO is not locked.
			Green	Solid	The GPSDO is locked.
LINK		Indicates the status of the link to a host computer.	OFF	—	There is no link to a host computer.
			Green, yellow, or red	Solid	The host is actively communicating with the device.
RF 1	TX1, RX1	Indicates the transmit status of the module.	OFF	—	The module is not active.
			Red	Solid	The module is receiving data.
			Green	Solid	The module is transmitting data.
	RX2	Indicates the receive status of the module.	OFF	—	The module is not receiving.
			Green	Solid	The module is receiving.

Figure 16. NI USRP-2940R Module Back Panel

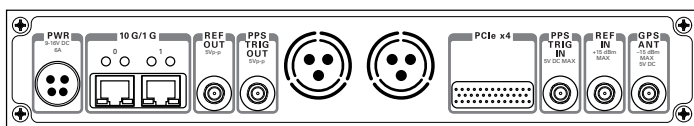



Table 18. NI USRP-2940R Module Back Panel Connectors

Connector	Use
PWR	Input that accepts a 9 V to 16 V, 6 A external DC power connector.
1G/10G ETH	Ethernet port that accepts 1G SFP modules and 10G SFP+ modules. With a 1G ETH module inserted, the ports accept gigabit Ethernet-compatible cables (Category 5, Category 5e, or Category 6).
REF OUT	Output terminal for an external reference signal for the LO on the device. REF OUT is a female SMA connector with an impedance of 50 Ω , and it is a single-ended reference output. The output signal at this connector is 10 MHz at 3.3 V.
REF IN	Input terminal for an external reference signal for the LO on the device. REF IN is a female SMA connector with an impedance of 50 Ω , and it is a single-ended reference input. REF IN accepts a 10 MHz signal with a minimum input power of 0 dBm (0.632 V _{pk-pk}) and a maximum input power of 15 dBm (3.56 V _{pk-pk}) for a square wave or sine wave.
PCIe x4	Port for a PCI Express Generation 1, x4 bus connection through an MXI Express four-lane cable.
PPS TRIG OUT	Output terminal for the pulse per second (PPS) timing reference. PPS TRIG OUT is a female SMA connector with an impedance of 50 Ω , and it is a single-ended input. The output signal is 0 V to 3.3 V TTL. You can also use this port as triggered output (TRIG OUT) that you program with the PPS Trig Out I/O signal.
PPS TRIG IN	Input terminal for pulse per second (PPS) timing reference. PPS TRIG IN is a female SMA connector with an impedance of 50 Ω , and it is a single-ended input channel. PPS TRIG IN accepts 0 V to 3.3 V TTL and 0 V to 5 V TTL signals. You can also use this port as a triggered input (TRIG IN) that you control using NI-USRP software.
GPS ANT	<p>Input terminal for the GPS antenna signal. GPS ANT is a female SMA connector with a maximum input power of -15 dBm and an output of DC 5 V to power an active antenna.</p> <p> Caution Do not terminate the GPS ANT port if you do not use it.</p>

NI USRP-2942R

Figure 17. NI USRP-2942R Front Panel

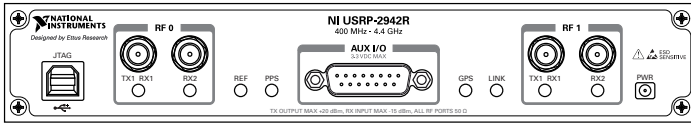


Table 19. NI USRP-2942R Module Front Panel Connectors

Connector		Use
JTAG		A USB port that connects the host computer to the device FPGA for development and debugging. You cannot currently configure or program the device FPGA using the JTAG connector.
RF 0	TX1, RX1	Input and output terminal for the RF signal. TX1 RX1 is an SMA (f) connector with an impedance of 50 Ω and is a single-ended input or output channel.
	RX2	Input terminal for the RF signal. RX2 is an SMA (f) connector with an impedance of 50 Ω and is a single-ended input channel.
AUX I/O		General-purpose I/O (GPIO) port. AUX I/O is controlled by the FPGA.
RF 1	TX1, RX1	Input and output terminal for the RF signal. TX1 RX1 is an SMA (f) connector with an impedance of 50 Ω and is a single-ended input or output channel.
	RX2	Input terminal for the RF signal. RX2 is an SMA (f) connector with an impedance of 50 Ω and is a single-ended input channel.



Note The LED indications described in the following table occur only when you use the NI-USRP nodes with the default FPGA image. When you use the USRP-RIO nodes, you customize the LED indications.

Table 20. NI USRP-2942R Module LEDs

LED		Description	Color	State	Indication
RF 0	TX1, RX1	Indicates the transmit status of the module.	OFF	—	The module is not active.
			Red	Solid	The module is receiving data.
			Green	Solid	The module is transmitting data.
	RX2	Indicates the receive status of the module.	OFF	—	The module is not receiving.
Green	Solid		The module is receiving.		
REF		Indicates the status of the reference signal.	OFF	—	There is no reference signal, or the device is not locked to the reference signal.
			Green	Blinking	The device is not locked to the reference signal.
				Solid	The device is locked to the reference signal.
PPS		Indicates the pulse per second (PPS).	OFF	—	There is no PPS timing reference signal, or the device is not locked to the reference signal.
			Green	Blinking	The device is not locked to the PPS timing reference signal.
				Solid	The device is locked to the PPS timing reference signal.
GPS		Indicates whether the GPSDO is locked.	OFF	—	There is no GPSDO or the GPSDO is not locked.
			Green	Solid	The GPSDO is locked.

Table 20. NI USRP-2942R Module LEDs (Continued)

LED		Description	Color	State	Indication
LINK		Indicates the status of the link to a host computer.	OFF	—	There is no link to a host computer.
			Green, yellow, or red	Solid	The host is actively communicating with the device.
RF 1	TX1, RX1	Indicates the transmit status of the module.	OFF	—	The module is not active.
			Red	Solid	The module is receiving data.
	Green	Solid	The module is transmitting data.		
	RX2	Indicates the receive status of the module.	OFF	—	The module is not receiving.
Green			Solid	The module is receiving.	

Figure 18. NI USRP-2942R Module Back Panel

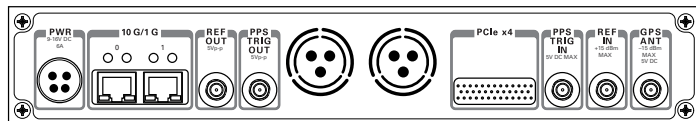



Table 21. NI USRP-2942R Module Back Panel Connectors

Connector	Use
PWR	Input that accepts a 9 V to 16 V, 6 A external DC power connector.
1G/10G ETH	Ethernet port that accepts 1G SFP modules and 10G SFP+ modules. With a 1G ETH module inserted, the ports accept gigabit Ethernet-compatible cables (Category 5, Category 5e, or Category 6).
REF OUT	Output terminal for an external reference signal for the LO on the device. REF OUT is a female SMA connector with an impedance of 50 Ω, and it is a single-ended reference output. The output signal at this connector is 10 MHz at 3.3 V.

Table 21. NI USRP-2942R Module Back Panel Connectors (Continued)

Connector	Use
REF IN	Input terminal for an external reference signal for the LO on the device. REF IN is a female SMA connector with an impedance of 50 Ω , and it is a single-ended reference input. REF IN accepts a 10 MHz signal with a minimum input power of 0 dBm (0.632 V _{pk-pk}) and a maximum input power of 15 dBm (3.56 V _{pk-pk}) for a square wave or sine wave.
PCIe x4	Port for a PCI Express Generation 1, x4 bus connection through an MXI Express four-lane cable.
PPS TRIG OUT	Output terminal for the pulse per second (PPS) timing reference. PPS TRIG OUT is a female SMA connector with an impedance of 50 Ω , and it is a single-ended input. The output signal is 0 V to 3.3 V TTL. You can also use this port as triggered output (TRIG OUT) that you program with the PPS Trig Out I/O signal.
PPS TRIG IN	Input terminal for pulse per second (PPS) timing reference. PPS TRIG IN is a female SMA connector with an impedance of 50 Ω , and it is a single-ended input channel. PPS TRIG IN accepts 0 V to 3.3 V TTL and 0 V to 5 V TTL signals. You can also use this port as a triggered input (TRIG IN) that you control using NI-USRP software.
GPS ANT	Input terminal for the GPS antenna signal. GPS ANT is a female SMA connector with a maximum input power of -15 dBm and an output of DC 5 V to power an active antenna.  Caution Do not terminate the GPS ANT port if you do not use it.

NI USRP-2943R

Figure 19. NI USRP-2943R Front Panel

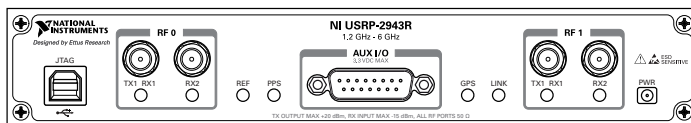


Table 22. NI USRP-2943R Module Front Panel Connectors

Connector		Use
JTAG		A USB port that connects the host computer to the device FPGA for development and debugging. You cannot currently configure or program the device FPGA using the JTAG connector.
RF 0	TX1, RX1	Input and output terminal for the RF signal. TX1 RX1 is an SMA (f) connector with an impedance of 50 Ω and is a single-ended input or output channel.
	RX2	Input terminal for the RF signal. RX2 is an SMA (f) connector with an impedance of 50 Ω and is a single-ended input channel.
AUX I/O		General-purpose I/O (GPIO) port. AUX I/O is controlled by the FPGA.
RF 1	TX1, RX1	Input and output terminal for the RF signal. TX1 RX1 is an SMA (f) connector with an impedance of 50 Ω and is a single-ended input or output channel.
	RX2	Input terminal for the RF signal. RX2 is an SMA (f) connector with an impedance of 50 Ω and is a single-ended input channel.



Note The LED indications described in the following table occur only when you use the NI-USRP nodes with the default FPGA image. When you use the USRP-RIO nodes, you customize the LED indications.

Table 23. NI USRP-2943R Module LEDs

LED		Description	Color	State	Indication
RF 0	TX1, RX1	Indicates the transmit status of the module.	OFF	—	The module is not active.
			Red	Solid	The module is receiving data.
			Green	Solid	The module is transmitting data.
RX2	Indicates the receive status of the module.	OFF	—	The module is not receiving.	
		Green	Solid	The module is receiving.	

Table 23. NI USRP-2943R Module LEDs (Continued)

LED	Description	Color	State	Indication
REF	Indicates the status of the reference signal.	OFF	—	There is no reference signal, or the device is not locked to the reference signal.
		Green	Blinking	The device is not locked to the reference signal.
			Solid	The device is locked to the reference signal.
PPS	Indicates the pulse per second (PPS).	OFF	—	There is no PPS timing reference signal, or the device is not locked to the reference signal.
		Green	Blinking	The device is not locked to the PPS timing reference signal.
			Solid	The device is locked to the PPS timing reference signal.
GPS	Indicates whether the GPSDO is locked.	OFF	—	There is no GPSDO or the GPSDO is not locked.
		Green	Solid	The GPSDO is locked.
LINK	Indicates the status of the link to a host computer.	OFF	—	There is no link to a host computer.
		Green, yellow, or red	Solid	The host is actively communicating with the device.

Table 23. NI USRP-2943R Module LEDs (Continued)

LED		Description	Color	State	Indication
RF 1	TX1, RX1	Indicates the transmit status of the module.	OFF	—	The module is not active.
			Red	Solid	The module is receiving data.
	Green		Solid	The module is transmitting data.	
RX2	Indicates the receive status of the module.	OFF	—	The module is not receiving.	
		Green	Solid	The module is receiving.	

Figure 20. NI USRP-2943R Module Back Panel

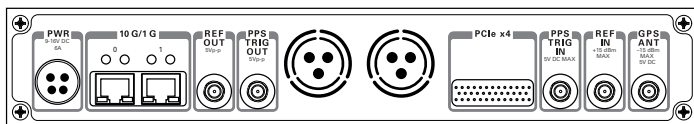



Table 24. NI USRP-2943R Module Back Panel Connectors

Connector	Use
PWR	Input that accepts a 9 V to 16 V, 6 A external DC power connector.
1G/10G ETH	Ethernet port that accepts 1G SFP modules and 10G SFP+ modules. With a 1G ETH module inserted, the ports accept gigabit Ethernet-compatible cables (Category 5, Category 5e, or Category 6).
REF OUT	Output terminal for an external reference signal for the LO on the device. REF OUT is a female SMA connector with an impedance of 50 Ω, and it is a single-ended reference output. The output signal at this connector is 10 MHz at 3.3 V.
REF IN	Input terminal for an external reference signal for the LO on the device. REF IN is a female SMA connector with an impedance of 50 Ω, and it is a single-ended reference input. REF IN accepts a 10 MHz signal with a minimum input power of 0 dBm (0.632 V _{pk-pk}) and a maximum input power of 15 dBm (3.56 V _{pk-pk}) for a square wave or sine wave.
PCIe x4	Port for a PCI Express Generation 1, x4 bus connection through an MXI Express four-lane cable.

Table 24. NI USRP-2943R Module Back Panel Connectors (Continued)

Connector	Use
PPS TRIG OUT	Output terminal for the pulse per second (PPS) timing reference. PPS TRIG OUT is a female SMA connector with an impedance of 50 Ω , and it is a single-ended input. The output signal is 0 V to 3.3 V TTL. You can also use this port as triggered output (TRIG OUT) that you program with the PPS Trig Out I/O signal.
PPS TRIG IN	Input terminal for pulse per second (PPS) timing reference. PPS TRIG IN is a female SMA connector with an impedance of 50 Ω , and it is a single-ended input channel. PPS TRIG IN accepts 0 V to 3.3 V TTL and 0 V to 5 V TTL signals. You can also use this port as a triggered input (TRIG IN) that you control using NI-USRP software.
GPS ANT	<p>Input terminal for the GPS antenna signal. GPS ANT is a female SMA connector with a maximum input power of -15 dBm and an output of DC 5 V to power an active antenna.</p> <p> Caution Do not terminate the GPS ANT port if you do not use it.</p>

NI USRP-2950R

Figure 21. NI USRP-2950R Front Panel

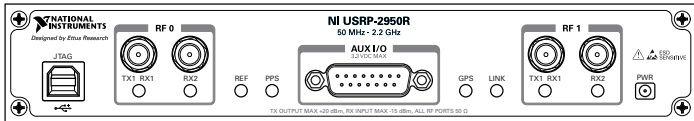


Table 25. NI USRP-2950R Module Front Panel Connectors

Connector		Use
JTAG		A USB port that connects the host computer to the device FPGA for development and debugging. You cannot currently configure or program the device FPGA using the JTAG connector.
RF 0	TX1, RX1	Input and output terminal for the RF signal. TX1 RX1 is an SMA (f) connector with an impedance of 50 Ω and is a single-ended input or output channel.
	RX2	Input terminal for the RF signal. RX2 is an SMA (f) connector with an impedance of 50 Ω and is a single-ended input channel.
AUX I/O		General-purpose I/O (GPIO) port. AUX I/O is controlled by the FPGA.
RF 1	TX1, RX1	Input and output terminal for the RF signal. TX1 RX1 is an SMA (f) connector with an impedance of 50 Ω and is a single-ended input or output channel.
	RX2	Input terminal for the RF signal. RX2 is an SMA (f) connector with an impedance of 50 Ω and is a single-ended input channel.



Note The LED indications described in the following table occur only when you use the NI-USRP nodes with the default FPGA image. When you use the USRP-RIO nodes, you customize the LED indications.

Table 26. NI USRP-2950R Module LEDs

LED		Description	Color	State	Indication
RF 0	TX1, RX1	Indicates the transmit status of the module.	OFF	—	The module is not active.
			Red	Solid	The module is receiving data.
			Green	Solid	The module is transmitting data.
RF 1	RX2	Indicates the receive status of the module.	OFF	—	The module is not receiving.
			Green	Solid	The module is receiving.

Table 26. NI USRP-2950R Module LEDs (Continued)

LED	Description	Color	State	Indication
REF	Indicates the status of the reference signal.	OFF	—	There is no reference signal, or the device is not locked to the reference signal.
		Green	Blinking	The device is not locked to the reference signal.
			Solid	The device is locked to the reference signal.
PPS	Indicates the pulse per second (PPS).	OFF	—	There is no PPS timing reference signal, or the device is not locked to the reference signal.
		Green	Blinking	The device is not locked to the PPS timing reference signal.
			Solid	The device is locked to the PPS timing reference signal.
GPS	Indicates whether the GPSDO is locked.	OFF	—	There is no GPSDO or the GPSDO is not locked.
		Green	Solid	The GPSDO is locked.
LINK	Indicates the status of the link to a host computer.	OFF	—	There is no link to a host computer.
		Green, yellow, or red	Solid	The host is actively communicating with the device.

Table 26. NI USRP-2950R Module LEDs (Continued)

LED		Description	Color	State	Indication
RF 1	TX1, RX1	Indicates the transmit status of the module.	OFF	—	The module is not active.
			Red	Solid	The module is receiving data.
	Green	Solid	The module is transmitting data.		
RX2	Indicates the receive status of the module.	OFF	—	The module is not receiving.	
		Green	Solid	The module is receiving.	

Figure 22. NI USRP-2950R Module Back Panel

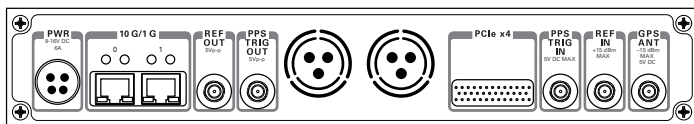



Table 27. NI USRP-2950R Module Back Panel Connectors

Connector	Use
PWR	Input that accepts a 9 V to 16 V, 6 A external DC power connector.
1G/10G ETH	Ethernet port that accepts 1G SFP modules and 10G SFP+ modules. With a 1G ETH module inserted, the ports accept gigabit Ethernet-compatible cables (Category 5, Category 5e, or Category 6).
REF OUT	Output terminal for an external reference signal for the LO on the device. REF OUT is a female SMA connector with an impedance of 50 Ω, and it is a single-ended reference output. The output signal at this connector is 10 MHz at 3.3 V.
REF IN	Input terminal for an external reference signal for the LO on the device. REF IN is a female SMA connector with an impedance of 50 Ω, and it is a single-ended reference input. REF IN accepts a 10 MHz signal with a minimum input power of 0 dBm (0.632 V _{pk-pk}) and a maximum input power of 15 dBm (3.56 V _{pk-pk}) for a square wave or sine wave.
PCIe x4	Port for a PCI Express Generation 1, x4 bus connection through an MXI Express four-lane cable.

Table 27. NI USRP-2950R Module Back Panel Connectors (Continued)

Connector	Use
PPS TRIG OUT	Output terminal for the pulse per second (PPS) timing reference. PPS TRIG OUT is a female SMA connector with an impedance of 50 Ω , and it is a single-ended input. The output signal is 0 V to 3.3 V TTL. You can also use this port as triggered output (TRIG OUT) that you program with the PPS Trig Out I/O signal.
PPS TRIG IN	Input terminal for pulse per second (PPS) timing reference. PPS TRIG IN is a female SMA connector with an impedance of 50 Ω , and it is a single-ended input channel. PPS TRIG IN accepts 0 V to 3.3 V TTL and 0 V to 5 V TTL signals. You can also use this port as a triggered input (TRIG IN) that you control using NI-USRP software.
GPS ANT	<p>Input terminal for the GPS antenna signal. GPS ANT is a female SMA connector with a maximum input power of -15 dBm and an output of DC 5 V to power an active antenna.</p> <p> Caution Do not terminate the GPS ANT port if you do not use it.</p>

NI USRP-2952R

Figure 23. NI USRP-2952R Front Panel

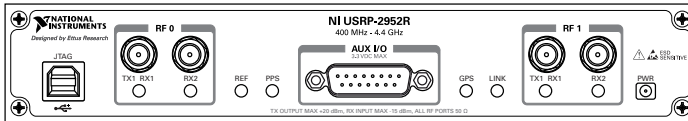


Table 28. NI USRP-2952R Module Front Panel Connectors

Connector		Use
JTAG		A USB port that connects the host computer to the device FPGA for development and debugging. You cannot currently configure or program the device FPGA using the JTAG connector.
RF 0	TX1, RX1	Input and output terminal for the RF signal. TX1 RX1 is an SMA (f) connector with an impedance of 50 Ω and is a single-ended input or output channel.
	RX2	Input terminal for the RF signal. RX2 is an SMA (f) connector with an impedance of 50 Ω and is a single-ended input channel.
AUX I/O		General-purpose I/O (GPIO) port. AUX I/O is controlled by the FPGA.
RF 1	TX1, RX1	Input and output terminal for the RF signal. TX1 RX1 is an SMA (f) connector with an impedance of 50 Ω and is a single-ended input or output channel.
	RX2	Input terminal for the RF signal. RX2 is an SMA (f) connector with an impedance of 50 Ω and is a single-ended input channel.



Note The LED indications described in the following table occur only when you use the NI-USRP nodes with the default FPGA image. When you use the USRP-RIO nodes, you customize the LED indications.

Table 29. NI USRP-2952R Module LEDs

LED		Description	Color	State	Indication
RF 0	TX1, RX1	Indicates the transmit status of the module.	OFF	—	The module is not active.
			Red	Solid	The module is receiving data.
			Green	Solid	The module is transmitting data.
RF 1	RX2	Indicates the receive status of the module.	OFF	—	The module is not receiving.
			Green	Solid	The module is receiving.

Table 29. NI USRP-2952R Module LEDs (Continued)

LED	Description	Color	State	Indication
REF	Indicates the status of the reference signal.	OFF	—	There is no reference signal, or the device is not locked to the reference signal.
		Green	Blinking	The device is not locked to the reference signal.
			Solid	The device is locked to the reference signal.
PPS	Indicates the pulse per second (PPS).	OFF	—	There is no PPS timing reference signal, or the device is not locked to the reference signal.
		Green	Blinking	The device is not locked to the PPS timing reference signal.
			Solid	The device is locked to the PPS timing reference signal.
GPS	Indicates whether the GPSDO is locked.	OFF	—	There is no GPSDO or the GPSDO is not locked.
		Green	Solid	The GPSDO is locked.
LINK	Indicates the status of the link to a host computer.	OFF	—	There is no link to a host computer.
		Green, yellow, or red	Solid	The host is actively communicating with the device.

Table 29. NI USRP-2952R Module LEDs (Continued)

LED		Description	Color	State	Indication
RF 1	TX1, RX1	Indicates the transmit status of the module.	OFF	—	The module is not active.
			Red	Solid	The module is receiving data.
	Green	Solid	The module is transmitting data.		
RX2	Indicates the receive status of the module.	OFF	—	The module is not receiving.	
		Green	Solid	The module is receiving.	

Figure 24. NI USRP-2952R Module Back Panel

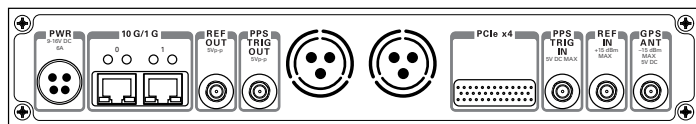



Table 30. NI USRP-2952R Module Back Panel Connectors

Connector	Use
PWR	Input that accepts a 9 V to 16 V, 6 A external DC power connector.
1G/10G ETH	Ethernet port that accepts 1G SFP modules and 10G SFP+ modules. With a 1G ETH module inserted, the ports accept gigabit Ethernet-compatible cables (Category 5, Category 5e, or Category 6).
REF OUT	Output terminal for an external reference signal for the LO on the device. REF OUT is a female SMA connector with an impedance of 50 Ω, and it is a single-ended reference output. The output signal at this connector is 10 MHz at 3.3 V.
REF IN	Input terminal for an external reference signal for the LO on the device. REF IN is a female SMA connector with an impedance of 50 Ω, and it is a single-ended reference input. REF IN accepts a 10 MHz signal with a minimum input power of 0 dBm (0.632 V _{pk-pk}) and a maximum input power of 15 dBm (3.56 V _{pk-pk}) for a square wave or sine wave.
PCIe x4	Port for a PCI Express Generation 1, x4 bus connection through an MXI Express four-lane cable.

Table 30. NI USRP-2952R Module Back Panel Connectors (Continued)

Connector	Use
PPS TRIG OUT	Output terminal for the pulse per second (PPS) timing reference. PPS TRIG OUT is a female SMA connector with an impedance of 50 Ω , and it is a single-ended input. The output signal is 0 V to 3.3 V TTL. You can also use this port as triggered output (TRIG OUT) that you program with the PPS Trig Out I/O signal.
PPS TRIG IN	Input terminal for pulse per second (PPS) timing reference. PPS TRIG IN is a female SMA connector with an impedance of 50 Ω , and it is a single-ended input channel. PPS TRIG IN accepts 0 V to 3.3 V TTL and 0 V to 5 V TTL signals. You can also use this port as a triggered input (TRIG IN) that you control using NI-USRP software.
GPS ANT	<p>Input terminal for the GPS antenna signal. GPS ANT is a female SMA connector with a maximum input power of -15 dBm and an output of DC 5 V to power an active antenna.</p> <p> Caution Do not terminate the GPS ANT port if you do not use it.</p>

NI USRP-2953R

Figure 25. NI USRP-2953R Front Panel

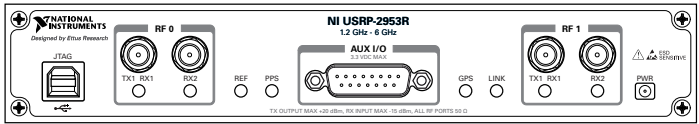


Table 31. NI USRP-2953R Module Front Panel Connectors

Connector		Use
JTAG		A USB port that connects the host computer to the device FPGA for development and debugging. You cannot currently configure or program the device FPGA using the JTAG connector.
RF 0	TX1, RX1	Input and output terminal for the RF signal. TX1 RX1 is an SMA (f) connector with an impedance of 50 Ω and is a single-ended input or output channel.
	RX2	Input terminal for the RF signal. RX2 is an SMA (f) connector with an impedance of 50 Ω and is a single-ended input channel.
AUX I/O		General-purpose I/O (GPIO) port. AUX I/O is controlled by the FPGA.
RF 1	TX1, RX1	Input and output terminal for the RF signal. TX1 RX1 is an SMA (f) connector with an impedance of 50 Ω and is a single-ended input or output channel.
	RX2	Input terminal for the RF signal. RX2 is an SMA (f) connector with an impedance of 50 Ω and is a single-ended input channel.



Note The LED indications described in the following table occur only when you use the NI-USRP nodes with the default FPGA image. When you use the USRP-RIO nodes, you customize the LED indications.

Table 32. NI USRP-2953R Module LEDs

LED		Description	Color	State	Indication
RF 0	TX1, RX1	Indicates the transmit status of the module.	OFF	—	The module is not active.
			Red	Solid	The module is receiving data.
			Green	Solid	The module is transmitting data.
	RX2	Indicates the receive status of the module.	OFF	—	The module is not receiving.
Green			Solid	The module is receiving.	

Table 32. NI USRP-2953R Module LEDs (Continued)

LED	Description	Color	State	Indication
REF	Indicates the status of the reference signal.	OFF	—	There is no reference signal, or the device is not locked to the reference signal.
		Green	Blinking	The device is not locked to the reference signal.
			Solid	The device is locked to the reference signal.
PPS	Indicates the pulse per second (PPS).	OFF	—	There is no PPS timing reference signal, or the device is not locked to the reference signal.
		Green	Blinking	The device is not locked to the PPS timing reference signal.
			Solid	The device is locked to the PPS timing reference signal.
GPS	Indicates whether the GPSDO is locked.	OFF	—	There is no GPSDO or the GPSDO is not locked.
		Green	Solid	The GPSDO is locked.
LINK	Indicates the status of the link to a host computer.	OFF	—	There is no link to a host computer.
		Green, yellow, or red	Solid	The host is actively communicating with the device.

Table 32. NI USRP-2953R Module LEDs (Continued)

LED		Description	Color	State	Indication
RF 1	TX1, RX1	Indicates the transmit status of the module.	OFF	—	The module is not active.
			Red	Solid	The module is receiving data.
	Green	Solid	The module is transmitting data.		
RX2	Indicates the receive status of the module.	OFF	—	The module is not receiving.	
		Green	Solid	The module is receiving.	

Figure 26. NI USRP-2953R Module Back Panel

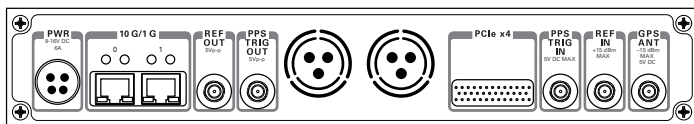



Table 33. NI USRP-2953R Module Back Panel Connectors

Connector	Use
PWR	Input that accepts a 9 V to 16 V, 6 A external DC power connector.
1G/10G ETH	Ethernet port that accepts 1G SFP modules and 10G SFP+ modules. With a 1G ETH module inserted, the ports accept gigabit Ethernet-compatible cables (Category 5, Category 5e, or Category 6).
REF OUT	Output terminal for an external reference signal for the LO on the device. REF OUT is a female SMA connector with an impedance of 50 Ω , and it is a single-ended reference output. The output signal at this connector is 10 MHz at 3.3 V.
REF IN	Input terminal for an external reference signal for the LO on the device. REF IN is a female SMA connector with an impedance of 50 Ω , and it is a single-ended reference input. REF IN accepts a 10 MHz signal with a minimum input power of 0 dBm (0.632 V _{pk-pk}) and a maximum input power of 15 dBm (3.56 V _{pk-pk}) for a square wave or sine wave.
PCIe x4	Port for a PCI Express Generation 1, x4 bus connection through an MXI Express four-lane cable.

Table 33. NI USRP-2953R Module Back Panel Connectors (Continued)

Connector	Use
PPS TRIG OUT	Output terminal for the pulse per second (PPS) timing reference. PPS TRIG OUT is a female SMA connector with an impedance of 50 Ω , and it is a single-ended input. The output signal is 0 V to 3.3 V TTL. You can also use this port as triggered output (TRIG OUT) that you program with the PPS Trig Out I/O signal.
PPS TRIG IN	Input terminal for pulse per second (PPS) timing reference. PPS TRIG IN is a female SMA connector with an impedance of 50 Ω , and it is a single-ended input channel. PPS TRIG IN accepts 0 V to 3.3 V TTL and 0 V to 5 V TTL signals. You can also use this port as a triggered input (TRIG IN) that you control using NI-USRP software.
GPS ANT	<p>Input terminal for the GPS antenna signal. GPS ANT is a female SMA connector with a maximum input power of -15 dBm and an output of DC 5 V to power an active antenna.</p> <p> Caution Do not terminate the GPS ANT port if you do not use it.</p>

Worldwide Support and Services

The National Instruments website is your complete resource for technical support. At ni.com/support, you have access to everything from troubleshooting and application development self-help resources to email and phone assistance from NI Application Engineers.

Visit ni.com/services for NI Factory Installation Services, repairs, extended warranty, and other services.

Visit ni.com/register to register your National Instruments product. Product registration facilitates technical support and ensures that you receive important information updates from NI.

A Declaration of Conformity (DoC) is our claim of compliance with the Council of the European Communities using the manufacturer's declaration of conformity. This system affords the user protection for electromagnetic compatibility (EMC) and product safety. You can obtain the DoC for your product by visiting ni.com/certification. If your product supports calibration, you can obtain the calibration certificate for your product at ni.com/calibration.

National Instruments corporate headquarters is located at 11500 North Mopac Expressway, Austin, Texas, 78759-3504. National Instruments also has offices located around the world. For telephone support in the United States, create your service request at ni.com/support or dial 1 866 ASK MYNI (275 6964). For telephone support outside the United States, visit the

Worldwide Offices section of ni.com/niglobal to access the branch office websites, which provide up-to-date contact information, support phone numbers, email addresses, and current events.

Refer to the *NI Trademarks and Logo Guidelines* at ni.com/trademarks for information on National Instruments trademarks. Other product and company names mentioned herein are trademarks or trade names of their respective companies. For patents covering National Instruments products/technology, refer to the appropriate location: **Help»Patents** in your software, the `patents.txt` file on your media, or the *National Instruments Patent Notice* at ni.com/patents. You can find information about end-user license agreements (EULAs) and third-party legal notices in the `readme` file for your NI product. Refer to the *Export Compliance Information* at ni.com/legal/export-compliance for the National Instruments global trade compliance policy and how to obtain relevant HTS codes, ECCNs, and other import/export data. NI MAKES NO EXPRESS OR IMPLIED WARRANTIES AS TO THE ACCURACY OF THE INFORMATION CONTAINED HEREIN AND SHALL NOT BE LIABLE FOR ANY ERRORS. U.S. Government Customers: The data contained in this manual was developed at private expense and is subject to the applicable limited rights and restricted data rights as set forth in FAR 52.227-14, DFAR 252.227-7014, and DFAR 252.227-7015.

© 2014 National Instruments. All rights reserved.

376326A-01 Oct14