

COMPREHENSIVE SERVICES

We offer competitive repair and calibration services, as well as easily accessible documentation and free downloadable resources.

SELL YOUR SURPLUS

We buy new, used, decommissioned, and surplus parts from every NI series. We work out the best solution to suit your individual needs.

 Sell For Cash  Get Credit  Receive a Trade-In Deal

OBSOLETE NI HARDWARE IN STOCK & READY TO SHIP

We stock **New**, **New Surplus**, **Refurbished**, and **Reconditioned** NI Hardware.



Bridging the gap between the manufacturer and your legacy test system.

 1-800-915-6216

 www.apexwaves.com

 sales@apexwaves.com

All trademarks, brands, and brand names are the property of their respective owners.

Request a Quote

 **CLICK HERE**

VB-8034

PRODUCT FLYER

VirtualBench All-in-One Instrument

CONTENTS

[VirtualBench All-in-One Instrument](#)

[Detailed View of VB-8054](#)

[Key Features](#)

[VirtualBench Accessories](#)

[NI-VirtualBench Application Programming Interface \(API\)](#)

[Learn More About VirtualBench](#)

[Hardware Services](#)

VirtualBench All-in-One Instrument

VB-8012, VB-8034, and VB-8054



- **Software:** Includes VirtualBench application, API support for LabVIEW and text-based languages, shipping examples, and detailed help files
- Up to 500 MHz mixed-signal oscilloscope with protocol analysis
- Arbitrary waveform generator with up to 40 MHz sine output
- 5 ½ digit DMM with 300 V input range
- Three-channel programmable DC power supply, up to 3 A
- Eight general-purpose digital I/O lines
- USB, Ethernet, and WiFi connectivity to Windows and Apple iPad software applications

Five Benchtop Instruments. One Unified Interface.

VirtualBench plays a key role in reducing the cost and footprint of test and measurement systems by consolidating five of the most commonly used instruments into one device without compromising the performance of each instrument. Combined with a modern software experience and simple programming interface, VirtualBench creates new efficiencies for engineers interacting with benchtop test equipment or developing low-cost automated test systems.

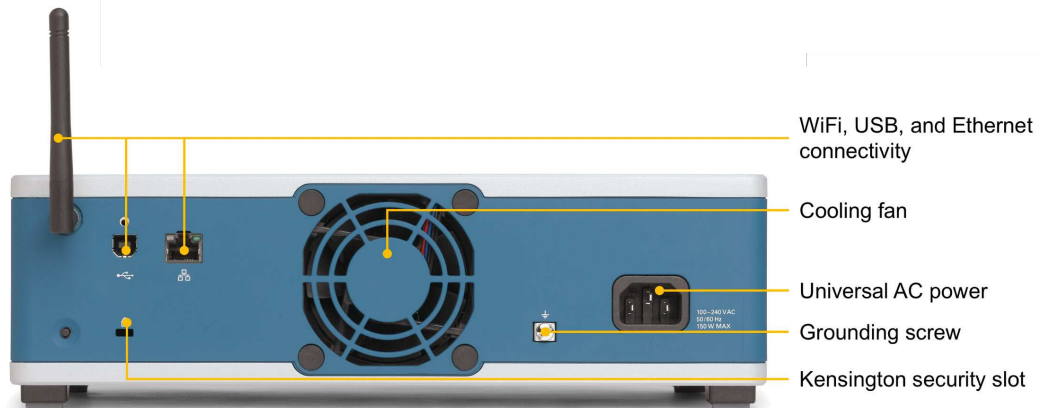
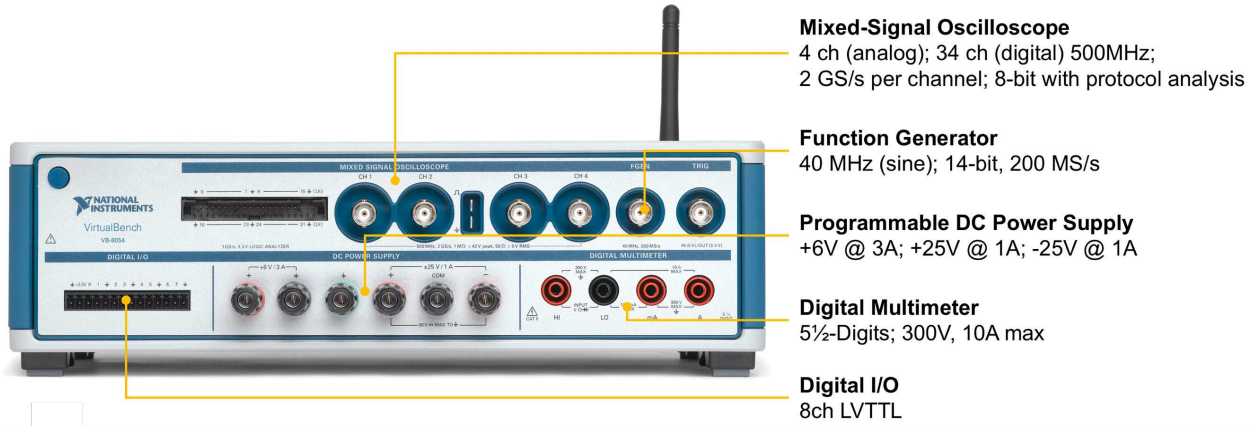
The VirtualBench hardware family currently consists of three models most easily designated by oscilloscope analog bandwidth: 100, 350, and 500 MHz. These models allow the VirtualBench family to serve a wide range of applications and price points in academic labs, hardware characterization/debug benches, and automated test systems.

Table 1. NI offers VirtualBench models ranging from 100 to 500 MHz of analog bandwidth.

| | VB-8012 | VB-8034 | VB-8054 |
|--|---|--------------------------|----------------|
| Mixed-Signal Oscilloscope (MSO) with SPI, I ² C, and Parallel Protocol Analysis | | | |
| Bandwidth | 100 MHz | 350 MHz | 500 MHz |
| Channels | 2 Analog, BNC | 4 Analog, BNC | |
| | 34 Digital | 34 Digital | |
| Sample Rate | 1 GS/s | 1.5 GS/s/channel | 2 GS/s/channel |
| Digital Multimeter | | | |
| Resolution | 5 ½ Digits | | |
| Input Range | 300 V, Category II Isolation | | |
| Measurement Functions | DC voltage, AC voltage, DC current, AC current, resistance, diode, continuity | | |
| Arbitrary Waveform Generator | | | |
| Max Frequency | 20 MHz (sine) | | 40 MHz (sine) |
| Waveform Types | sine, square, ramp/triangle, DC, arbitrary | | |
| DC Power Supply | | | |
| Channel 1 | 0 to 6 V, up to 1 A | 0 to 6 V, up to 3 A | |
| Channel 2 | 0 to -25 V, up to 0.5 A | 0 to -25 V, up to 1 A | |
| Channel 3 | 0 to 25 V, up to 0.5 A | 0 to 25 V, up to 1 A | |
| Digital I/O | | | |
| Channels | 8 Channels | | |
| Logic Levels | 5 V compatible TTL input, 3.3 LVTTTL output | | |
| General | | | |
| Connectivity | USB and WiFi | USB, WiFi, and Ethernet | |
| Size | 10 in. x 7.5 in. x 2.9 in. | 12 in. x 8 in. x 3.7 in. | |
| Interactive Software | Windows (7 SP1 and later), iPad (iOS 9 or later) | | |
| Programming API | LabVIEW, ANSI C, and Python ¹ | | |

¹Python wrapper is community-developed and not officially supported by NI

Detailed View of VB-8054



Key Features

Unified Software Interface

The VirtualBench application requires zero installation and can load automatically via Windows Autoplay when connected through USB. The integrated view of all five instruments allows you to import/export instrument configurations for easier replication of test conditions. VirtualBench also includes software capabilities like digital phosphor density maps for displaying multiple acquisitions simultaneously, XY mode for plotting channels against one another, and hands-free smart capture for automatic data capture of repeated stable waveforms. In order to future-proof any VirtualBench investment, free software and firmware updates are provided as new features are released. These features, in addition to the consolidated interface, help engineers streamline their approach for benchtop characterization and validation.

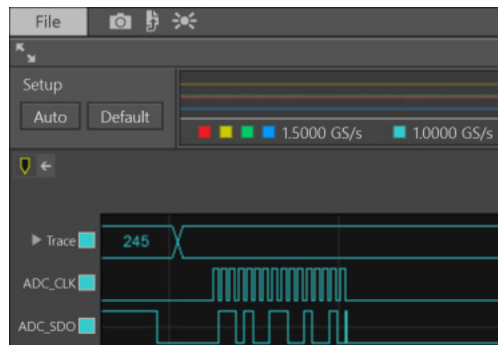


Figure 1: Export screenshots and data using one-click buttons or the hands-free smart capture feature.

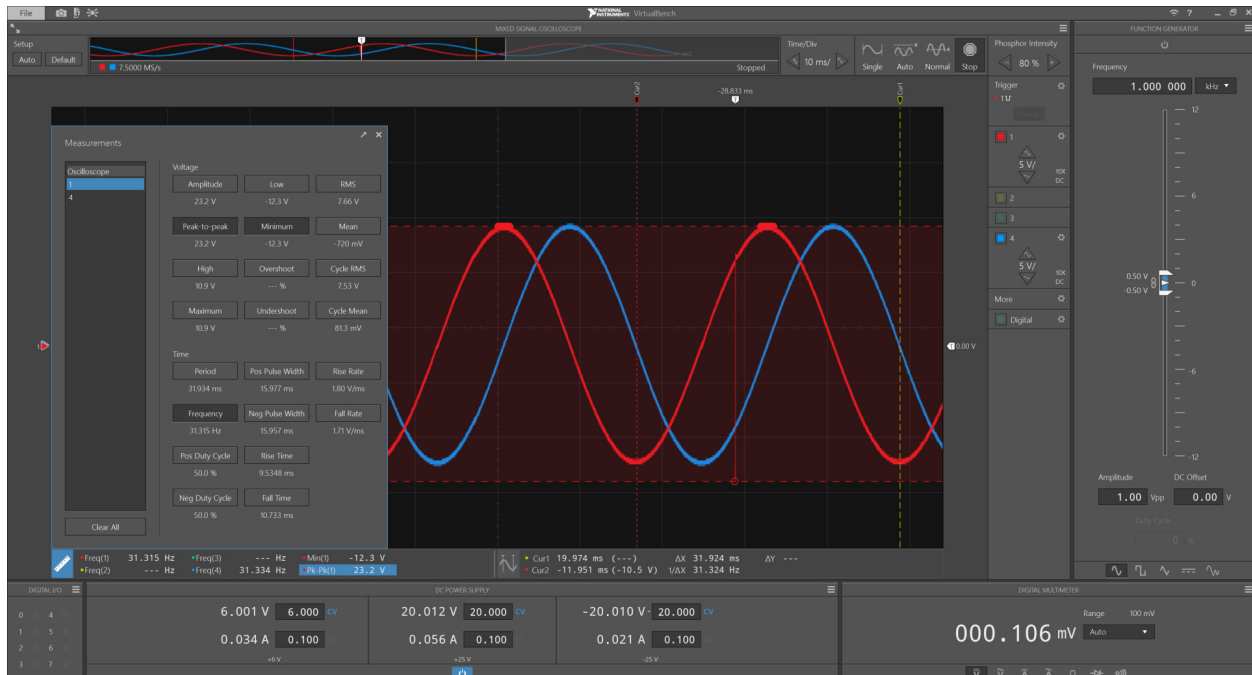


Figure 2: Use measurement indicators to quickly characterize signals like this sine glitch. Choose to display common measurements like amplitude, max/min, RMS, period, and frequency indefinitely beneath the scope graph.

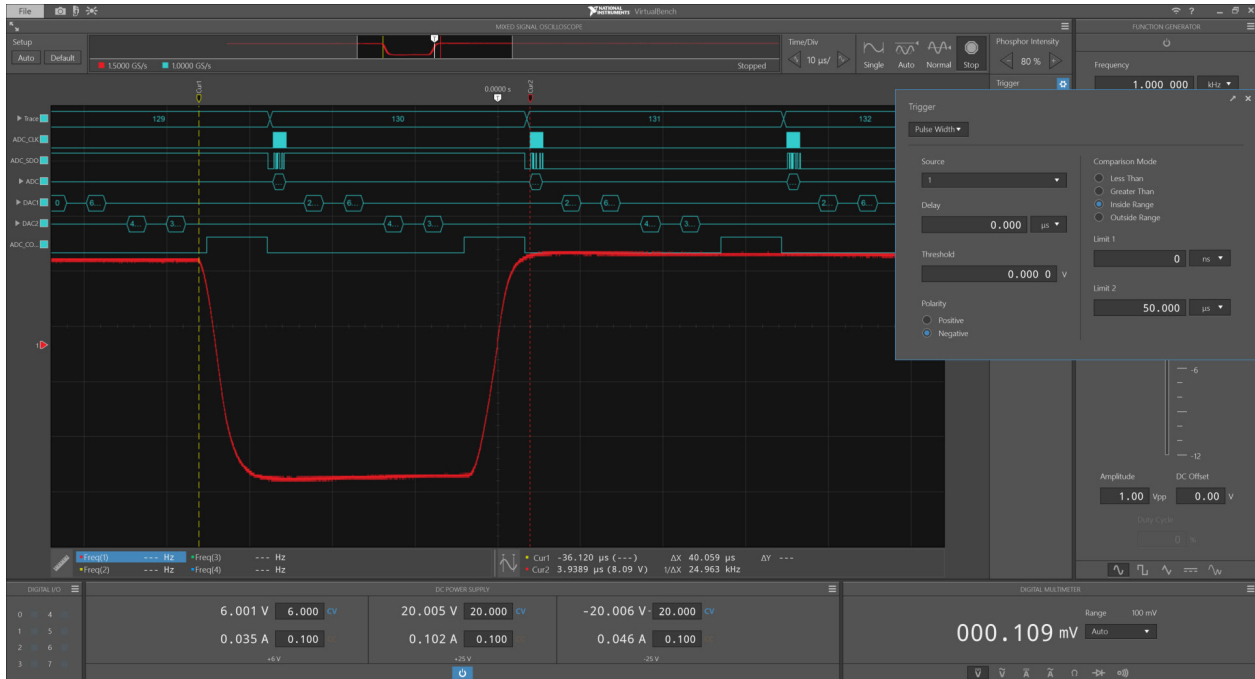


Figure 3: Simplify your measurements using intuitive configuration menus. The configured pulse width trigger reliably captures the displayed signal glitch.

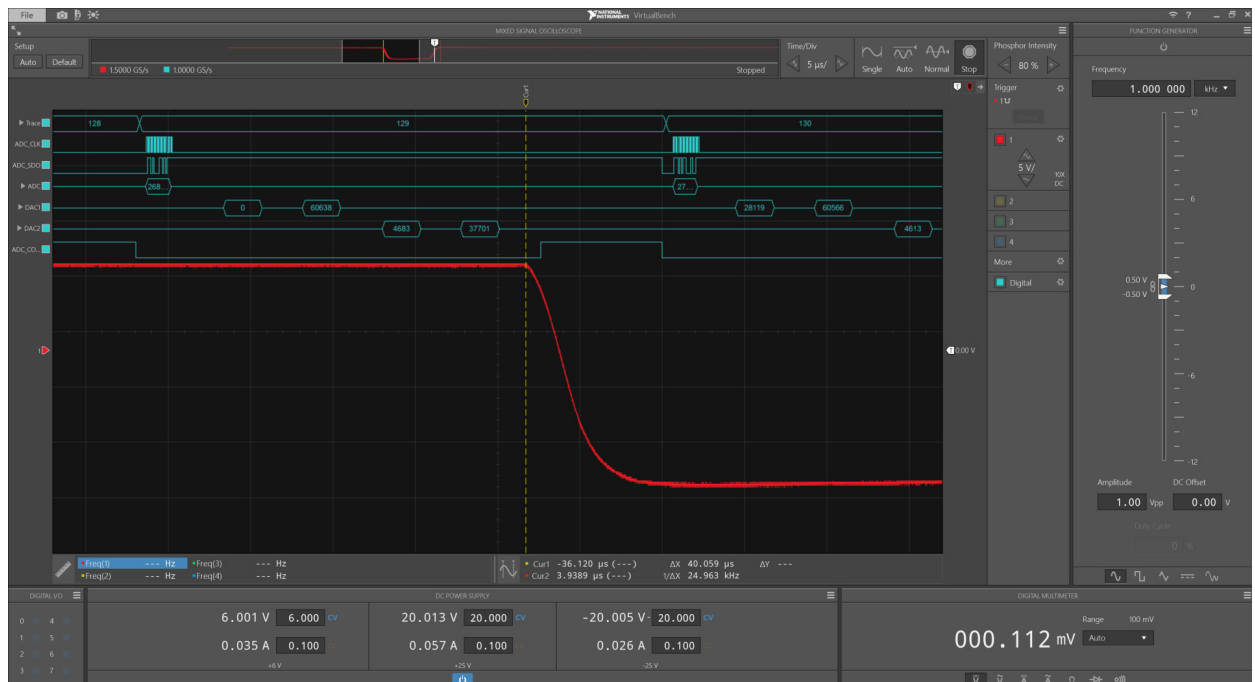


Figure 4: Debug your system more easily by leveraging the built-in protocol decoder alongside the other instruments on the same time scale. The zero registered on the “DAC1” SPI line is likely the culprit of the glitch shown.

VirtualBench Accessories

VirtualBench ships with several accessories to enable common measurements as well as device connection with a PC or iPad.

- Oscilloscope probes (VB-8012: set of two, VB-8034/VB-8054: set of four)
- DMM probes (set of two)
- MSO logic analyzer 40-pin input cable
- Screw-terminal connectors
- NI screwdriver
- Wireless antenna
- USB cable with locking screw (2 m)
- Power cord

Optional Accessories

In addition to the standard, included accessories, NI has several optional accessories available that further extend the capabilities of VirtualBench.



Binding Post Adapter
(VB-8012 only)



Soft Carrying Case



Desktop Mounting Kit
(VB-8012 only)



Accessory Pouch



Rack Mount Shelf



Logic Analyzer Grabbers
(set of six)



DMM Alligator Clips, Spade
Connectors, & Spring
Hooks (P2 Probe Set)



FGEN BNC Male to
Micrograbber (87 cm)



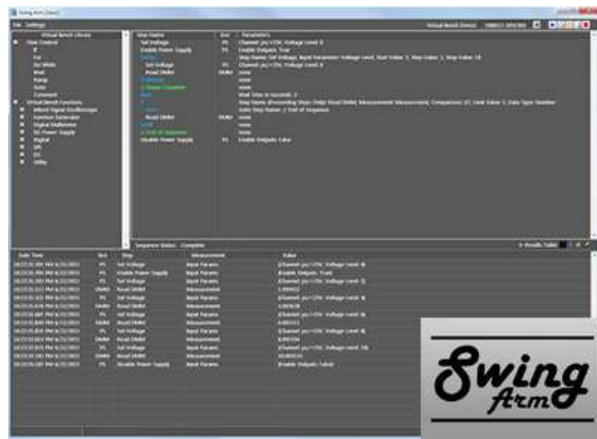
BNC Cable, 50 Ohm Male
to Male (2 m)



USB Cable with Locking
Screw (1 or 2 m)

Third Party Accessories and Software

Additional industrial accessories have been developed for VirtualBench and are available through alliance partners or the LabVIEW Tools Network.



NI Alliance partner 10X Engineering LLC developed an [uninterruptible power supply](#) for the VB-8012, further enabling field work with limited resources.

Clustr, Inc's [SwingArm](#) software incorporates drag and drop methodology to create sequences of VirtualBench settings and measurements, ideal for design verification testing as well as repetitive measurements.

Academic Curriculum

Developed in collaboration with the University of Virginia, the free downloadable [ECE Fundamentals 1 curriculum](#) leverages both VirtualBench and Multisim to simulate, create, and test circuits with specific analysis methods. The course series aims to redefine teaching of core electrical and computer engineering topics with an innovative, breadth-first approach.

ECE Fundamentals I (v. Instructor)

Developed in Collaboration with

Introduction

Course Map

Labs

| | | | |
|----|---|----|----|
| 0 | 1 | 2 | 3 |
| 4 | 5 | 6 | 7 |
| 8 | 9 | 10 | 11 |
| 12 | | | |

Final Project

Additional Resources

Preview of FUN 2

< previous | next >

A note from the authors:

We envision engineering education pedagogy as being at a crossroads, especially as it relates to electrical and computer engineering. An overarching goal of an engineering education is to allow students to develop an appreciation that large scale systems are assembled from smaller building blocks and that a truly professional designer must have a sense of both. We at UVA are addressing these concerns with a new core curriculum for electrical and computer engineers, the *Fundamentals of Electrical Engineering Series*, a 3-course sequence. These courses replace our prior sequence: *Circuits*, *Electronics*, and *Signals and Systems* and are taught with a breadth-first approach in a studio style.

The laboratories in this set are designed to mesh with *Fundamentals I*, our introductory course in the basic principles of electrical and computer engineering. They cover virtually all topics that might be found at the first level and are easily adapted to a variety of learning environments. We create a systematic approach that gradually deepens a student's level of understanding while keeping individual laboratories manageable. These labs make extensive use of the capabilities of the NI VirtualBench and allow experiential lab work to be performed in a relatively small, multi-purpose physical space.

Additional laboratories based on VirtualBench have been developed through partners and are available for purchase on [LabStore](#), such as the [Electrical Measurements Lab](#), [Fault Detection and Correction Lab](#), and [Electronic Components Characterization Lab](#).

NI-VirtualBench Application Programming Interface (API)

In addition to the VirtualBench application, the [NI-VirtualBench driver](#) includes a best-in-class API that works with a variety of development options such as LabVIEW and C. The driver also provides access to help files, documentation, and [online examples](#) you can use as a starting point for your application.

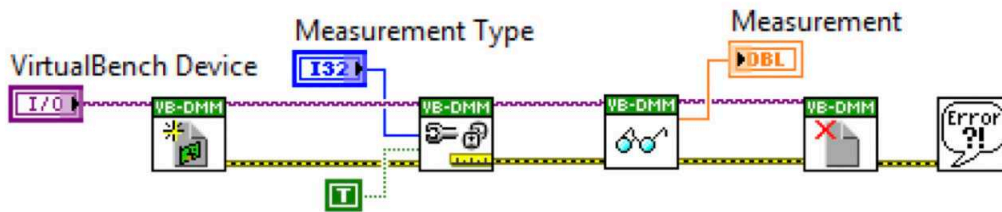


Figure 5: Example LabVIEW code to take a DMM reading on the VirtualBench.

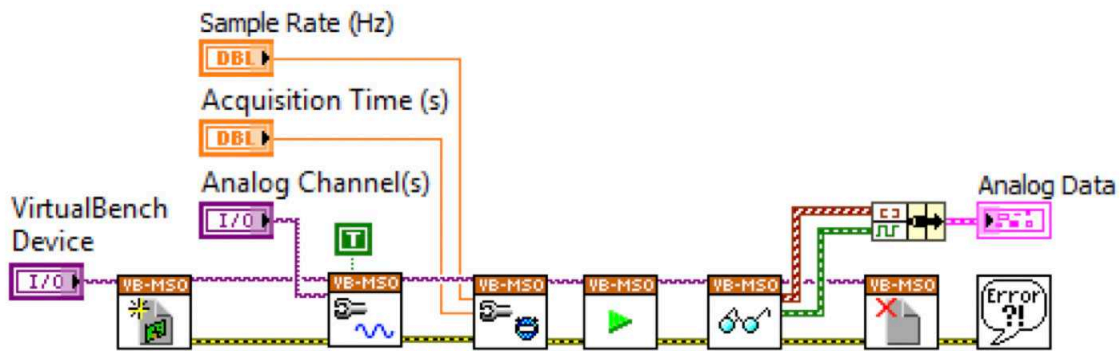
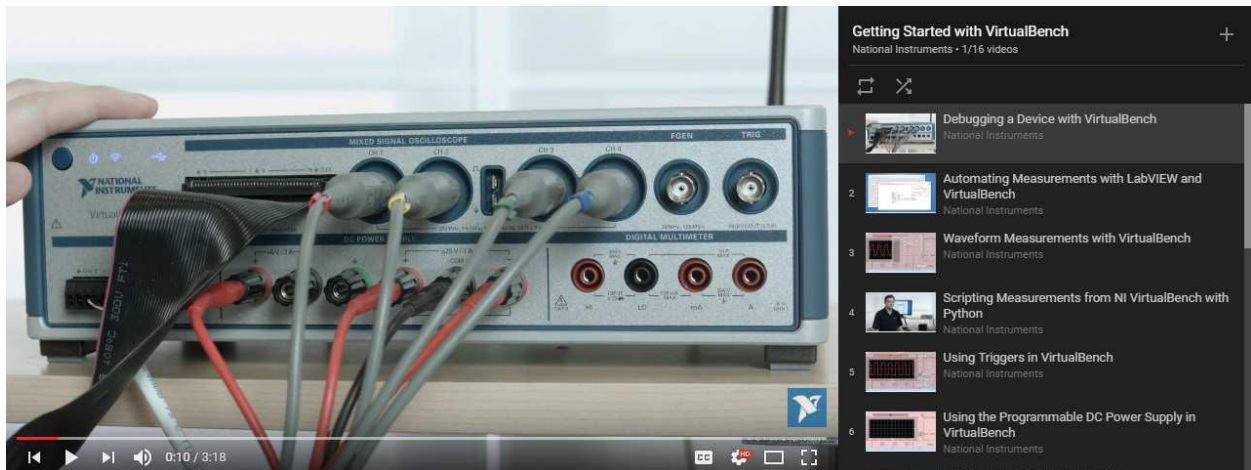


Figure 6: Example LabVIEW code to take an oscilloscope measurement on the VirtualBench.

Learn More About VirtualBench

To learn more about the capabilities of VirtualBench, you can watch the series of instructional videos linked through the image below.



Hardware Services

All NI hardware includes a one-year warranty for basic repair coverage, and calibration in adherence to NI specifications prior to shipment. PXI Systems also include basic assembly and a functional test. NI offers additional entitlements to improve uptime and lower maintenance costs with service programs for hardware. Learn more at ni.com/services/hardware.

| | Standard | Premium | Description |
|---|--------------|------------------------|---|
| Program Duration | 3 or 5 years | 3 or 5 years | Length of service program |
| Extended Repair Coverage | • | • | NI restores your device's functionality and includes firmware updates and factory calibration. |
| System Configuration, Assembly, and Test ¹ | • | • | NI technicians assemble, install software in, and test your system per your custom configuration prior to shipment. |
| Advanced Replacement ² | | • | NI stocks replacement hardware that can be shipped immediately if a repair is needed. |
| System Return Material Authorization (RMA) ¹ | | • | NI accepts the delivery of fully assembled systems when performing repair services. |
| Calibration Plan (Optional) | Standard | Expedited ³ | NI performs the requested level of calibration at the specified calibration interval for the duration of the service program. |

¹This option is only available for PXI, CompactRIO, and CompactDAQ systems.

²This option is not available for all products in all countries. Contact your local NI sales engineer to confirm availability.

³Expedited calibration only includes traceable levels.

PremiumPlus Service Program

NI can customize the offerings listed above, or offer additional entitlements such as on-site calibration, custom sparring, and life-cycle services through a PremiumPlus Service Program. Contact your NI sales representative to learn more.

Technical Support

Every NI system includes a 30-day trial for phone and e-mail support from NI engineers, which can be extended through a [Software Service Program \(SSP\)](#) membership. NI has more than 400 support engineers available around the globe to provide local support in more than 30 languages. Additionally, take advantage of NI's award winning [online resources](#) and [communities](#).

©2019 National Instruments. All rights reserved. LabVIEW, National Instruments, NI, NI TestStand, and ni.com are trademarks of National Instruments. Other product and company names listed are trademarks or trade names of their respective companies. The contents of this Site could contain technical inaccuracies, typographical errors or out-of-date information. Information may be updated or changed at any time, without notice. Visit ni.com/manuals for the latest information.

10 December 2019