

## COMPREHENSIVE SERVICES

We offer competitive repair and calibration services, as well as easily accessible documentation and free downloadable resources.

## SELL YOUR SURPLUS

We buy new, used, decommissioned, and surplus parts from every NI series. We work out the best solution to suit your individual needs.

 Sell For Cash    Get Credit    Receive a Trade-In Deal

## OBSOLETE NI HARDWARE IN STOCK & READY TO SHIP

We stock **New, New Surplus, Refurbished, and Reconditioned** NI Hardware.



*Bridging the gap between the manufacturer and your legacy test system.*

 1-800-915-6216

 [www.apexwaves.com](http://www.apexwaves.com)

 [sales@apexwaves.com](mailto:sales@apexwaves.com)

*All trademarks, brands, and brand names are the property of their respective owners.*

**Request a Quote**

 **CLICK HERE**

**VXIpc-850**

## ***VXIplug&play* Software Kit** **NI-VISA™ for Windows 3.x** **WIN and GWIN Frameworks**

Thank you for purchasing a National Instruments *VXIplug&play*-compliant controller. To be compliant with *VXIplug&play* specifications, a VXI controller must provide the VISA I/O driver library standardized by *VXIplug&play*. VISA ensures that your controller can run all *VXIplug&play*-compatible software now and in the future, while NI-VXI and NI-488.2 ensure that your controller can run the installed base of drivers and applications. The NI-VXI and/or NI-488.2 driver software components are included with your controller, and the documentation that accompanies your controller describes how to install and use them. This *VXIplug&play* software kit includes NI-VISA, which is the National Instruments implementation of VISA, and related documentation. This document describes how to use the Setup program to install your NI-VISA software.

The NI-VISA software in this kit is compatible with both the WIN and GWIN frameworks. With NI-VISA installed on your computer, you can run any *VXIplug&play* software that is compatible with these frameworks. This includes instrument drivers and executable soft front panel software that are included with *VXIplug&play*-compatible instruments from a variety of vendors.

Please also see the `readme.txt` file included with your software for the most up-to-date information about this release of NI-VISA.

## **Components**

The *VXIplug&play* software kit contains the following software and documentation components.

### **Software**

- VISA 1.0 Dynamic Link Library
- VISA 1.0 Microsoft C and Borland C Import Libraries
- VISA 1.0 Microsoft Visual Basic Support Files

- VISA 1.0 Support Files for LabWindows<sup>®</sup>/CVI version 3.1
- VISA 1.0 GPIB-VXI Component
- VPP-6 Compliant Windows 3.x Installer

## Documentation

- *NI-VISA Programmer Reference Manual*
- *NI-VISA User Manual*

## Supported Application Development Environments

The following Application Development Environments (ADEs) are supported with this release of NI-VISA for Windows 3.x.

- LabVIEW version 4.0
- LabWindows/CVI version 3.1
- Borland C/C++ version 4.5.x
- Microsoft Visual C/C++ version 1.5.x
- Microsoft Visual Basic version 3 or 4



**Note:** *Although NI-VISA has been tested and found to work with these ADEs, other ADEs or higher versions of the ADEs listed above may also work.*

## Installation Procedures

### Step 1. Install Your NI-VXI/NI-488.2 Driver Software

The installation method varies depending on the type of controller you have purchased, as shown in the following table. Refer to the documentation that came with your controller for detailed installation instructions.

Controller	Installation
VXIpc-486 or VXIpc-850 embedded controller	NI-VXI and NI-488.2 are already installed on your hard drive.
VXI-AT2010 MXI controller VXI-AT4000 MXI controller VXI-PCI8000 MXI controller	Install the NI-VXI for Windows software.
GPIB-VXI/C controller or any National Instruments GPIB board that has a Windows 3.x driver	Install the NI-488.2 for Windows software.

You can also use a National Instruments serial board that works along with the serial ports on your computer. In this case you do not need to install NI-VXI or NI-488.2.

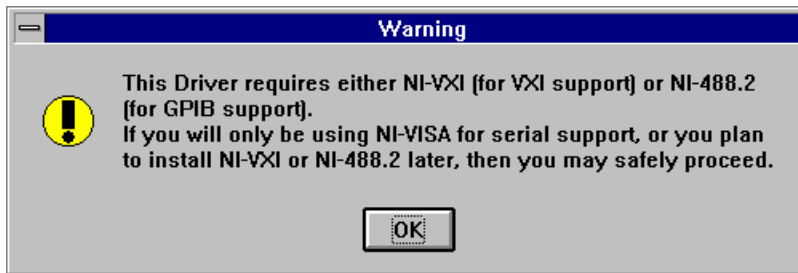
## Step 2. Install Your NI-VISA Software

Controller	Installation
VXIpc-486 or VXIpc-850 embedded controller	<p><b>New VXIpc controllers:</b> NI-VISA is already installed on your hard drive. The remainder of this document applies only if you want to use the Setup program to make changes to your software.</p> <p><b>Upgrades:</b> If you received this kit to upgrade your VXIpc, continue with the rest of this document to install the NI-VISA software.</p>
All other cases	Install the NI-VISA software. The remainder of this document describes how to use the Setup program to install your software.

### Start the Setup Program

Insert the NI-VISA diskette into your disk drive. You can run `SETUP.EXE` from the Program Manager **File..Run** menu.

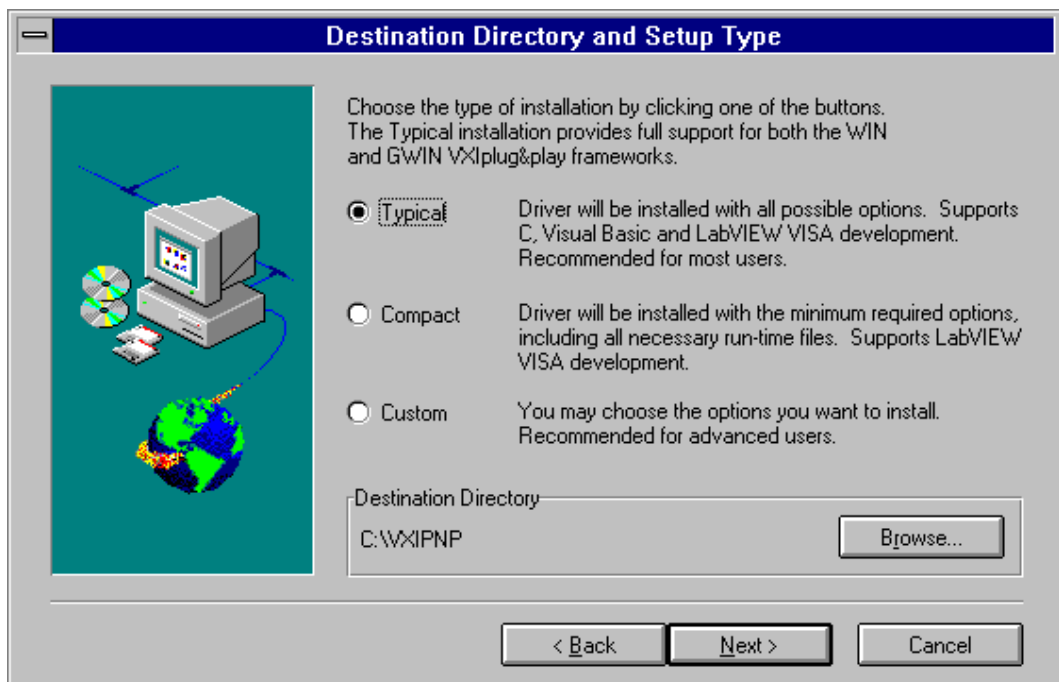
The following warning screen pops up if applicable.



If this situation applies, click **OK** but exit the main screen when it appears. As mentioned earlier, you should already have installed NI-488.2 and/or NI-VXI according to the instructions contained in its accompanying documentation.

## Installation Options

The following screen is a typical main menu.



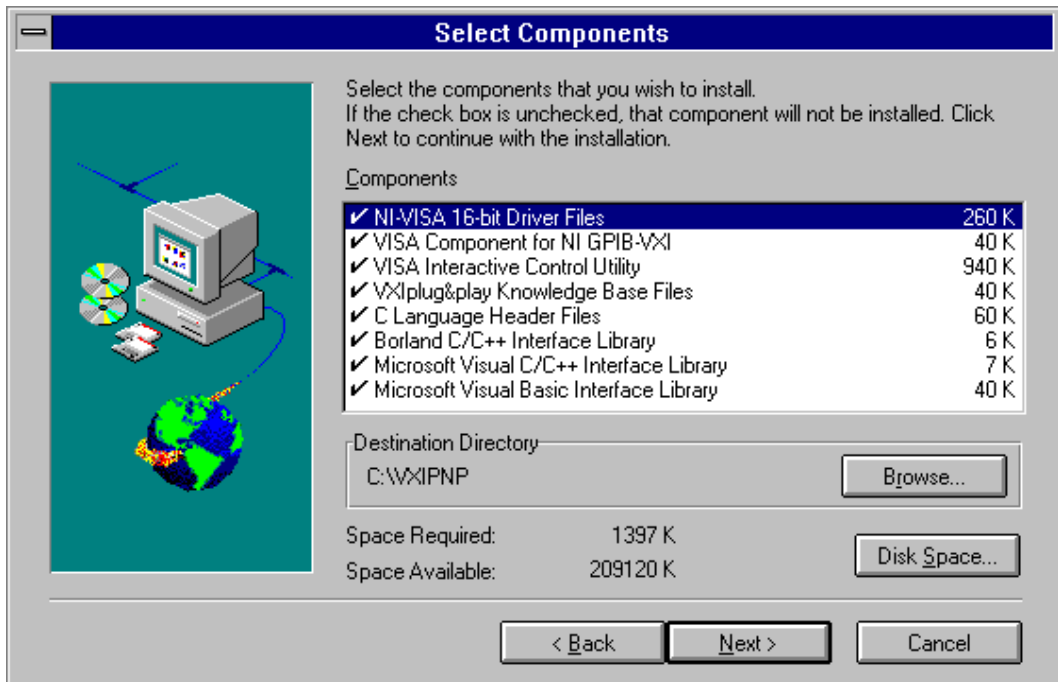
The **Destination Directory** specifies where all *VXIplug&play* files will reside. As shown in the main menu, the installer creates the directory structure under C: \VXIIPNP directory by default.



**Note:** *Although you can change the destination directory, it must end in \VXIIPNP. This ensures VPP-6 compliance for the WIN and GWIN frameworks only.*

You can use the options on this screen to select different types of installation. The **Typical** installation, the default selection, installs the most common options including development and run-time support for 16-bit VISA applications.

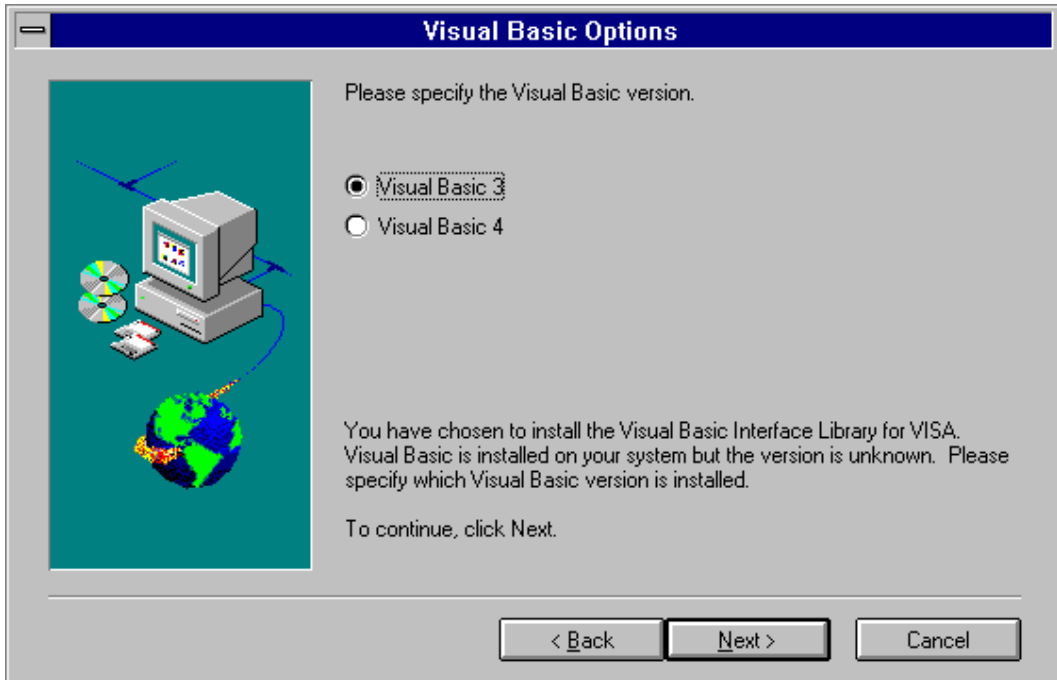
Typically, you would press the **Next** button to accept the suggested options. Otherwise, press **Custom** to change any or all of the installation options. When you select the **Custom** option, the following screen appears. If you did not select the **Custom** option, skip to the next section.



You can use the **Custom** option to select only those components you want to install on your computer. You can either select or deselect any options by clicking on them. By default, all the options are selected.

## Visual Basic Option

If you have Visual Basic installed on your system and you have chosen to install the Microsoft Visual Basic Interface Library, you need to specify whether you have Visual Basic version 3 or 4. Click **Next** to continue.



## LabWindows/CVI Run-Time Engine

If you have chosen to install the VISA Interactive Control utility and you do not already have the LabWindows/CVI Run-Time Engine installed on your computer, you may install it at this time. If you choose to install it, the following screen appears. Specify the source location and click **Next**.



## Modifying System Files

Setup modifies your WIN.INI and AUTOEXEC.BAT files as follows.

### WIN.INI

Setup adds the following lines to your WIN.INI file. The following text assumes you have chosen C:\VXIPNP as your installation directory.

```
[VXIPNP]  
VPNPPATH=C:\
```



## AUTOEXEC.BAT

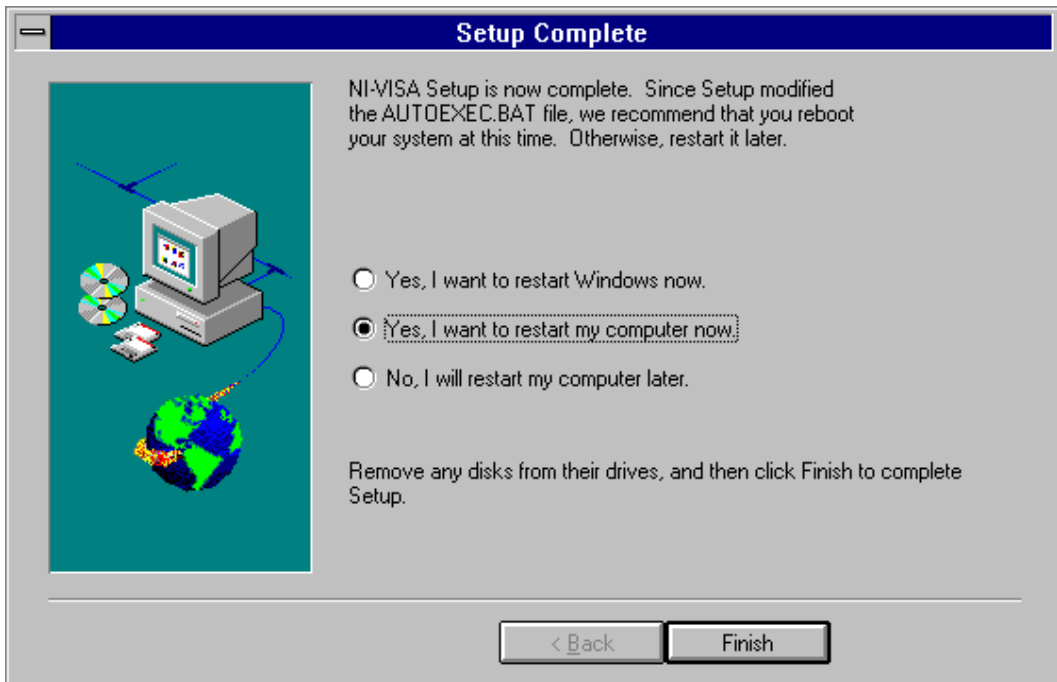
Under the **Typical** and **Compact** options, Setup automatically updates your AUTOEXEC.BAT file to set the PATH and VXIPNPPATH environment variables. Under the **Custom** option, Setup prompts you to confirm the modifications to the AUTOEXEC.BAT file before it updates the file. Setup then adds the following lines to the end of AUTOEXEC.BAT:

```
SET VPNPPATH=C:\
SET PATH=%PATH%;C:\VXIPNP\WIN\BIN
```

## Exiting the Setup Program

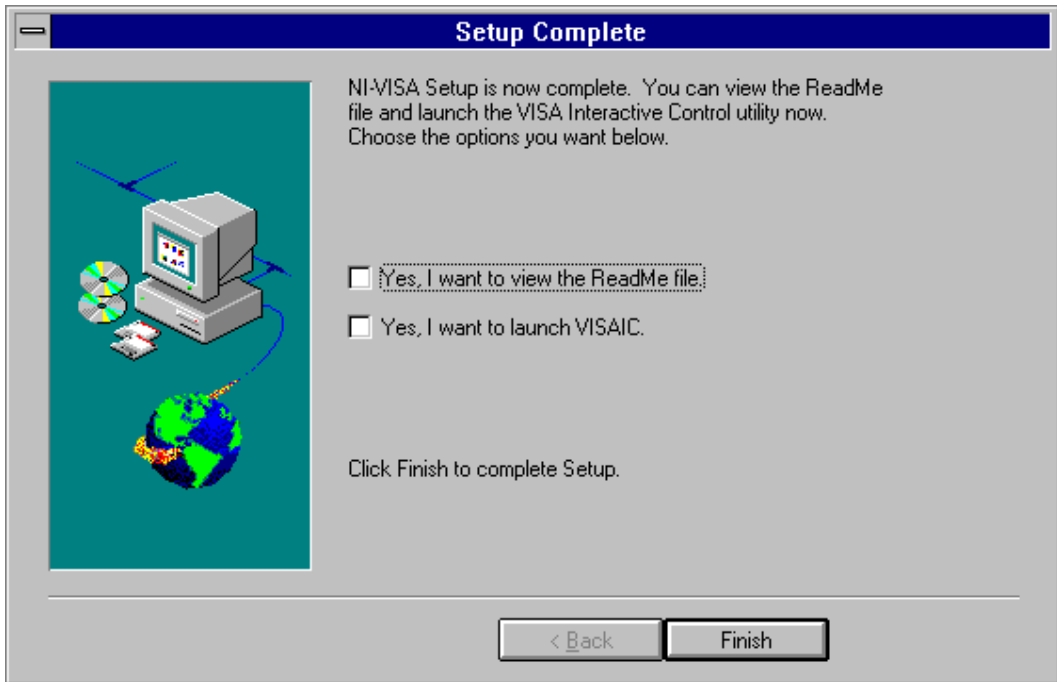
The Setup program completes differently depending on whether the AUTOEXEC.BAT file has been modified.

If the AUTOEXEC.BAT file has been modified, the following screen appears after a successful installation:



You can either reboot the computer now so that the changes take effect immediately, or you can reboot the computer at a later time, but you should not use the NI-VISA software until you have rebooted your computer.

If the AUTOEXEC.BAT file has not been modified, the following screen appears.



You can view the ReadMe file to get important tips on using the NI-VISA driver.

## Updating the NI-VISA Setup

You can run the Setup program again to accommodate changes you want to make. The same screens and messages will be displayed as when you previously installed the software. Select the **Custom** option to configure any changes.

## Step 3. Install Your VISA Support Files for LabWindows/CVI Version 3.1

This step is necessary only if you are using LabWindows/CVI version 3.1 as a VISA application development environment (ADE). You can run the Setup program on the *VISA 1.0 Support Files for LabWindows/CVI 3.1 for Windows 3.x* diskette to install VISA function panels and the C language header files into the appropriate LabWindows/CVI directories.

áZZYF1Gää

ZZYF1G

\* 321216A

321216A-01

March 1996