

COMPREHENSIVE SERVICES

We offer competitive repair and calibration services, as well as easily accessible documentation and free downloadable resources.

SELL YOUR SURPLUS

We buy new, used, decommissioned, and surplus parts from every NI series. We work out the best solution to suit your individual needs.

 Sell For Cash  Get Credit  Receive a Trade-In Deal

OBSOLETE NI HARDWARE IN STOCK & READY TO SHIP

We stock **New**, **New Surplus**, **Refurbished**, and **Reconditioned** NI Hardware.



Bridging the gap between the manufacturer and your legacy test system.

 1-800-915-6216

 www.apexwaves.com

 sales@apexwaves.com

All trademarks, brands, and brand names are the property of their respective owners.

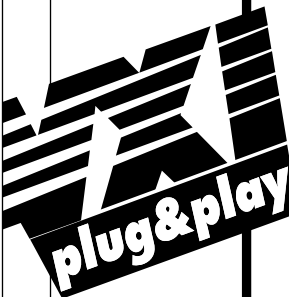
Request a Quote

 **CLICK HERE**

VXIpc-860

Getting Started with Your VXIpc™ 800/700 Series for Windows 95/NT

September 1997 Edition
Part Number 321743A-01





Internet Support

support@natinst.com

E-mail: info@natinst.com

FTP Site: ftp.natinst.com

Web Address: <http://www.natinst.com>



Bulletin Board Support

BBS United States: (512) 794-5422

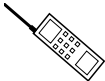
BBS United Kingdom: 01635 551422

BBS France: 01 48 65 15 59



Fax-on-Demand Support

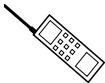
(512) 418-1111



Telephone Support (U.S.)

Tel: (512) 795-8248

Fax: (512) 794-5678



International Offices

Australia 03 9879 5166, Austria 0662 45 79 90 0, Belgium 02 757 00 20,
Canada (Ontario) 905 785 0085, Canada (Québec) 514 694 8521, Denmark 45 76 26 00,
Finland 09 725 725 11, France 01 48 14 24 24, Germany 089 741 31 30,
Hong Kong 2645 3186, Israel 03 5734815, Italy 02 413091, Japan 03 5472 2970,
Korea 02 596 7456, Mexico 5 520 2635, Netherlands 0348 433466, Norway 32 84 84 00,
Singapore 2265886, Spain 91 640 0085, Sweden 08 730 49 70, Switzerland 056 200 51 51,
Taiwan 02 377 1200, United Kingdom 01635 523545

National Instruments Corporate Headquarters

6504 Bridge Point Parkway Austin, TX 78730-5039 Tel: (512) 794-0100

Important Information

Warranty

The National Instruments VXIpc 800/700 Series embedded computers and accessories are warranted against defects in materials and workmanship for a period of one year from the date of shipment, as evidenced by receipts or other documentation. National Instruments will, at its option, repair or replace equipment that proves to be defective during the warranty period. This warranty includes parts and labor.

The media on which you receive National Instruments software are warranted not to fail to execute programming instructions, due to defects in materials and workmanship, for a period of 90 days from date of shipment, as evidenced by receipts or other documentation. National Instruments will, at its option, repair or replace software media that do not execute programming instructions if National Instruments receives notice of such defects during the warranty period. National Instruments does not warrant that the operation of the software shall be uninterrupted or error free.

A Return Material Authorization (RMA) number must be obtained from the factory and clearly marked on the outside of the package before any equipment will be accepted for warranty work. National Instruments will pay the shipping costs of returning to the owner parts which are covered by warranty.

National Instruments believes that the information in this manual is accurate. The document has been carefully reviewed for technical accuracy. In the event that technical or typographical errors exist, National Instruments reserves the right to make changes to subsequent editions of this document without prior notice to holders of this edition. The reader should consult National Instruments if errors are suspected. In no event shall National Instruments be liable for any damages arising out of or related to this document or the information contained in it.

EXCEPT AS SPECIFIED HEREIN, NATIONAL INSTRUMENTS MAKES NO WARRANTIES, EXPRESS OR IMPLIED, AND SPECIFICALLY DISCLAIMS ANY WARRANTY OF MERCHANTABILITY OR FITNESS FOR A PARTICULAR PURPOSE. CUSTOMER'S RIGHT TO RECOVER DAMAGES CAUSED BY FAULT OR NEGLIGENCE ON THE PART OF NATIONAL INSTRUMENTS SHALL BE LIMITED TO THE AMOUNT THEREFORE PAID BY THE CUSTOMER. NATIONAL INSTRUMENTS WILL NOT BE LIABLE FOR DAMAGES RESULTING FROM LOSS OF DATA, PROFITS, USE OF PRODUCTS, OR INCIDENTAL OR CONSEQUENTIAL DAMAGES, EVEN IF ADVISED OF THE POSSIBILITY THEREOF. This limitation of the liability of National Instruments will apply regardless of the form of action, whether in contract or tort, including negligence. Any action against National Instruments must be brought within one year after the cause of action accrues. National Instruments shall not be liable for any delay in performance due to causes beyond its reasonable control. The warranty provided herein does not cover damages, defects, malfunctions, or service failures caused by owner's failure to follow the National Instruments installation, operation, or maintenance instructions; owner's modification of the product; owner's abuse, misuse, or negligent acts; and power failure or surges, fire, flood, accident, actions of third parties, or other events outside reasonable control.

Copyright

Under the copyright laws, this publication may not be reproduced or transmitted in any form, electronic or mechanical, including photocopying, recording, storing in an information retrieval system, or translating, in whole or in part, without the prior written consent of National Instruments Corporation.

Trademarks

LabVIEW®, CVI™, NI-488.2™, NI-VISA™, NI-VXI™, TNT™, and VXIpc™ are trademarks of National Instruments Corporation.

Product and company names listed are trademarks or trade names of their respective companies.

WARNING REGARDING MEDICAL AND CLINICAL USE OF NATIONAL INSTRUMENTS PRODUCTS

National Instruments products are not designed with components and testing intended to ensure a level of reliability suitable for use in treatment and diagnosis of humans. Applications of National Instruments products involving medical or clinical treatment can create a potential for accidental injury caused by product failure, or by errors on the part of the user or application designer. Any use or application of National Instruments products for or involving medical or clinical treatment must be performed by properly trained and qualified medical personnel, and all traditional medical safeguards, equipment, and procedures that are appropriate in the particular situation to prevent serious injury or death should always continue to be used when National Instruments products are being used. National Instruments products are NOT intended to be a substitute for any form of established process, procedure, or equipment used to monitor or safeguard human health and safety in medical or clinical treatment.

FCC/DOC Radio Frequency Interference Class A Compliance

This equipment generates and uses radio frequency energy and, if not installed and used in strict accordance with the instructions in this manual, may cause interference to radio and television reception. Classification requirements are the same for the Federal Communications Commission (FCC) and the Canadian Department of Communications (DOC). This equipment has been tested and found to comply with the following two regulatory agencies:

Federal Communications Commission

This equipment has been tested and found to comply with the limits for a Class A digital device, pursuant to part 15 of the FCC Rules. These limits are designed to provide reasonable protection against harmful interference when the equipment is operated in a commercial environment. This equipment generates, uses, and can radiate radio frequency energy and, if not installed and used in accordance with the instruction manual, may cause harmful interference to radio communications. Operation of this equipment in a residential area is likely to cause harmful interference in which case the user will be required to correct the interference at his own expense.

Notices to User: *Changes or modifications not expressly approved by National Instruments could void the user's authority to operate the equipment under the FCC Rules.*

This device complies with the FCC rules only if used with shielded interface cables of suitable quality and construction. National Instruments used such cables to test this device and provides them for sale to the user. The use of inferior or nonshielded interface cables could void the user's authority to operate the equipment under the FCC rules.

If necessary, consult National Instruments or an experienced radio/television technician for additional suggestions. The following booklet prepared by the FCC may also be helpful: *Interference to Home Electronic Entertainment Equipment Handbook*. This booklet is available from the U.S. Government Printing Office, Washington, DC 20402.

Canadian Department of Communications

This Class A digital apparatus meets all requirements of the Canadian Interference-Causing Equipment Regulations.

Cet appareil numérique de la classe A respecte toutes les exigences du Règlement sur le matériel brouilleur du Canada.

About This Manual

Organization of This Manual	vii
Conventions Used in This Manual	viii
How to Use This Documentation Set	ix
Related Documentation	x
Customer Communication	xi

Chapter 1

Introduction

How to Use This Manual	1-1
What You Need to Get Started	1-1
Hardware Description	1-2
Software Description	1-2
Software Configurations	1-4
National Instruments Application Software	1-4
Files and Directories Installed on Your Hard Drive	1-5

Chapter 2

Setup

Configuring the Hardware	2-1
Installing the Hardware	2-2
Installed Software	2-3
Booting Your System for the First Time	2-3
Verifying Your System Configuration	2-4

Chapter 3

Developing Your Application

Configuration	3-1
Device Interaction	3-2
Programming with VXI	3-3
VME Support	3-5
Compiler Symbols for NI-VXI	3-5
Debugging	3-6

Appendix A Default Settings

Appendix B Common Questions

Appendix C Reinstalling the NI-VXI/VISA Software

Appendix D Customer Communication

Glossary

Index

Tables

Table 3-1.	NI-VXI/VISA Examples	3-4
Table A-1.	VXIpc 800 Series Hardware Default Settings.....	A-1
Table A-2.	VXIpc 700 Series Hardware Default Settings.....	A-2
Table A-3.	VXIpc T&M Explorer Device Tab Default Settings.....	A-2
Table A-4.	VXIpc T&M Explorer Shared Memory Tab Default Settings	A-3
Table A-5.	VXIpc T&M Explorer PCI Tab Default Settings.....	A-3
Table A-6.	VXI/VME-MXI-2 T&M Explorer Device Tab Default Settings	A-4
Table A-7.	VXI/VME-MXI-2 T&M Explorer VXI/VME Bus Tab Default Settings	A-4
Table A-8.	VXI/VME-MXI-2 T&M Explorer MXI-2 Bus Tab Default Settings ...	A-5

Use this manual to get started with the VXIpc 800/700 Series embedded computers and the NI-VXI/VISA software for Windows 95/NT. This manual summarizes the setup instructions and default settings for the hardware and software. You may find that these sections contain all the information you need to get started with your VXIpc 800/700 kit.

Organization of This Manual




This manual is organized as follows:

- Chapter 1, *Introduction*, describes the VXIpc 800/700 Series of embedded VXI computers along with the NI-VXI/VISA software, lists what you need to get started, lists optional software, and gives an overview of the directory structure on your hard drive.
- Chapter 2, *Setup*, contains basic instructions for setting up the VXIpc 800/700 and the NI-VXI/VISA software.
- Chapter 3, *Developing Your Application*, discusses the software utilities you can use to start developing applications that use the NI-VXI/VISA driver.
- Appendix A, *Default Settings*, summarizes the hardware and software default settings for the hardware and software in your kit.
- Appendix B, *Common Questions*, addresses common questions you may have about using the NI-VXI/VISA software on the VXIpc platform.
- Appendix C, *Reinstalling the NI-VXI/VISA Software*, contains the instructions on how to reinstall your NI-VXI/VISA software. Your VXIpc 800/700 was shipped with the NI-VXI/VISA software already installed. You do not need to use these instructions unless a problem with your hard drive makes your software inaccessible.
- Appendix D, *Customer Communication*, contains forms you can use to request help from National Instruments or to comment on our products and manuals.

- The *Glossary* contains an alphabetical list and description of terms used in this manual, including abbreviations, acronyms, metric prefixes, mnemonics, and symbols.
- The *Index* contains an alphabetical list of key terms and topics in this manual, including the page where you can find each one.

Conventions Used in This Manual

The following conventions are used in this manual:

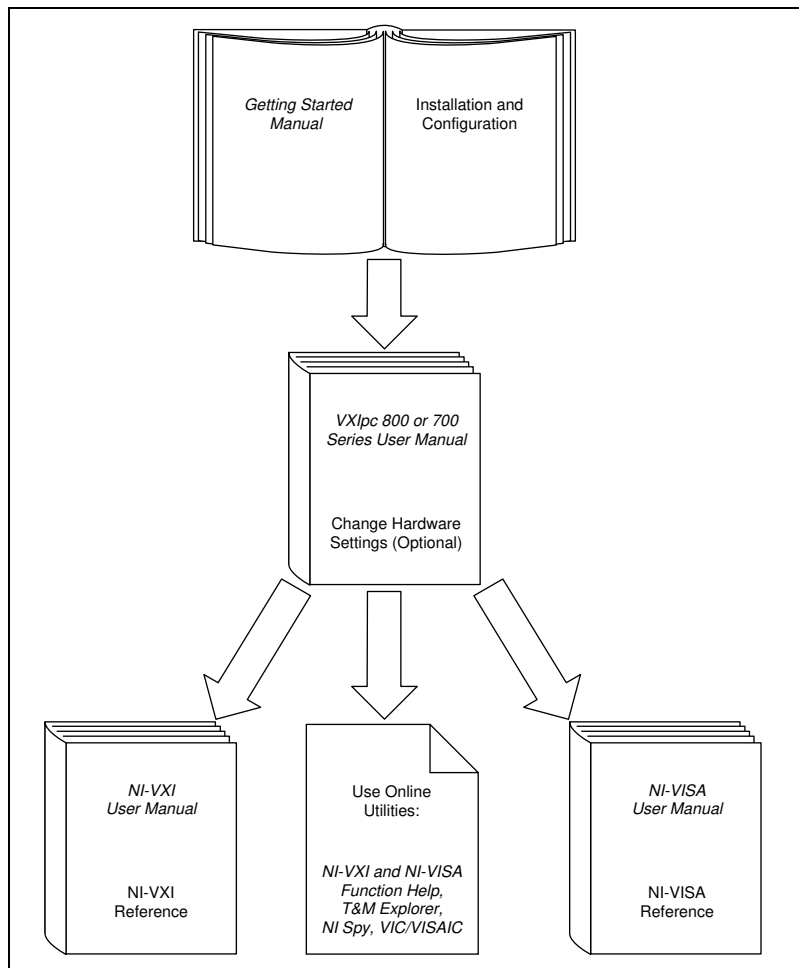
◆	The ◆ symbol indicates that the text following it applies only to a specific product, a specific operating system, or a specific software version.
	This icon to the left of bold italicized text denotes a note, which alerts you to important information.
	This icon to the left of bold italicized text denotes a caution, which advises you of precautions to take to avoid injury, data loss, or a system crash.
	This icon to the left of bold italicized text denotes a warning, which advises you of precautions to take to avoid being electrically shocked.
bold	Bold text denotes the names of menus, menu items, or dialog box buttons or options.
bold monospace	Bold text in this font denotes the messages and responses that the computer automatically prints to the screen.
<i>italic</i>	Italic text denotes emphasis, a cross reference, or an introduction to a key concept. This font also denotes text for which you supply the appropriate word or value.
<i>italic monospace</i>	Italic text in this font denotes that you must supply the appropriate words or values in the place of these items.
monospace	Text in this font denotes text or characters that are to be literally input from the keyboard, sections of code, programming examples, and syntax examples. This font is also used for the proper names of disk drives, paths, directories, programs, subprograms, subroutines, device names, functions, variables, filenames, and extensions.
VXIpc 700 Series	The terms <i>VXIpc 700 Series</i> and <i>VXIpc-700</i> refer to a series of C-size, single-slot, VXI controllers. Currently, this series consists of the VXIpc-740 and VXIpc-745.
VXIpc 800 Series	The terms <i>VXIpc 800 Series</i> and <i>VXIpc-800</i> refer to a series of C-size, dual-slot, VXI controllers. Currently, this series consists of the

VXIpc-850 and VXIpc-860, with various processors and in different speeds.

VXIpc 800/700 Series The term *VXIpc 800/700 Series* refers to all models of the VXIpc 800 and VXIpc 700 Series.

Abbreviations, acronyms, metric prefixes, mnemonics, symbols, and terms are listed in the *Glossary*.

How to Use This Documentation Set



Begin by reading this manual, *Getting Started with Your VXIpc 800/700 Series for Windows 95/NT*, for basic instructions on setting up the hardware and software. This is a brief quick-start manual that describes how to get started with your kit using the default hardware and software settings. Refer to the following manuals for more information about the hardware or software.

You received either the *VXIpc 800 Series User Manual* or the *VXIpc 700 Series User Manual* with your kit, depending on the hardware product you purchased. Your VXIpc user manual contains more details about changing the hardware installation or configuration from the defaults, and using the hardware.

When you are familiar with the material in the previous manuals, you can begin to use the *NI-VXI User Manual*. This manual presents the concepts of VXI and prepares you for detailed explanations of the NI-VXI functions. Study the descriptions of each function given in the online help utility to fully understand the purpose and syntax of each function. This manual is available in the `c:\NIVXI\manuals` directory under the name `NIVXIUM.pdf`. Use the Acrobat Reader program, Version 3 or later, to open this file. You can also access the NI-VXI online help for Windows 95/NT in the `NIVXI` folder.

Refer to the *NI-VISA User Manual* to learn about VISA and how to use it in your system. The NI-VISA online help describes the attributes, events, and operations you can use in NI-VISA. The user manual is available in the `c:\VXIpc\os\NIvisa\manuals` directory (where `os` is either `win95` or `winNT`) under the name `NIVISAUM.pdf`. Use the Acrobat Reader program, Version 3 or later, to open this file.

Related Documentation

The following documents contain information that you may find helpful as you read this manual:

- ANSI/IEEE Standard 1014-1987, *IEEE Standard for a Versatile Backplane Bus: VMEbus*
- ANSI/IEEE Standard 1155-1993, *IEEE VMEbus Extensions for Instrumentation: VXIbus*
- ANSI/VITA 1-1994, *VME64*
- VXI-6, *VXIbus Mainframe Extender Specification*, Rev. 1.0, VXIbus Consortium

Customer Communication

National Instruments wants to receive your comments on our products and manuals. We are interested in the applications you develop with our products, and we want to help if you have problems with them. To make it easy for you to contact us, this manual contains comment and configuration forms for you to complete. These forms are in Appendix D, *Customer Communication*, at the end of this manual.

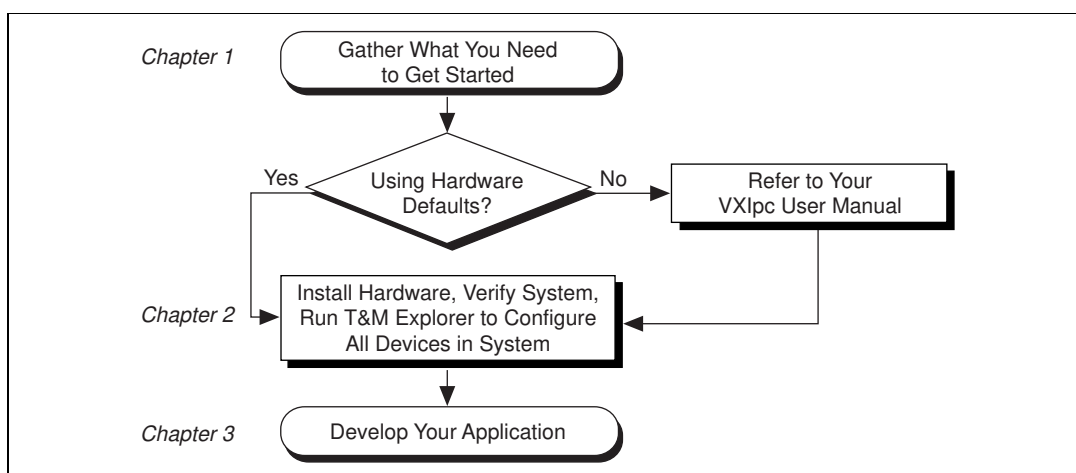
Introduction

Chapter 1

This chapter describes the VXIpc 800/700 Series of embedded VXI computers along with the NI-VXI/VISA software, lists what you need to get started, lists optional software, and gives an overview of the directory structure on your hard drive.

How to Use This Manual

The following flowchart shows where to turn in this manual for more details on configuring and using the hardware and software.



What You Need to Get Started

- VXIpc 800 Series or VXIpc 700 Series embedded controller (hereafter described together as the VXIpc 800/700 Series)
- VXIbus mainframe
- Keyboard (and included adapter cable)
- Mouse

- Monitor with VGA or better resolution
- National Instruments software media for the VXIpc 800/700 Series

The NI-VXI/VISA software is already installed on your VXIpc 800/700 computer. It is also included on disk in the event that you need to reinstall your software. For installation instructions, please refer to Appendix C, *Reinstalling the NI-VXI/VISA Software*.

Hardware Description

The VXIpc 800/700 Series are C-size embedded computers based on the Peripheral Component Interface (PCI) bus and Industry-Standard Architecture (ISA). These computers are high-performance, easy-to-use platforms for controlling VXIbus systems, featuring complete VXI functionality through interactive utilities and C function calls. These embedded computers can take advantage of the VXI high-performance backplane capabilities and give you direct control of VXI registers, memory, interrupts, and triggers.

All models in the VXIpc 800/700 Series are fully *VXIplug&play* compliant and can be used with PC-compatible software tools, the National Instruments LabVIEW and LabWindows®/CVI application software, and the NI-VXI, NI-VISA, and NI-488.2 bus interface software.

For in-depth details on the VXIpc 800/700 hardware (including a description of the differences between the various models in their respective series), consult the hardware manual that came with your kit, either the *VXIpc 800 Series User Manual* or the *VXIpc 700 Series User Manual*.

Software Description

The NI-VXI/VISA bus interface software for the VXIpc 800/700 Series is already installed on your hard drive. It includes a Resource Manager, an interactive configuration and troubleshooting program, libraries of software routines for test and measurement (T&M) programming, interactive control programs for both NI-VXI and NI-VISA, and a logging utility you can use for debugging your applications. You can

use this software to seamlessly program multiple-mainframe configurations and have software compatibility across a variety of controller platforms.

NI-VISA has a comprehensive library of software routines not only for VXI programming, but also for GPIB, GPIB-VXI, and Serial. You can use this software to program instruments connected via different types of interfaces.

The NI-488.2 software kit is also available, which gives you accessibility to the industry-standard NI-488.2 software for controlling external GPIB instruments through the GPIB port on the front panel (or through a PCMCIA-GPIB card on models that do not include GPIB as a standard feature). The GPIB interface on your VXIpc controller is fully compatible with the NI-488.2 driver for a variety of operating systems. Any software using NI-488.2 will run on the VXIpc 800/700.

T&M Explorer helps merge NI-VXI and NI-VISA closer together. You use T&M Explorer to view your entire T&M system and configure various components, whether they are VXI, GPIB, or Serial devices. This utility not only takes the place of the NI-VXI VXIedit/VXItdit and NI-VISA VISAconf configuration utilities, but it also adopts the functionality of the NI-DAQ Configuration utility so you can configure National Instruments VXI-DAQ cards. You can also easily add VME devices to your system with T&M Explorer and view them on a screen display along with the rest of your system.

T&M Explorer also features various options of how to run the Resource Manager (Resman). You can still execute Resman independently to configure your instruments after a power cycle. But you can also perform resource manager operations directly from T&M Explorer or configure it to run Resman automatically at startup.

The NI Spy utility tracks the calls your application makes to National Instruments T&M drivers, including NI-VXI, NI-VISA, and NI-488.2. NI Spy helps you debug your application by clearly highlighting the functions that return errors. You can let NI Spy keep a log of your program's calls to these drivers so that you can check them for errors at your convenience.

Software Configurations

There are three software configurations described in this manual:

- NI-VXI for Windows 95—This is a fully 32-bit native Plug and Play driver for Windows 95. You can run *only* 32-bit applications with this driver. Applications developed using this driver run with NI-VXI for Windows NT without the need to recompile.
- NI-VXI for Windows NT—This is a 32-bit driver designed for Windows NT. You can use this version to develop and run 32-bit applications for Windows 95/NT.
- NI-VISA for Windows 95/NT—This is a 32-bit driver designed for Windows 95/NT. Note that for VXI support, the NI-VXI driver must be installed. You can use this driver to develop and run 32-bit applications for Windows 95/NT.

National Instruments Application Software

Your VXIpc 800/700 kit comes with the NI-VXI/VISA bus interface software already installed for you. In addition, you can use the National Instruments LabVIEW and LabWindows/CVI application programs and instrument drivers to ease your programming tasks. These standardized programs match the modular virtual instrument capability of VXI and can reduce your VXI/VME software development time. These programs are fully VXI *plug&play* compliant and feature extensive libraries of VXI instrument drivers written to take full advantage of direct VXI control. LabVIEW and LabWindows/CVI include all the tools needed for instrument control, data acquisition, analysis, and presentation.

LabVIEW is a complete programming environment that departs from the sequential nature of traditional programming languages and features a graphical programming environment.

LabWindows/CVI is an interactive C development environment for building test and measurement and instrument control systems. It includes interactive code-generation tools and a graphical editor for building custom user interfaces.

When you boot your system for the first time, you can insert a configuration disk to access either or both of these application programming environments. Refer to the *Booting Your System for the First Time* section in Chapter 2, *Setup*, for more information. Both LabVIEW and LabWindows/CVI integrate the VXI and VISA libraries that are required to support your VXIpc 800/700. You also get hundreds

of complete instrument drivers, which are modular, source-code programs that handle the communication with your instrument to speed your application development.

Files and Directories Installed on Your Hard Drive

Your hard drive includes a directory called `images` in its root that contains software and soft copies of manuals for the operating system and for the peripherals. The directory structure under the `images` directory is logically organized into several levels.

In the `images` directory itself, you will find a `manuals` directory, an `os` directory, and directories for each of the peripherals of your computer.

The `manuals` directory contains quick reference guides, technical reference manuals, and National Instruments software manuals, all in Adobe Acrobat portable document format (PDF). Use the Acrobat Reader program, version 3 or later, to open and read these manual files on your computer, and to print them if desired. To access any of these manuals, change your directory to `c:\images\manuals` and list the contents of that directory.

The `os` directory contains a subdirectory corresponding to the operating system installed on your computer. That subdirectory contains an image of the CD from which your operating system was installed. As a result you do not have to insert the CD when you install a new peripheral. When you are asked to insert the CD, you can simply direct the system to look in the `images\os` directory instead.

For example, if your system has Windows 95 installed, you should find an image of the Windows 95 CD in `c:\images\os\win95`.

The rest of the directories correspond to each of the peripherals in your system. Within each of these directories are the drivers for the peripherals. These files and directories are copied exactly from the distribution disks of the manufacturers, so the naming conventions vary from peripheral to peripheral.

Because the naming conventions may not be completely straightforward, National Instruments provides a text file named `drivers.txt` in the `images` directory. The `drivers.txt` file explains how to install support for each peripheral. You may want to print this file for reference when you install your peripheral device drivers.

Setup

Chapter

2

This chapter contains basic instructions for setting up the VXIpc 800/700 and the NI-VXI/VISA software.

You can use this material as a guide to quickly configure and operate your VXI system using the VXIpc 800/700. This chapter assumes that you intend to perform a basic configuration as follows:

- You have one VXIbus chassis in which you will be using the VXIpc 800/700 as the Resource Manager (logical address 0).
- You will be using the NI-VXI/VISA software for initialization, configuration, and device interaction.
- You will use the default hardware and software settings.

Configuring the Hardware

The default hardware settings are acceptable for most typical applications. Refer to Appendix A, *Default Settings*, for a complete listing of the hardware and software default settings.

The *VXIpc 800 Series User Manual* and the *VXIpc 700 Series User Manual* fully describe the configuration and installation of each embedded computer in the VXIpc 800/700 Series. Refer to your VXIpc user manual if you want to try a different hardware configuration, or if you would like more information on a particular setting.

Use the T&M Explorer utility in NI-VXI/VISA to change any of the configuration settings for the VXIpc. For information on the software, including optional settings, use T&M Explorer and its online help. Use the Windows **Start** menu to open either the NI-VXI or NI-VISA program group and select **T&M Explorer**. To access the T&M Explorer online help, open the **Help** menu and select **Help Topics**.

Installing the Hardware



Caution: *To prevent electrostatic discharge, touch the antistatic plastic package to a metal part of your VXIbus chassis before removing the VXIpc 800/700 from the package.*



Warning: *To protect both yourself and the mainframe from electrical hazards, the mainframe should remain off until you are finished installing the VXIpc module.*

Plug in your chassis, but leave the power turned off. Install the VXIpc 800/700 in the first slot (Slot 0) of the VXI chassis. In its default configuration, the VXIpc 800/700 Series automatically detects whether it should be the VXIbus system controller. The VXIbus system controllers operate certain VXIbus lines as required for VXI systems. Verify that any other VXI devices with system controller capability that are located in the same chassis are not configured as system controller.



Caution: *Having more than one device configured as system controller will damage the VXI system.*

For VXI systems that include VME devices, ensure that the VME devices are not configured in the upper 16 KB (starting from 0xC000) of the A16 address space. This region is reserved for VXI device configuration registers, which are used for initializing, configuring, and interacting with VXI devices.

Also ensure that no VXI devices in your system are configured for logical address 0, which is the default configuration for the VXIpc 800/700.

Complete your installation as follows:

1. Attach cables for your keyboard, mouse, video, and any devices you want to connect to your system. Refer to your VXIpc user manual if you are not certain about any of these connections.
2. Turn on power to the VXI chassis.
3. Follow the prompts in the Setup program.

Installed Software

Your VXIpc 800/700 kit comes with the NI-VXI/VISA bus interface software already installed. However, if you receive a software update, or if you need to reinstall software in the event that your files were accidentally erased, refer to Appendix C, *Reinstalling the NI-VXI/VISA Software*. This appendix explains how to use the Setup program.

If you need to reinstall LabVIEW or LabWindows/CVI, use the CD or diskette package that came with these programs.

Booting Your System for the First Time

At Windows 95/NT startup, you are prompted to insert a disk to configure the system for LabVIEW or LabWindows/CVI. These programming environments are already installed on your system but you must insert a configuration disk when prompted so that you can access and use them. If you ordered either of these programming environments, select the appropriate checkbox and insert the configuration disk. Follow the instructions as prompted.

Do not select either checkbox if you did not order LabVIEW or LabWindows/CVI. Continue with the rest of the Setup program.



Caution: *Do not disregard the prompt to configure the system for LabVIEW or LabWindows/CVI. Setup assumes you do not need these programs and deletes them from your hard drive unless you insert the configuration disk during the initial setup. If you neglect to do this, you will need to install LabVIEW or LabWindows/CVI from the CD or diskette set.*

After the initial configuration is complete, run T&M Explorer. It will prompt you to run Resman, which is the National Instruments Resource Manager. You must run Resman every time the chassis power is cycled so that your application can access devices in the VXI/VME chassis. You can configure T&M Explorer to automatically run Resman on power-up. T&M Explorer contains right-click help that leads you through your configuration tasks.

Verifying Your System Configuration

After you finish configuring the system through T&M Explorer, verify the system configuration through one of the interactive control utilities. Use VIC under NI-VXI or VISAIC under NI-VISA.

For an example on how to use VIC, refer to the *Device Interaction* section in Chapter 3, *Developing Your Application*.

Developing Your Application

Chapter

3

This chapter discusses the software utilities you can use to start developing applications that use the NI-VXI/VISA driver.

After verifying your system configuration, you can begin to develop your VXI or VISA application software. Be sure to check the `README.txt` file for the latest application development notes and changes.

Your software includes several utilities to assist you in your system development. These include T&M Explorer, Resman, NI Spy, VISAIC, and VIC. You can also access several examples to learn how to use NI-VISA or NI-VXI for certain tasks. Each of these components assists you with one of four steps of development: configuration, device interaction, programming, and debugging.

You can access these utilities through the Windows **Start** menu. Open either the NI-VXI or NI-VISA program group and select the utility you want to use.

Configuration

The configuration utilities in your kit are T&M Explorer and Resman. Resman is the application that performs VXI Resource Manager functions as described in the VXIbus specification. Its most important functions include configuring all devices on the VXI backplane for operation and allocating memory for devices that request it.



Note: *Power cycling resets all devices, so you need to run Resman to reconfigure them every time chassis power is cycled.*

T&M Explorer presents a graphical display of your entire test and measurement system to help you configure various components. When you launch T&M Explorer, you see all your VXI, GPIB, GPIB-VXI, and serial devices on the screen. You can view the properties (such as logical address, address space used, primary address, and so on) of each device by right-clicking on the device in the tree. When you view the

properties of most National Instruments devices, you can configure the hardware settings directly in the property pages.

T&M Explorer and Resman are designed to work together. You can run the Resource Manager through T&M Explorer by either clicking on the **Run Resman** button on the toolbar, or selecting **VXI Resource Manager** from the **Tools** menu. From the **Options** dialog in the **Tools** menu, you can also configure T&M Explorer to run Resman automatically when the computer boots up. Resman reports all errors that it finds in your system to T&M Explorer. When you view your system through T&M Explorer, you can easily spot any errors in your system that Resman found.

You can find more information about T&M Explorer by using its online help. From T&M Explorer, open the **Help** menu and select **Help Topics**.

Device Interaction

After Resman has detected and configured all VXI devices, you can view specific information on each device in your system by using the T&M Explorer utility. This utility includes a **System View**, which contains a description for each device, including each VXI device's logical address.

You can interact with your VXI devices by using the VIC or VISAIC utility (VIC for NI-VXI or VISAIC for NI-VISA). You can use these utilities to interactively control your VXI devices without having to use a conventional programming language, LabVIEW, or LabWindows/CVI.



Note: *You can launch VIC or VISAIC from the Tools menu in T&M Explorer.*

Try the following in VIC:

In the **Command** entry field, type `help vxiiinreg`.

This help file shows you the syntax for this command, which reads VXI device configuration registers. The first argument is a logical address, and the second is the offset of the VXI device configuration register to be read.

Type:

```
vxiiinreg 0,0
```

The **History** window shows the result of the command execution, such as:

```
Return Status (0): SUCCESS.  
value = 0x9ff6
```

If the value ends with `ff6`, you have successfully read the National Instruments manufacturer ID from the VXIpc 800/700 ID register.

You may now want to read the configuration registers from other VXI devices in your system using the command `vxiiinreg`. This command accesses only the upper 16 KB of A16 space. Try reading a register from each of the devices listed in the **Connection View** of T&M Explorer. In this way, you can verify that your VXIpc 800/700 can access each of the devices in your VXI system successfully.

You can also access VXI and VME devices that are configured in A16, A24, and A32 address space by using the `vxiiin` or `vxiiout` commands. For more information regarding VIC operation and commands, refer to the VIC online help.

Alternatively, you can use VISAIC to interact with your devices. VISAIC lists the available devices, similar to what T&M Explorer displays. By double-clicking on a given device, you can open a VISA session and access the device through it. For more information regarding VISAIC, use the right-click help available from all panels.

Programming with VXI

National Instruments provides two different programming interfaces for accessing your instruments: NI-VISA and NI-VXI. NI-VISA is the National Instruments implementation of the VISA API as defined by the *VXIplug&play* standard. It is very useful in situations where you have different types of instruments in your system (such as VXI, GPIB, and serial devices) because the NI-VISA functions have the same interface.

NI-VXI is the National Instruments proprietary interface for programming VXI instruments. Both NI-VXI and NI-VISA grant you register-level access of VXI instruments as well as messaging capability to message-based devices. With either interface you can

service asynchronous events, such as triggers and signals, and also assert them.

The best way to learn how to program with NI-VXI or NI-VISA is by reviewing the example programs included in your software. In the examples directory you will find examples for many different types of applications. If you are just getting started, you should first learn how to access registers with high-level calls and send messages with word serial functions. The NI-VISA examples of these tasks are called `VISAhigh.c` and `VISAws.c`. The NI-VXI examples are called `VXIhigh.c` and `VXIws.c`. You should use the other examples as you try more advanced techniques. Consult the *NI-VISA User Manual* or the *NI-VXI User Manual* for additional information on these topics.



Note: *The NI-VXI User Manual can be found in the `NIVXI\manuals` directory, and the NI-VISA User Manual is in the `VXIpn\os\NIvisa\manuals` directory, where `os` would be either `Win95` or `WinNT`. Use the Acrobat Reader program to open and navigate through the manuals.*

Table 3-1 summarizes the topics addressed by the example programs.

Table 3-1. NI-VXI/VISA Examples

Coverage	NI-VISA Example	NI-VXI Example
Message-Based Access	<code>VISAws.c</code>	<code>VXIws.c</code>
High-Level Register Access	<code>VISAhigh.c</code>	<code>VXIhigh.c</code>
Low-Level Register Access	<code>VISAlow.c</code>	<code>VXIlow.c</code>
Sharing Memory	<code>VISAmem.c</code>	<code>VXImem.c</code>
Interrupt Handling	<code>VISAint.c</code>	<code>VXIint.c</code>
Trigger Handling	<code>VISAtrig.c</code>	<code>VXItrig.c</code>



Note: *T&M Explorer includes special settings that you must use for low-level functions and memory sharing. Consult the T&M Explorer online help for information on setting these up.*

VME Support

To access VME devices in your system, you must configure NI-VXI to see these devices, by using the **Add Device Wizard** in T&M Explorer. For each address space in which your device has memory, you must create a separate pseudo-device entry with a logical address between 256 and 511. For example, a VME device with memory in both A24 and A32 spaces would require two entries. You can also specify which interrupt levels the device uses. VXI and VME devices cannot share interrupt levels. You can then access the device from NI-VXI or NI-VISA just as you would a VXI device, by specifying the address space and the offset from the base at which you have configured it. NI-VISA support for VME devices includes the register access operations (both high-level and low-level) and the block move operations, as well as the ability to receive interrupts.

Compiler Symbols for NI-VXI

You may need to define some symbols so that the NI-VXI library can work properly with your program.



Note: *Skip this section if you are programming with NI-VISA only. NI-VISA neither requires nor uses these symbols.*

You can define the symbols using `#define` statements in the source code or you can use either the `/D` or the `-D` option in your compiler (both the Microsoft and Borland compilers support the `/D` and `-D` options). If you use `#define` statements, you must define the symbols before including the NI-VXI header file `ni_vxi.h`. If you use the makefiles to compile the sample program, the makefile already defines the necessary symbols.

The `VXINT` symbol is usually required. You must define it when using the Microsoft C or Borland C compiler. `VXINT` designates the application as a Windows 95/NT application.



Note: *LabWindows/CVI automatically defines the correct symbol. You do not need to define `VXINT` when using LabWindows/CVI.*

The `BINARY_COMPATIBLE` symbol is optional. It makes the application binary compatible with embedded VXI controllers, such as the National Instruments VXIpc series of embedded controllers. This option may

cause a slight performance degradation when using low-level VXIbus access functions.

If you define these symbols in your source code, your source code should look something like the following sample code:

```
#define VXINT
#define BINARY_COMPATIBLE
.
.
.
#include <nivxi.h>
```

If you define these symbols using the `/D` or `-D` compiler options, you should specify the following when invoking the compiler.

For the Microsoft C compiler:

```
/DVXINT /DBINARY_COMPATIBLE
```

For the Borland C compiler:

```
-DVXINT; BINARY_COMPATIBLE;
```

You will also need to link in the appropriate import library for your code. If you are using a Microsoft C compiler, use the `nivxint.lib` in the `nivxi\win32\msc\` directory. If you are using a Borland C compiler, use the `nivxint.lib` in the `nivxi\win32\borlandc\` directory.

Refer to the documentation that came with your compiler package for detailed instructions about using the compiler and the various tools (linker, debugger, and so on). Your compiler documentation is an important and useful source of information for writing, compiling, and debugging C programs.

Debugging

NI Spy, VISAIC, and VIC are useful utilities that can aid in identifying the causes of problems in your application.

NI Spy tracks the calls your application makes to National Instruments T&M drivers including NI-VXI, NI-VISA, and NI-488.2. NI-488.2 users may notice that NI Spy is very similar to GPIB Spy. It highlights

functions that return errors, so you can quickly spot which functions failed during your development. NI Spy can log the calls your program makes to these drivers so you can check them for errors at your convenience.

You can also control your instruments interactively using VISAIC and VIC. You can use VISAIC to control and communicate with your instruments with NI-VISA without having to write a program. VIC gives you a similar environment that uses NI-VXI. These utilities are an excellent platform for quickly testing instruments and learning how to communicate with them.

Refer to the online help for instructions on how to use VIC or VISAIC and to learn about their features. In VIC, click on the ? button (beside the **Go** button) to get help for that page, or you can type `help`. You can also right-click on a component on the screen to access `What's This` help. In VISAIC you can right-click to reach `What's This` help and function help.

Default Settings

This appendix summarizes the hardware and software default settings for the hardware and software in your kit. If you need more information about a particular setting, or if you want to try a different configuration, please refer to the appropriate VXIpc user manual for your hardware reference and the T&M Explorer online help for your software reference.

Because you can also use T&M Explorer to configure a VXI-MXI-2 or a VME-MXI-2, this appendix also summarizes the software default settings for the VXI/VME-MXI-2.

VXIpc 800/700

This section summarizes the hardware and software default settings for the VXIpc 800/700.

Table A-1. VXIpc 800 Series Hardware Default Settings

Hardware Component	Default Setting
S1—Ethernet EEPROM	Enabled. <i>Do not alter this setting.</i>
S2—Power On Self Configuration (POSC)	Enabled. <i>Do not alter this setting.</i>
S3—CLK10 Source	Source from onboard oscillator
S4—CLK10 SMB Polarity	Not inverted
S5—CLK10 SMB Direction	Receive CLK10
S6—CLK10 SMB Termination	Do not terminate
S7—TrigIn SMB Termination	Do not terminate
S8—GPIB Circuitry Interrupt	Level 11

Table A-1. VXIpc 800 Series Hardware Default Settings (Continued)

Hardware Component	Default Setting
S9—MITE Configuration EEPROM	Load values from user section
W1—SCSI Termination	Enabled
W2—CMOS Clear	CMOS not cleared
W4—Parallel Port DMA Channel	Channel 1
W13—Slot Detection	Automatically detect slot

Table A-2. VXIpc 700 Series Hardware Default Settings

Hardware Component	Default Setting
W1—Slot detection	Automatically detect slot
W3—CMOS Clear	CMOS not cleared
W6—Ethernet EEPROM	Enabled. <i>Do not alter this setting.</i>
W7—MITE Configuration EEPROM	Load values from user section
W10—Power On Self Configuration (POSC)	Enabled. <i>Do not alter this setting.</i>
W12—TrigIn SMB Termination	Do not terminate

Table A-3. VXIpc T&M Explorer Device Tab Default Settings

Editor Field	Default Setting
Logical address	0
Device class	Message based
Size of Servant area	0

Table A-3. VXIpc T&M Explorer Device Tab Default Settings (Continued)

Editor Field	Default Setting
Number of handlers	1
Number of interrupters	0

Table A-4. VXIpc T&M Explorer Shared Memory Tab Default Settings

Editor Field	Default Setting
Memory sharing	Don't share memory
Shared RAM size	0 KB
Reserved physical memory	0 KB
Lower half window byte swapping	Disabled
Upper half window byte swapping	Disabled
Map upper and lower halves at same PCI address	Disabled

Table A-5. VXIpc T&M Explorer PCI Tab Default Settings

Editor Field	Default Setting
Low-level register access API support	Enabled
User window size	64 KB

VXI/VME-MXI-2

This section summarizes the software default settings for the VXI-MXI-2 and VME-MXI-2.

Table A-6. VXI/VME-MXI-2 T&M Explorer Device Tab Default Settings

Editor Field	Default Setting
Logical address	Use DIP switch
Address space	A24 *
Requested memory	16 KB *
A24/A32 write posting	Disabled
A16 write posting	Disabled
Interlocked mode	Disabled
* Assumes no DRAM is installed. If DRAM is installed, the Address space should be A32, and Requested memory should match the amount of DRAM. If you install the DRAM yourself, you must manually specify these changes.	

Table A-7. VXI/VME-MXI-2 T&M Explorer VXI/VME Bus Tab Default Settings

Editor Field	Default Setting
Bus timeout value	125 μ s
Slot 0 configuration	Auto-detect
Auto retry	Disabled
Transfer limit	256
Arbiter type	Priority
Fair requester	Enabled
Arbiter timeout	Enabled
Request level	3

Table A-8. VXI/VME-MXI-2 T&M Explorer MXI-2 Bus Tab Default Settings

Editor Field	Default Setting
System controller	Auto-detect
Bus timeout value	1 ms
MXI-2 auto retry	Disabled
MXI transfer limit	Unlimited
MXI fair requester	Disabled
Perform parity checking	Enabled
MXI-2 CLK10 signal direction	Switch determines signal direction (VXI-MXI-2 only)

Common Questions

A graphic consisting of a large, bold, black letter 'B' centered within a white square. The square is framed by a thick black border. Above the 'B', the word 'Appendix' is written in a smaller, italicized, black serif font.

This appendix addresses common questions you may have about using the NI-VXI/VISA software on the VXIpc platform.

What are some of the differences between the old utilities and the new ones?

The old utility components are as follows:

- **VXIinit**—This utility initializes your National Instruments controller hardware with settings determined in **VXIedit**.
- **Resman**—This utility initializes and configures all the other devices in your VXI system.
- **VXIedit**—This utility configures your National Instruments hardware.
- **VXIedit**—This is a console-based version of **VXIedit**.
- **VIC**—Use this utility to interactively communicate with VXI devices over the VXIbus using the NI-VXI API.
- **VICtext**—This is a console-based version of **VIC**.
- **VISAconf**—This utility configures settings used by NI-VISA.
- **VISAIC**—Use this utility to interactively communicate with VISA devices (GPIB, VXI, Serial) using NI-VISA.

VXI system integration with the old utilities typically proceeded as follows:

1. Install components and boot the system.
2. Configure your hardware with **VXIedit**.
3. Reboot and run **VXIinit** to initialize your National Instruments Hardware.
4. Run **Resman** to initialize the VXIbus.
5. Optionally run **VXIedit** to configure any extender devices on the VXIbus.
6. Run **VIC** to verify device operation.

7. If you are using VISA, you have the option of running VISAconf to configure NI-VISA.
8. Run VISAIC to verify that you can communicate with your system using VISA.

The new utility components are as follows:

- T&M Explorer—Use this utility to configure, view, and initialize your system.
- Resman—You can still use this as before. However, you can perform resource manager operations directly from T&M Explorer or configure it to run Resman automatically at startup. *See What about running Resman?* later in this section.
- VIC—Use as before.
- VISAIC—Use as before.
- NI Spy—Use this utility to debug your NI-VXI or NI-VISA application.

Your setup might now include the following steps:

1. Install components and boot the system.
2. Execute VXI Resource Manager responsibilities (either run Resman or click the **build** button in T&M Explorer.)
3. Run VIC or VISAIC to verify communication in your system.

What happened to VXIinit?

You no longer need to run VXIinit to initialize settings on your hardware. We now take care of loading hardware settings in the driver, completely eliminating the need for VXIinit.

Where do I find the information that VXIinit used to print?

You can view information about your controller from the properties pages and the hardware configuration pages. For example, you can view logical address and user window size in the device-specific property pages in T&M Explorer.

What happened to VXIedit and VISAconf?

The functionality of these two configuration utilities has been integrated into a powerful new utility called T&M Explorer. This utility starts with a graphical view of the VISA devices (GPIB, VXI, GPIB-VXI, and serial) that it finds in your system. Right-click on an

individual device in the tree structure to see its properties. You can further configure National Instruments devices by selecting the **Hardware Configuration** option. This includes National Instruments VXI-DAQ cards, which means you can configure these devices from T&M Explorer without having to run the DAQ Configuration Utility.

What about running Resman?

Resman is the name of the utility that performs the duties of a VXI Resource Manager as discussed in the VXIbus specification. When you set a National Instruments controller to Logical Address 0, you will at some point need to run Resman to configure your VXI instruments. If your controller uses a different (non-zero) logical address and is a message-based device, you need to start Resman before running it on the Logical Address 0 computer.

So when do you need to run Resman?

Run Resman whenever you need to configure your VXI instruments. For example, if you power-cycle your VXI chassis, your instruments will be reset, and you will need to run Resman to configure them. You can get into trouble if you run Resman when your devices are not in a reset state. Therefore, if you have to run Resman after running it once, you should reset all of your VXI instruments.

In our new architecture, you can perform resource manager operations from within T&M Explorer. Additionally, you can tell T&M Explorer to run Resman when the computer first boots up. In this case you may never need to run Resman explicitly again. This is common when you use an embedded PC such as the VXIpc-860. You can configure the computer to run Resman at startup, so when you power the chassis, Resman runs. If you power-cycle the chassis, the PC reboots, forcing Resman to run again.

What if I have a system that requires the old utilities?

The new installer for NI-VXI/VISA gives you the option of installing the old utilities. Thus, if you have a documented procedure for configuring your system that relies on the old configuration utilities, you can install them on your system. Use the **Custom** installer option to explicitly add the old utilities.

Why do you install some of the old utilities?

The VIC and VISAIC utilities still have a lot of functionality that our new utilities do not include. Therefore, it makes sense to distribute these two utilities as part of a normal installation.

How do I handle VME devices?

Although there is no way to automatically detect VME devices in a system, you can add them easily through the **Add Device Wizard** in T&M Explorer. Through this procedure, you can reserve resources for each of your VME devices and configure T&M Explorer to show VME devices on the screen with all your other devices.

How can I determine which version of the NI-VXI/VISA software I have installed?

Following are several ways to find this information:

- From T&M Explorer, select **About...** from the **Help** menu. In the **About** dialog box, press the **Software Info** button. This displays version information on NI-VXI and NI-VISA files.
- Under Windows 95 and Windows NT 4.0, you can find version information by right-clicking on any component and selecting the **Properties** option. This displays a property sheet with a version tab. This tab has version information about the product (NI-VXI) and the component (NIVXINT.DLL, for example).
- You can find version information about the NI-VXI driver by running the VIC utility program. Type `ver` at the prompt, and the utility displays the versions of VIC and NI-VXI, and the latest VXIpc hardware revision that this NI-VXI driver supports.
- You can find version information about the VISA driver through VISAIC by selecting **About...** from the **Help** menu.

How can I determine the serial number and hardware revision of the VXIpc embedded computers?

Run T&M Explorer and right-click on the name of the VXIpc. Select **Hardware Configuration**, and the dialog box for the device is displayed. The title bar includes the serial number and hardware revision.

Which NI-VXI utility program must I use to configure the VXIpc 800/700?

Use the T&M Explorer program to configure the VXIpc. T&M Explorer is located in the NIVXI program group folder.

Which NI-VXI utility program must I use to initialize the VXIpc 800/700?

In Windows 95/NT, the VXIpc embedded computer is automatically initialized at system startup.

Which NI-VXI utility program must I use to perform startup Resource Manager operations?

Use the Resman program to perform startup Resource Manager operations. It is located in the NIVXI directory. Resman uses the settings configured in T&M Explorer. It initializes your VXI/VMEbus system and stores the information that it collects to the RESMAN.TBL file in the TBL subdirectory of the NIVXI directory.

You can also run Resource Manager operations from T&M Explorer. Through T&M Explorer, you can also configure Resman to run automatically at computer startup.

What can I do to make sure that my system is up and running?

The fastest method for testing the system is to run Resman. This program attempts to access memory in the upper A16 address space of each device in the system. If Resman does not report any problems, the VXI communication system is operational.

To test individual devices, you can use the VIC or VISAIC program to interactively issue NI-VXI functions or NI-VISA operations, respectively. You can use the `VXIin()` and `VXIout()` functions or the `VXIinReg()` and `VXIoutReg()` functions to test register-based devices by programming their registers. If you have any message-based devices, you can send and receive messages with the `WSwrt()` and `WSrd()` functions. Notice that `VXIinReg()` and `VXIoutReg()` are for VXI devices only, but you can use `VXIin()` and `VXIout()` for both VXI and VME.

Finally, if you are using LabVIEW or LabWindows/CVI and you have instrument drivers for the devices in your chassis, you can use the interactive features of these programs to quickly test the functionality of the devices.

What do the LEDs on the front of the VXIpc 800/700 mean?

Refer to Appendix C, *Reinstalling the NI-VXI/VISA Software*, in your VXIpc user manual for a description of the front panel LEDs.

Is something wrong if the red SYSFAIL and FAILED LEDs stay lit after booting the VXIpc 800/700?

If either the **SYSFAIL** or **FAILED** LED remains lit, refer to Appendix C, *Reinstalling the NI-VXI/VISA Software*, in your VXIpc user manual for troubleshooting steps.

Can I access 32-bit registers in my VXIbus system from the VXIpc 800/700?

Yes. The VXIpc uses the 32-bit PCI bus to interface to the VXIbus. In fact, its VXIbus circuitry also supports the new VME64 standard for D64 accesses.

What kind of signal is CLK10 and what kind of signal do I need for an external CLK10?

CLK10 is a differential ECL signal on the backplane. However, the oscillator for the VXIpc 800/700 and the EXTCLK input on the VXIpc-800 front panel use TTL levels; therefore, you need to supply a TTL-level signal for EXTCLK. Our voltage converters convert the signal to differential ECL. You cannot drive CLK10 externally on the VXIpc 700 Series.

What is the accuracy of the CLK10 signal?

The CLK10 signal generated by the VXIpc 800/700 is ± 100 ppm (0.01%) as per the VXIbus specification. If you need a more accurate CLK10 signal on the VXIpc 800 Series, you can use the EXTCLK connector on its front panel.

If I boot the computer without video, and then plug in the video, why is it in black and white?

When the computer first boots, the video chips try to synchronize with the monitor. If the monitor is not there, the video chips cannot synchronize and establish color. You need to have the monitor attached at boot time to get color.

I've installed the SCSI software. Why doesn't the VXIpc 800 Series recognize my SCSI device?

- ◆ **VXIpc 800 Series users only**—This problem usually occurs when SCSI has been disabled in the BIOS. Enter your BIOS by pressing at boot time. In the **Setup** window, click on the **Chipset** icon. Select the **On Board PCI SCSI** option and enable it.

What type of video interface is onboard the VXIpc 800/700? What video drivers are included? If my application requires a special type of video display, how do I configure my VXIpc 800/700?

The VXIpc uses the Trident Microsystems TGUI96xx chip family, a combination graphics accelerator and RAMDAC. The TGUI9660 is the first chip used from this family. Subsequent pin-compatible chips will follow. The chips in this family are compatible with the Standard VGA video output MS Windows video driver, as well as the Trident Microsystems video driver. For more information on the video driver, refer to the `c:\images\manuals` directory.

- ◆ **VXIpc 800 Series users only**—If your application requires a special type of video display, you can remove the PCI video card included with your VXIpc 800 Series. Contact National Instruments for information on how to do this.

What kind of monitor can I use with the VXIpc 800/700? Can I use Super VGA?

VXIpc 800/700 computers that use Super VGA video output work only with monitors having a horizontal scan rate of at least 50 kHz and a vertical scan rate of 60 Hz.



Caution: *Make sure your monitor meets this specification. Enabling the Super VGA option on a monitor that does not meet this specification will cause damage to your monitor.*

What should I do if my keyboard connector does not fit into the keyboard port on the VXIpc 800/700?

You can plug keyboards that have a 6-pin Mini DIN PS/2 type connector directly into the VXIpc. You can use the keyboard adapter cable that is included with every VXIpc 800 kit to adapt the larger AT keyboard connector to the 6-pin Mini DIN connector.

How do I connect an external speaker to get audio capability?

- ◆ **VXIpc 800 Series users only**—A twisted-pair cable connects the front panel audio connector to the VXIpc 800 Series motherboard. Connect the external speaker to this front-panel connector. The center pin of the connector provides the audio signal. The shield of the connector is GROUND.

How do I add RAM to the VXIpc 800/700?

For information about adding RAM to the VXIpc 800/700, refer to Appendix A, *Specifications*, in your VXIpc user manual.

Which interrupt levels are free to be used by ISA bus boards? Which area of upper memory (adapter space) is free for use by ISA bus boards?

Refer to the appendix on VXIpc 800/700 system resources in your VXIpc user manual for information on the available port I/O register space, upper memory area, interrupts, and DMA channels.

How do I install the VXIpc 800/700 in a slot other than Slot 0?

The VXIpc 800 automatically detects whether it is in Slot 0 of a VXIbus mainframe. You do not need to change jumper settings to install the VXIpc 800 in a slot other than Slot 0 unless you have defeated the first slot detector (FSD) circuitry by changing the appropriate jumper setting on the VXIpc.

Refer to the configuration and installation chapter in your VXIpc user manual for information on enabling and defeating the FSD circuitry.

How do I check the configuration of the memory, floppy drive, hard drive, time/date, and so on?

You can view these parameters in the BIOS setup. To enter the BIOS setup, reboot the VXIpc 800 and press the key during the memory tests. Refer to Chapter 4, *BIOS*, in your VXIpc user manual for more information.

Can I upgrade my VXIpc 800?

- ◆ **VXIpc 800 Series users only**—You can upgrade the modular CPU card to upgrade the processor. Contact National Instruments for information.

How can I boot from an external SCSI hard drive?

- ◆ **VXIpc 800 Series users only**—In the **Setup/Standard** window, change the Master drive setting from **User** to **SCSI**, and make sure that SCSI is enabled in the **Setup/Chipset** window.

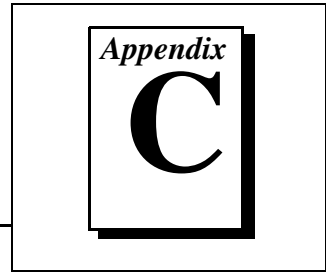
Can I use the internal IDE drive and an external SCSI hard drive at the same time?

- ◆ **VXIpc 800 Series users only**—Yes, but you can only boot from the internal IDE drive in this configuration.

My CMOS is corrupted. How do I set it back to default?

1. Select **Default/Optimal**.
2. Save and exit.

Reinstalling the NI-VXI/VISA Software



This appendix contains the instructions on how to reinstall your NI-VXI/VISA software. Your VXIpc 800/700 was shipped with the NI-VXI/VISA software already installed. You do not need to use these instructions unless a problem with your hard drive makes your software inaccessible.

Preparing for Installation

Use the Setup program that came with your NI-VXI/VISA software to install the entire software package or a software update, or to reinstall software in the event that your files were accidentally erased. The Setup program works in the same manner for either Windows 95 or Windows NT. You can install NI-VXI with or without NI-VISA.



Note:

Some of the utilities rely on the LabWindows/CVI Run-Time Engine. This software is installed, if necessary, during the NI-VXI/VISA installation.

Depending on the type of installation you choose, you may need up to 20 MB of free space available to accommodate the NI-VXI/VISA software. If you choose the **Custom** installation method, Setup displays the amount of memory required for the options you select.

To be compliant with VXI*plug&play* specifications, a VXI controller must provide the VISA I/O driver library standardized by VXI*plug&play*. VISA ensures that your controller can run all VXI*plug&play*-compatible software now and in the future.

The NI-VISA software in this kit is compatible with the WIN95/GWIN95 and WINNT/GWINNT frameworks. With NI-VISA installed on your computer, you can run any VXI*plug&play* software that is compatible with these frameworks. This includes instrument drivers and executable soft front panel software that are included with VXI*plug&play*-compatible instruments from a variety of vendors.

Removing a Previous Version

If you are currently using either the NI-VXI software for DOS/Windows 3.x or the NI-VXI Windows 95 Upgrade, you must remove it before installing the new software. You cannot have both the 16-bit and the 32-bit versions of NI-VXI installed at the same time.



Note: *If you plan to run both 16-bit and 32-bit applications, you should use the NI-VXI Windows 95 Upgrade version instead.*

If you have been using your VXIpc 800/700 under Windows 95 with either the NI-VXI software for DOS/Windows 3.x or the NI-VXI Windows 95 upgrade, you need to remove the Plug and Play information from the Windows 95 Device Manager before installing the new NI-VXI software.

Follow these steps to remove the VXIpc 800/700 information:

1. Double-click on the **System** icon under **Start»Settings»Control Panel**.
2. Select the **Device Manager** tab from the **System Properties** dialog that appears.
3. Click on the **View devices by type** button and double-click on the **Other Devices** icon.
4. Select the VXIpc 800/700 from the list of devices under **Other Devices**. It will appear under the name **PCI Card** or **PCI Bridge** and will have a circled exclamation point through the ? (question mark) icon.
5. Click on the **Remove** button.
6. Click **OK** to exit the Device Manager after removing the device information.

Installing the Software

This section describes how to install the 32-bit NI-VXI/VISA software for the VXIpc 800/700. The Setup program works the same whether you are using Windows 95 or Windows NT. Please carefully read these directions along with any messages on the screen before making your selections.

You can quit the Setup program at any time by pressing the **Cancel** button.

Setup is an interactive, self-guiding program that installs the NI-VXI/VISA software and configures your system to use the software with the VXIpc 800/700. Follow these steps to perform the installation:

1. Insert disk 1 of your set of disks labeled *NI-VXI/VISA for Windows 95/NT and VXIpc 800/700*.
2. Select **Run...** from the **Start** menu and enter the following text, where *x* is your floppy drive (usually A)
`X:\setup.exe`
 and press <Enter>.
3. Click on the **Next** button at the **Welcome** screen to start the installation and accept the license agreement.



Note: *If Setup detects a 16-bit (DOS or Windows 3.x) version of the NI-VXI software, it prompts you to remove it. Setup will quit so you can uninstall the old software. If you have a previous 32-bit (Windows 95 or Windows NT) version of the NI-VXI software installed, Setup installs the new version over the previous version.*



Caution: *If you want to keep the manufacturer/model name tables or the VME device configuration from a previous installation, be sure to back them up before starting Setup.*

4. Select the type of installation from the **Choose Setup** screen:
 - **Express** setup is the fastest and simplest installation option. This option installs all the NI-VXI/VISA software in default directories without prompting you to make any further choices.
 - **Typical** setup prompts you to make high-level choices of which drivers to install and the destination directories.
 - **Custom** setup gives you complete control over which files and utilities you want installed on your system. This option is recommended for advanced users.
5. The **Express** setup completes without further questions. Follow the prompts if you select either the **Typical** or the **Custom** setup options. The final prompt displays the choices you made concerning applications, support, and destination directories. Click on the **Next** button to begin the installation.
6. Setup now copies the necessary files to your hard drive and creates program icons.

Completing the Software Installation

After Setup completes, please review the information in any README files that Setup prompts you to read. Complete your software installation as follows:

1. When the installation process completes, you must reboot your computer for the changes to take effect. The NI-VXI driver is loaded at this time.
2. If you backed up the manufacturer and model name files, restore them to the TBL subdirectory of your NI-VXI directory before running T&M Explorer.
3. After you install the NI-VXI/VISA software, run the T&M Explorer program. It will prompt you to run Resman, the National Instruments Resource Manager. You must run Resman every time the chassis power is cycled so that your application can access devices in the VXI mainframe. You can also configure T&M Explorer to run Resman automatically at every computer startup.
4. After you run Resman, you are ready to use T&M Explorer to interactively configure the National Instruments hardware in your system. Use the right-click help for information about the various configuration options.

Customer Communication

Appendix

D

For your convenience, this appendix contains forms to help you gather the information necessary to help us solve your technical problems and a form you can use to comment on the product documentation. When you contact us, we need the information on the Technical Support Form and the configuration form, if your manual contains one, about your system configuration to answer your questions as quickly as possible.

National Instruments has technical assistance through electronic, fax, and telephone systems to quickly provide the information you need. Our electronic services include a bulletin board service, an FTP site, a fax-on-demand system, and e-mail support. If you have a hardware or software problem, first try the electronic support systems. If the information available on these systems does not answer your questions, we offer fax and telephone support through our technical support centers, which are staffed by applications engineers.

Electronic Services



Bulletin Board Support

National Instruments has BBS and FTP sites dedicated for 24-hour support with a collection of files and documents to answer most common customer questions. From these sites, you can also download the latest instrument drivers, updates, and example programs. For recorded instructions on how to use the bulletin board and FTP services and for BBS automated information, call (512) 795-6990. You can access these services at:

United States: (512) 794-5422

Up to 14,400 baud, 8 data bits, 1 stop bit, no parity

United Kingdom: 01635 551422

Up to 9,600 baud, 8 data bits, 1 stop bit, no parity

France: 01 48 65 15 59

Up to 9,600 baud, 8 data bits, 1 stop bit, no parity



FTP Support

To access our FTP site, log on to our Internet host, `ftp.natinst.com`, as anonymous and use your Internet address, such as `joesmith@anywhere.com`, as your password. The support files and documents are located in the `/support` directories.



Fax-on-Demand Support

Fax-on-Demand is a 24-hour information retrieval system containing a library of documents on a wide range of technical information. You can access Fax-on-Demand from a touch-tone telephone at (512) 418-1111.



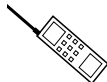
E-Mail Support (currently U.S. only)

You can submit technical support questions to the applications engineering team through e-mail at the Internet address listed below. Remember to include your name, address, and phone number so we can contact you with solutions and suggestions.

support@natinst.com

Telephone and Fax Support

National Instruments has branch offices all over the world. Use the list below to find the technical support number for your country. If there is no National Instruments office in your country, contact the source from which you purchased your software to obtain support.



Telephone



Fax

Australia	03 9879 5166	03 9879 6277
Austria	0662 45 79 90 0	0662 45 79 90 19
Belgium	02 757 00 20	02 757 03 11
Canada (Ontario)	905 785 0085	905 785 0086
Canada (Quebec)	514 694 8521	514 694 4399
Denmark	45 76 26 00	45 76 26 02
Finland	09 725 725 11	09 725 725 55
France	01 48 14 24 24	01 48 14 24 14
Germany	089 741 31 30	089 714 60 35
Hong Kong	2645 3186	2686 8505
Israel	03 5734815	03 5734816
Italy	02 413091	02 41309215
Japan	03 5472 2970	03 5472 2977
Korea	02 596 7456	02 596 7455
Mexico	5 520 2635	5 520 3282
Netherlands	0348 433466	0348 430673
Norway	32 84 84 00	32 84 86 00
Singapore	2265886	2265887
Spain	91 640 0085	91 640 0533
Sweden	08 730 49 70	08 730 43 70
Switzerland	056 200 51 51	056 200 51 55
Taiwan	02 377 1200	02 737 4644
United Kingdom	01635 523545	01635 523154
United States	512 795 8248	512 794 5678

Technical Support Form

Photocopy this form and update it each time you make changes to your software or hardware, and use the completed copy of this form as a reference for your current configuration. Completing this form accurately before contacting National Instruments for technical support helps our applications engineers answer your questions more efficiently.

If you are using any National Instruments hardware or software products related to this problem, include the configuration forms from their user manuals. Include additional pages if necessary.

Name _____

Company _____

Address _____

Fax (____) _____ Phone (____) _____

Computer brand _____ Model _____ Processor _____

Operating system (include version number) _____

Clock speed _____MHz RAM _____MB Display adapter _____

Mouse ___yes ___no Other adapters installed _____

Hard disk capacity _____MB Brand _____

Instruments used _____

National Instruments hardware product model _____ Revision _____

Configuration _____

National Instruments software product _____ Version _____

Configuration _____

The problem is: _____

List any error messages: _____

The following steps reproduce the problem: _____

Hardware and Software Configuration Form

Record the settings and revisions of your hardware and software on the line to the right of each item. Complete a new copy of this form each time you revise your software or hardware configuration, and use this form as a reference for your current configuration. Completing this form accurately before contacting National Instruments for technical support helps our applications engineers answer your questions more efficiently.

National Instruments Products

NI-VXI/VISA Software Version Number _____

Using Both NI-VXI and NI-VISA? _____

Using VXIpc 800 Series or VXIpc 700 Series? _____

Using LabVIEW or LabWindows/CVI? _____

VXIpc 800 Series Hardware Settings

VXIpc 800 Series Model Number _____

Part Number _____

Serial Number _____

Hard Drive Size _____ Video Memory _____

Processor Speed _____

DRAM SIMMs Installed _____

Slot Location _____

W1 Setting: SCSI Termination _____

W2 Setting: CMOS Clear _____

W4 Setting: Parallel Port DMA Channel _____

W13 Setting: Slot 0 Detection _____

S1 Setting: Ethernet EEPROM _____

S2 Setting: MITE Self-Configuration _____

S3 Setting: CLK10 Source _____

S4 Setting: CLK10 SMB Polarity _____

S5 Setting: CLK10 SMB Direction _____

S6 Setting: CLK10 SMB Termination _____

S7 Setting: External Trigger SMB Termination _____

S8 Setting: GPIB Circuitry Interrupt _____

S9 Setting: MITE Configuration EEPROM _____

VXlpc 700 Series Hardware Settings

VXlpc 700 Series Model Number _____

Part Number _____

Serial Number _____

Hard Drive Size _____ Video Memory _____

Processor Speed _____

DRAM SIMMs Installed _____

Slot Location _____

W1 Setting: Slot 0 Detection _____

W3 Setting: CMOS Clear _____

W6 Setting: Ethernet EEPROM _____

W7 Setting: MITE Configuration EEPROM _____

W10 Setting: MITE Self-Configuration _____

W12 Setting: External Trigger SMB Termination _____

VXlpc Configuration Editor Settings (T&M Explorer)

Logical Address _____

Device Class _____

Size of Servant Area _____

Number of Handlers _____

Number of Interrupters _____

Memory Sharing _____

Shared RAM Size _____

Reserved Physical Memory _____

Lower Half Window Byte Swapping _____

Upper Half Window Byte Swapping _____

Low-level Register Access API Support _____

User Window Size _____

VXI/VME-MXI-2 Configuration Editor Settings (T&M Explorer)

Logical Address _____

Address Space _____

Requested Memory _____

A24/A32 Write Posting _____
A16 Write Posting _____
Interlocked or Normal Mode _____
VXI/VME Bus Timeout Value _____
Slot 0 Configuration _____
Auto Retry for Cycles from VXI/VMEbus to MXIbus _____
Transfer Limit on VXI/VMEbus _____
VXI/VME Arbiter Type _____
VXI/VME Fair Requester _____
VXI/VME Arbiter Timeout _____
VXI/VME Request Level _____
MXI System Controller _____
MXI Bus Timeout Value _____
Auto Retry for Cycles from MXIbus to VXI/VMEbus _____
Transfer Limit on MXIbus _____
MXI Fair Requester _____
Parity Checking _____
MXI-2 CLK10 Direction (VXI-MXI-2 only) _____

Other Products

Computer make and model _____
Microprocessor _____
Clock frequency or speed _____
Type of video board installed _____
Operating system version _____
Operating system mode _____
Programming language _____
Programming language version _____
Other boards in system _____
Monitor (manufacturer, model) _____
Mouse (manufacturer, model) _____
Keyboard (manufacturer, model) _____
Other peripherals (manufacturer, model) _____

Documentation Comment Form

National Instruments encourages you to comment on the documentation supplied with our products. This information helps us provide quality products to meet your needs.

Title: *Getting Started with Your VXIpc™ 800/700 Series for Windows 95/NT*

Edition Date: September 1997

Part Number: 321743A-01

Please comment on the completeness, clarity, and organization of the manual.

If you find errors in the manual, please record the page numbers and describe the errors.

Thank you for your help.

Name _____

Title _____

Company _____

Address _____

Phone (____) _____ Fax (____) _____

Mail to: Technical Publications
National Instruments Corporation
6504 Bridge Point Parkway
Austin, TX 78730-5039

Fax to: Technical Publications
National Instruments Corporation
(512) 794-5678

Prefix	Meaning	Value
n-	nano-	10^{-9}
μ -	micro-	10^{-6}
m-	milli-	10^{-3}
K-	kilo-	10^3
M-	mega-	10^6
G-	giga-	10^9

A

- A16 space** VXIbus address space equivalent to the VME 64 KB short address space. In VXI, the upper 16 KB of A16 space is allocated for use by VXI devices configuration registers. This 16 KB region is referred to as VXI configuration space.
- A24 space** VXIbus address space equivalent to the VME 16 MB *standard* address space
- A32 space** VXIbus address space equivalent to the VME 4 GB *extended* address space
- address** Character code that identifies a specific location (or series of locations) in memory. In VISA, it identifies a resource.
- address space** A set of 2^n memory locations differentiated from other such sets in VXI/VMEbus systems by six addressing lines known as address modifiers. n is the number of address lines required to uniquely specify a byte location in a given space. Valid numbers for n are 16, 24, and 32. In VME/VXI, because there are six address modifiers, there are 64 possible address spaces.

address window	A portion of address space that can be accessed from the application program
ANSI	American National Standards Institute
API	Application Programming Interface; the direct interface that an end user sees when creating an application
ASIC	application-specific integrated circuit
B	
B	bytes
backplane	An assembly, typically a printed circuit board, with 96-pin connectors and signal paths that bus the connector pins. A C-size VXIbus system will have two sets of bused connectors called J1 and J2. A D-size VXIbus system will have three sets of bused connectors called J1, J2, and J3.
BERR*	Bus error signal
BIOS	Basic Input/Output System. BIOS functions are the fundamental level of any PC or compatible computer. BIOS functions embody the basic operations needed for successful use of the computer's hardware resources.
BTO	<i>See</i> Bus Timeout Unit.
bus error	An error that signals failed access to an address. Bus errors occur with low-level accesses to memory and usually involve hardware with bus mapping capabilities. For example, nonexistent memory, a nonexistent register, or an incorrect device access can cause a bus error.
Bus Timeout Unit	A functional module that times the duration of each data transfer and terminates the cycle if the duration is excessive. Without the termination capability of this module, a bus master attempt to access a nonexistent slave could result in an indefinitely long wait for a slave response.
byte order	How bytes are arranged within a word or how words are arranged within a longword. Motorola ordering stores the most significant (MSB) byte or word first, followed by the least significant byte (LSB) or word. Intel ordering stores the LSB or word first, followed by the MSB or word.

C

CLK10	A 10 MHz, ± 100 ppm, individually buffered (to each module slot), differential ECL system clock that is sourced from Slot 0 of a VXIbus mainframe and distributed to Slots 1 through 12 on P2. It is distributed to each slot as a single-source, single-destination signal with a matched delay of under 8 ns.
CMOS	Complementary Metal Oxide Semiconductor; a process used in making chips
Commander	A message-based device that is also a bus master and can control one or more Servants
configuration registers	A set of registers through which the system can identify a module device type, model, manufacturer, address space, and memory requirements. In order to support automatic system and memory configuration, the VXIbus specification requires that all VXIbus devices have a set of such registers.

D

Data Transfer Bus	DTB; one of four buses on the VMEbus backplane. The DTB is used by a bus master to transfer binary data between itself and a slave device.
DMA	Direct Memory Access; a method by which data is transferred between devices and internal memory without intervention of the central processing unit
DRAM	Dynamic RAM (Random Access Memory); storage that the computer must refresh at frequent intervals
driver window	A region of address space that is decoded by the VXIpc 800/700 for use by the NI-VXI software
DTB	<i>See</i> Data Transfer Bus.

E

ECL	Emitter-Coupled Logic
EEPROM	Electrically Erasable Programmable Read Only Memory

embedded controller An intelligent CPU (controller) interface plugged directly into the VXI backplane, giving it direct access to the VXIbus. It must have all of its required VXI interface capabilities built in.

F

fair requester A VXIbus device that will not arbitrate for the VXIbus after releasing it until it detects the bus request signal inactive. This ensures that all requesting devices will be granted use of the bus.

G

GPIB General Purpose Interface Bus (IEEE 488)

H

hex hexadecimal; the numbering system with base 16, using the digits 0 to 9 and letters A to F

Hz hertz; cycles per second

I

IEEE Institute of Electrical and Electronics Engineers

I/O input/output; the techniques, media, and devices used to achieve communication between machines and users

instrument driver A set of routines designed to control a specific instrument or family of instruments, and any necessary related files for LabWindows/CVI or LabVIEW

interrupt A means for a device to request service from another device

interrupt handler A VMEbus functional module that detects interrupt requests generated by interrupters and responds to those requests by requesting status and identify information

interrupt level The relative priority at which a device can interrupt

IRQ* Interrupt signal

K

KB kilobytes of memory

L

LED light-emitting diode

logical address An 8-bit number that uniquely identifies each VXIbus device in a system. It defines the A16 register address of a device, and indicates Commander and Servant relationships.

M

master A functional part of a VME/VXIbus device that initiates data transfers on the backplane. A transfer can be either a read or a write.

MB megabytes of memory

MBD Message-Based Device

message-based device An intelligent device that implements the defined VXIbus registers and communication protocols. These devices are able to use Word Serial Protocol to communicate with one another through communication registers.

MITE A National Instruments custom ASIC, a sophisticated dual-channel DMA controller that incorporates the Synchronous MXI and VME64 protocols to achieve high-performance block transfer rates

N

NI-488 or NI-488.2 The National Instruments software for GPIB systems

NI-DAQ The National Instruments software for data acquisition instruments

NI-VISA The National Instruments implementation of the VISA standard; an interface-independent software that provides a unified programming interface for VXI, GPIB, and serial instruments

NI-VXI	The National Instruments bus interface software for VME/VXIbus systems
Non-Slot 0 device	A device configured for installation in any slot in a VXIbus mainframe other than Slot 0. Installing such a device into Slot 0 can damage the device, the VXIbus backplane, or both.

P

PCI	Peripheral Component Interconnect. The PCI bus is a high-performance 32-bit or 64-bit bus with multiplexed address and data lines.
PCMCIA	Personal Computer Memory Card International Association
POSC	Power On Self Configuration

R

RBD	Register-Based Device
register-based device	A Servant-only device that supports VXIbus configuration registers. Register-based devices are typically controlled by message-based devices via device-dependent register reads and writes.
Resman	The name of the National Instruments Resource Manager in NI-VXI bus interface software. <i>See</i> Resource Manager.
Resource Manager	A message-based Commander located at Logical Address 0, which provides configuration management services such as address map configuration, Commander and Servant mappings, and self-test and diagnostic management
retry	An acknowledge by a destination that signifies that the cycle did not complete and should be repeated

S

s	seconds
Servant	A device controlled by a Commander; there are message-based and register-based Servants

Shared Memory Protocol	A communication protocol that uses a block of memory accessible to both a client and a server. The memory block operates as a message buffer for communications. This is unique to register-based interfaces such as VXI.
SIMM	Single In-line Memory Module
slave	A functional part of a VME/VXIbus device that detects data transfer cycles initiated by a VMEbus master and responds to the transfers when the address specifies one of the device's registers
Slot 0 device	A device configured for installation in Slot 0 of a VXIbus mainframe. This device is unique in the VXIbus system in that it performs the VMEbus System Controller functions, including clock sourcing and arbitration for data transfers across the backplane. Installing such a device into any other slot can damage the device, the VXIbus backplane, or both.
SMB	Sub Miniature Type B connector that features a snap coupling for fast connection
T	
trigger	Either TTL or ECL lines used for intermodule communication
TTL	Transistor-Transistor Logic
U	
user window	A region of address space reserved by the VXIpc 800/700 Series for use via the NI-VXI low-level function calls. <code>MapVXIAddress()</code> uses this address space to allocate regions for use by the <code>VXIpeek()</code> and <code>VXIpoke()</code> macros.
V	
VIC	VXI Interactive Control Program, a part of the NI-VXI bus interface software. Used to program VXI devices, and develop and debug VXI application programs.

VISA	Virtual Instrument Software Architecture. This is the general name given to VISA and its associated architecture. The architecture consists of two main VISA components: the VISA Resource Manager and the VISA Instrument Control Resources.
VISAIC	VISA Interactive Control Program, a part of the NI-VISA software. Used to program devices, and develop and debug application programs
VME	Versa Module Eurocard or IEEE 1014
VMEbus System	A device configured for installation in Slot 0 of a VXIbus mainframe or ControllerSlot 1 of a VMEbus chassis. This device is unique in the VMEbus system in that it performs the VMEbus System Controller functions, including clock sourcing and arbitration for data transfers across the backplane. Installing such a device into any other slot can damage the device, the VMEbus/VXIbus backplane, or both.
VXIbus	VMEbus Extensions for Instrumentation
W	
Word Serial Protocol	The simplest required communication protocol supported by message-based devices in a VXIbus system. It utilizes the A16 communication registers to transfer data using a simple polling handshake method.
write posting	A mechanism that signifies that a device will immediately give a successful acknowledge to a write transfer and place the transfer in a local buffer. The device can then independently complete the write cycle to the destination.

Numbers

32-bit registers, accessing, B-6

A

application development, 3-1 to 3-7
configuration, 3-1 to 3-2
debugging, 3-6 to 3-7
device interaction, 3-2 to 3-3
programming with VXI, 3-3 to 3-6
 compiler symbols for NI-VXI,
 3-5 to 3-6
 example programs (table), 3-4
 VME support, 3-5
audio capability, B-8

B

BINARY_COMPATIBLE compiler symbol,
3-5 to 3-6
bulletin board support, D-1

C

CLK10 signal, B-6
CMOS, corrupted, resetting to default, B-9
common questions, B-1 to B-9
compiler symbols for NI-VXI, 3-5 to 3-6
configuration. *See* installation and configuration.
configuration utilities. *See* Resman;
T&M Explorer.
customer communication, *xi*, D-1 to C-2

D

/D or -D compiler options, 3-6
debugging applications, 3-6 to 3-7
default settings
 VXI/VME-MXI-2, A-4 to A-5
 VXIpc 800/700
 hardware settings, A-1 to A-2
 T&M Explorer settings, A-2 to A-3
developing applications. *See* application
development.
documentation
 conventions used in manual, *viii*
 flowchart for using manual, 1-1
 how to use documentation set, *ix-x*
 manual files stored in manuals directory, 1-5
 organization of manual, *vii-viii*
 related documentation, *x-xi*
drivers.txt file, 1-5 to 1-6

E

e-mail support, D-2
electronic support services, D-1 to C-2

F

FAILED LED, B-6
fax and telephone support numbers, D-2
Fax-On-Demand support, D-2
files and directories installed on your hard drive,
1-5 to 1-6
FTP support, D-1

H

- hard drives, questions about, B-9
- hardware
 - booting from external SCSI hard drive, B-9
 - configuring, 2-1
 - default settings for VXIpc 800/700, A-1 to A-2
 - description, 1-2
 - installing, 2-2
 - troubleshooting problems, B-6 to B-8
 - upgrading VXIpc 800/700 Series, B-8

I

- images directory, 1-5
- installation and configuration, 2-1 to 2-4
 - booting your system for first time, 2-3
 - checking configuration of memory and drives, B-8
 - files and directories installed on your hard drive, 1-5 to 1-6
 - hardware configuration, 2-1
 - hardware installation, 2-2
 - configuring more than one device as System Controller (caution), 2-2
 - electrostatic discharge (caution), 2-2
 - installing VXIpc 800/700 in slot other than Slot 0, B-8
 - reinstalling NI-VXI/VISA software, C-1 to C-4
 - completing installation, C-4
 - installation procedure, C-2 to C-3
 - preparing for installation, C-1
 - removing previous version, C-2
 - running T&M Explorer, 2-3

- software
 - LabVIEW or LabWindows/CVI configuration (caution), 2-3
 - pre-installed software, 2-3
 - verifying system configuration, 2-4

interrupt levels, B-8

K

keyboard connector problems, B-7

L

- LabVIEW software
 - configuring (caution), 2-3
 - overview, 1-4
- LabWindows/CVI software
 - configuring (caution), 2-3
 - overview, 1-4
- LEDs on front of VXIpc 800/700, B-6
- logical address 0, default configuration for VXIpc 800/700, 2-2

M

- manual. *See* documentation.
- memory, adding, B-8
- MXI-2 interface kit. *See* VXIpc 800/700 Series.

N

- NI-488.2 software kit, 1-3
- NI Spy utility
 - debugging applications, 3-6 to 3-7
 - overview, 1-3

NI-VXI/VISA software. *See also* application development.

- compiler symbols for NI-VXI, 3-5 to 3-6 configurations, 1-4
- determining which version is installed, B-4
- example programs (table), 3-4
- NI-VISA for Windows 95/NT, 1-4
- NI-VXI for Windows 95/NT, 1-4
- overview, 1-2 to 1-3
- programming with, 3-3 to 3-4
- reinstalling, C-1 to C-4

P

programming. *See* application development.

R

RAM, adding, B-8

reinstalling NI-VXI/VISA software, C-1 to C-4

- completing installation, C-4
- installation procedure, C-2 to C-3
- preparing for installation, C-1
- removing previous version, C-2

requirements for getting started, 1-1 to 1-2

Resman

- performing startup Resource Manager operations, B-5
- running, B-3
- running after power cycling, 2-3, 3-1
- running through T&M Explorer, 3-2
- testing your system, B-5
- when to use, B-3

Resource Manager. *See* Resman.

S

SCSI hard drive, questions about, B-9

settings. *See* default settings.

setup. *See* installation and configuration.

software configurations

- NI-VISA for Windows 95/NT, 1-4
- NI-VXI for Windows 95, 1-4
- NI-VXI for Windows NT, 1-4

software description

- National Instruments application software, 1-4 to 1-5
- NI-VXI/VISA bus interface software, 1-2 to 1-3

software installation

- NI-VXI/VISA software pre-installed, 2-3
- prompt for configuring LabVIEW or LabWindows/CVI (caution), 2-3
- reinstalling NI-VXI/VISA software, C-1 to C-4

speakers, connecting, B-8

startup Resource Manager operations, B-5

SYSFAIL LED, B-6

System Controller, configuring more than one (caution), 2-2

system requirements, 1-1 to 1-2

T

technical support, D-1 to C-2

telephone and fax support numbers, D-2

T&M Explorer

- changing configuration settings, 2-1
- configuring components, 3-1 to 3-2
- Connection View, 3-3
- default settings
 - VXI/VME-MXI-2, A-4 to A-5
 - VXIpc 800/700, A-2 to A-3
- online help, 3-2
- overview, 1-3
- running after initial configuration, 2-3

- running Resman, 3-2
- settings for low-level functions and memory sharing (note), 3-4
- System View, 3-2

U

- utilities. *See also* Resman; T&M Explorer.
 - questions about, B-1 to B-5

V

- VIC utility, 3-2, 3-7
- video problems, troubleshooting, B-6 to B-7
- VISAconf utility, B-2
- VISAIC utility, 3-2, 3-3, 3-7
- VME devices, accessing, 3-5, B-4
- VXI programming. *See* application development.
- VXI/VME-MXI-2, T&M Explorer settings, A-4 to A-5
- VXIedit utility, B-2

- vxiin command, 3-3
- VXIinit utility, B-2
- vxiinreg command, 3-3
- vxiout command, 3-3
- VXIpc 800/700 Series
 - common questions, B-1 to B-9
 - determining serial number and hardware revision, B-4
 - hardware description, 1-2
 - hardware settings, A-1 to A-2
 - installation, 2-2
 - LEDs on front panel, B-6
 - requirements for getting started, 1-1 to 1-2
 - software description, 1-2 to 1-5
 - National Instruments application software, 1-4 to 1-5
 - software configurations, 1-4
 - T&M Explorer settings, A-2 to A-3
 - upgrading, B-8 to B-9
- VXIplug&play specifications, 1-2, 3-3